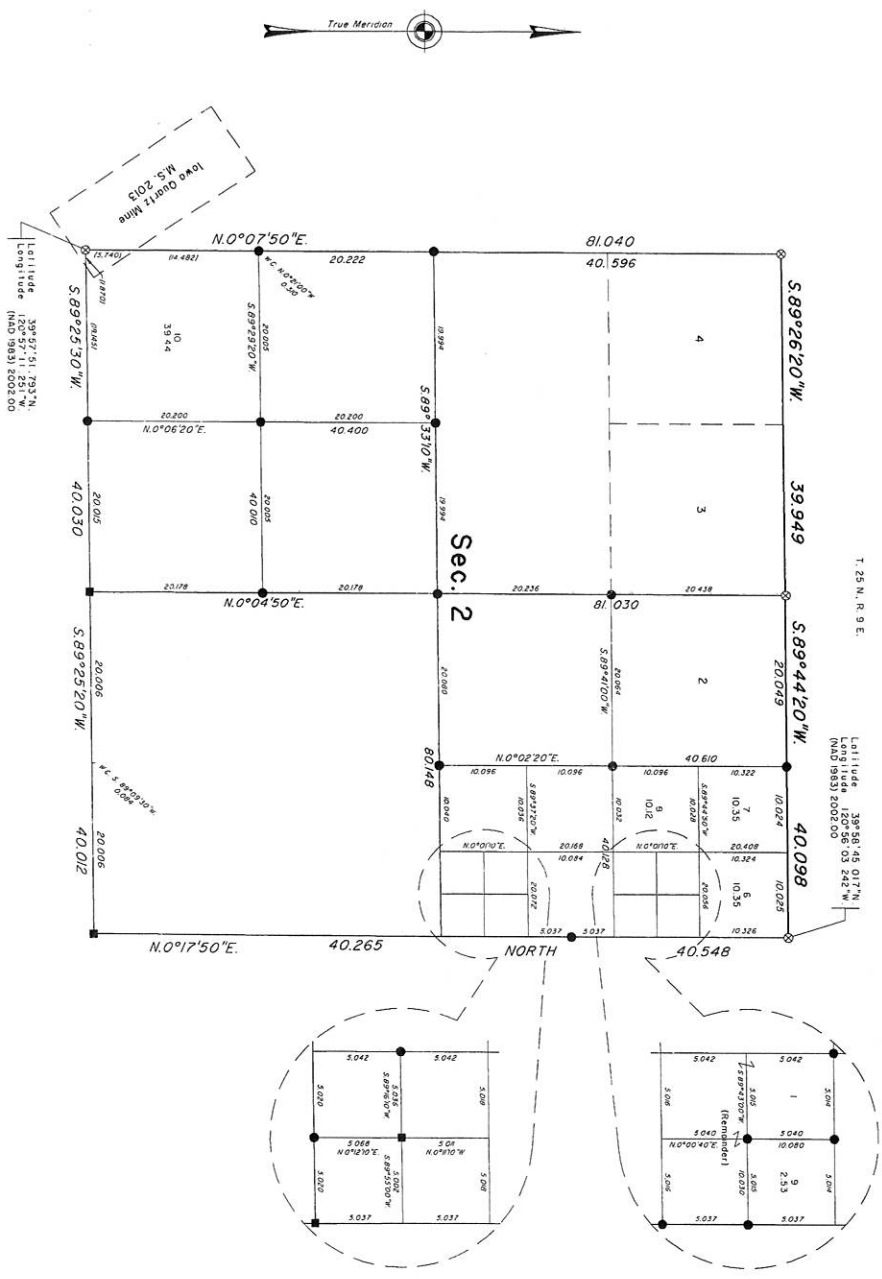


CR414

# TOWNSHIP 24 NORTH, RANGE 9 EAST, OF THE MOUNT DIABLO MERIDIAN, CALIFORNIA. DEPENDENT RESURVEY AND SUBDIVISION OF SECTION 2

ORIGINAL



A history of surveys is contained in the field notes.

This plat represents the dependent resurvey of a portion of the north boundary and a portion of the subdivisional lines, designed to restore the corners in their true original locations according to the best available evidence, and the subdivision of section 2, Township 24 North, Range 9 East, Mount Diablo Meridian, California.

Except as depicted hereon, latings and areas are as shown on the official plat approved March 22, 1981, and the supplemental plat approved January 12, 1912.

Surveys were executed by John P. Schmidt, U.S. Forest Service Land Surveyor, beginning August 29, 1989, and completed May 12, 2011 by Brian L. Mikkelson, Cadastral Surveyor, pursuant to Special Instructions dated September 12, 1986, for Group No. 1031, California.

UNITED STATES DEPARTMENT OF THE INTERIOR  
BUREAU OF LAND MANAGEMENT  
Sacramento, California

*John P. Schmidt*  
For the Director  
Chief Cadastral Surveyor—California

CA210240N0090E0050508

T. 24 N., R. 9 E., M.D.M.



u . \*

# Memo

## U.S. Department of Interior, Bureau of Land Management, California State Office

From: Branch of Geographic Services, Survey Records (CA-942)  
Date: 1/27/2015  
Re: Dependent Resurvey and Subdivision of Section 2 for T. 24 N., R. 9 E., Mount Diablo Meridian, California

Comments: Transmitted herewith, for your reference, is a copy of the official dependent resurvey and subdivision of section 2 for Township 24 North, Range 9 East, Mount Diablo Meridian, California, accepted January 27, 2015. This survey will be officially filed in the Branch of Geographic Services, Survey Records, thirty (30) calendar days from the date of publication in the Federal Register, by the Office of the Federal Register, National Archives and Records Administration.  
<http://www.gpoaccess.gov/fr/>

Federal Register publication: to be determined. Official filing date: 30 days after publication.

This survey was prepared to meet certain administrative needs of the U.S. Forest Service, Plumas National Forest.

For additional information Contact, Survey Records, 916-978-4330  
Email, [casurveyrecords@blm.gov](mailto:casurveyrecords@blm.gov)

---

*Cd w/ Survey notes + plats on file*



100

100