

CORNER RECORD

Document Number 416

NE 1/4 of Sec. 16, T.22N., R.13E. MDM

County of Plumas, California

Brief Legal Description: Merged Lots 459, 460, and 461, Gold Mountain, Unit 17, 9 M 9

	X
Sec. 16	

CORNER TYPE

Government Corner  Control   
 Meander  Property   
 Rancho  Other   
 Date of Survey 01/21/2015

COORDINATES (Optional)

N. \_\_\_\_\_  
 E. \_\_\_\_\_  
 Zone \_\_\_\_\_ Datum \_\_\_\_\_  
 Elev. \_\_\_\_\_

Corner— Left as found  Found and tagged  Established  Reestablished  Rebuilt

Identification and type of corner found: Evidence used to identify or procedure used to establish or reestablish the corner:  
Found 5/8" Rebar with Aluminum or Plastic Caps per 8 M 33 in good condition

as indicated on the attached sketch. No Record Unit 17 Monuments were Found.

Lot 459, 460, and 461 had been mass graded for a new hotel prior to this Survey.

A description of the physical condition of the monument as found and as set or reset: \_\_\_\_\_

Set 1/2" Rebar with Aluminum Cap stamped LS 8463 at Merged Lot Corners as indicated on attached sketch. Corners were set in Record position as shown on 9 M 9 using Found Corners per 8 M 33 and Found 60-D Spikes.

SURVEYOR'S STATEMENT

This Corner Record was prepared by me or under my direction in conformance with the Land Surveyors' Act on March 30, 2015.

Signed Steven A. Alfred L.S. 8463  
 Steven A. Alfred



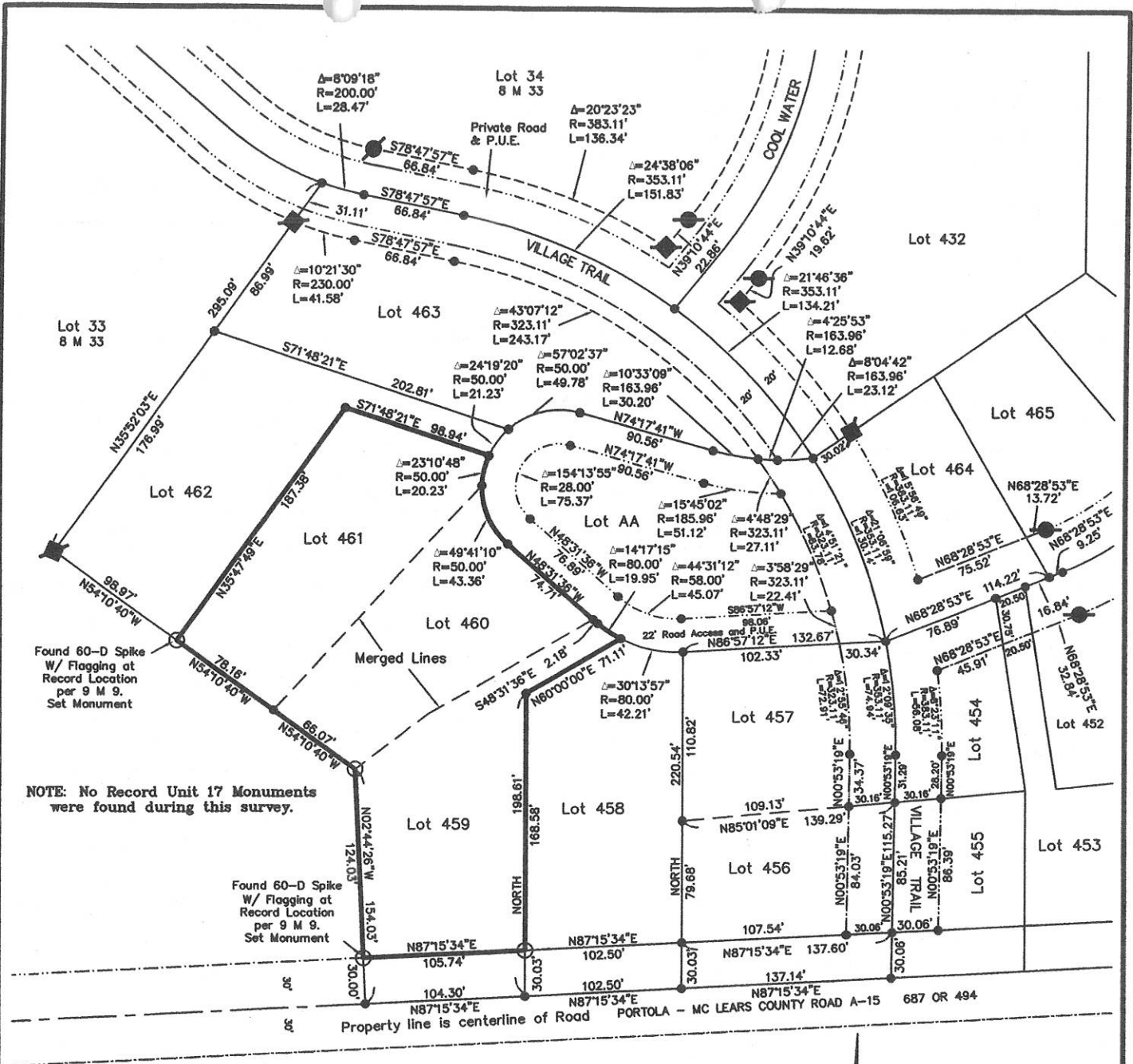
5/9/15

COUNTY SURVEYOR'S STATEMENT

This Corner Record was received May 14 2015 and examined and filed May 21 2015.

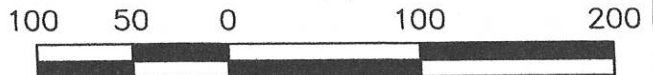
Signed R. Tom Hunter Title County Surveyor

County Surveyor's Comment \_\_\_\_\_



**LEGEND**

- Found Aluminum Cap LS 2843 per Unit 2, 8 M 33
- Found Plastic Cap LS 2843 per Unit 2, 8 M 33
- SET 1/2" Rebar with Aluminum Cap LS 8463
- Nothing Found or Set - Dimension Point
- 10' Snowstorage, Landscape & P.U.E. easement
- - - Road & P.U.E. easement



1" = 100'

Steven A. Alfred LS 8463  
PROFESSIONAL LAND SURVEYOR

P.O. Box 916  
Loyalton, CA 96118  
(530) 826-4587

15003