

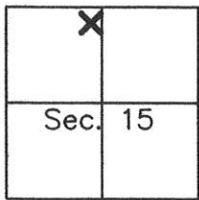
CORNER RECORD

Document Number 417

N 1/2 of Sec. 15, T.22N., R.13E. MDM

County of Plumas, California

Brief Legal Description: Revised Lot 130, LLA 747 OR 099, Gold Mountain, Unit 6,



CORNER TYPE

Government Corner  Control   
 Meander  Property   
 Rancho  Other   
 Date of Survey 05/18/2015

COORDINATES (Optional)

N. \_\_\_\_\_  
 E. \_\_\_\_\_  
 Zone \_\_\_\_\_ Datum \_\_\_\_\_  
 Elev. \_\_\_\_\_

Corner- Left as found  Found and tagged  Established  Reestablished  Rebuilt

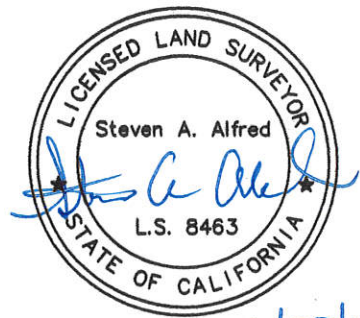
Identification and type of corner found: Evidence used to identify or procedure used to establish or reestablish the corner:  
Found 5/8" Rebar with Aluminum or Plastic Caps per 8 M 74 in good condition  
as indicated on the attached sketch. Set mounuments in positions shown on 11 RS 109.  
Monuments shown as removed per 11 RS 109 were found in record position per 8 M 74  
as shown attached sketch.

A description of the physical condition of the monument as found and as set or reset: \_\_\_\_\_  
Set 1/2" Rebar with Aluminum Cap stamped LS 8463 on North Line of Revised Lot 130,  
as indicated on attached sketch, in the positions shown per 11 RS 109. Corners shown  
as removed per 11 RS 109 but found during this survey were left in place.

SURVEYOR'S STATEMENT

This Corner Record was prepared by me or under my direction in conformance with the Land Surveyors' Act on May 30, 2015.

Signed Steven A. Alfred L.S. 8463  
Steven A. Alfred



6/23/15

COUNTY SURVEYOR'S STATEMENT

This Corner Record was received July 2nd 2015 and examined and filed July 7th 2015.

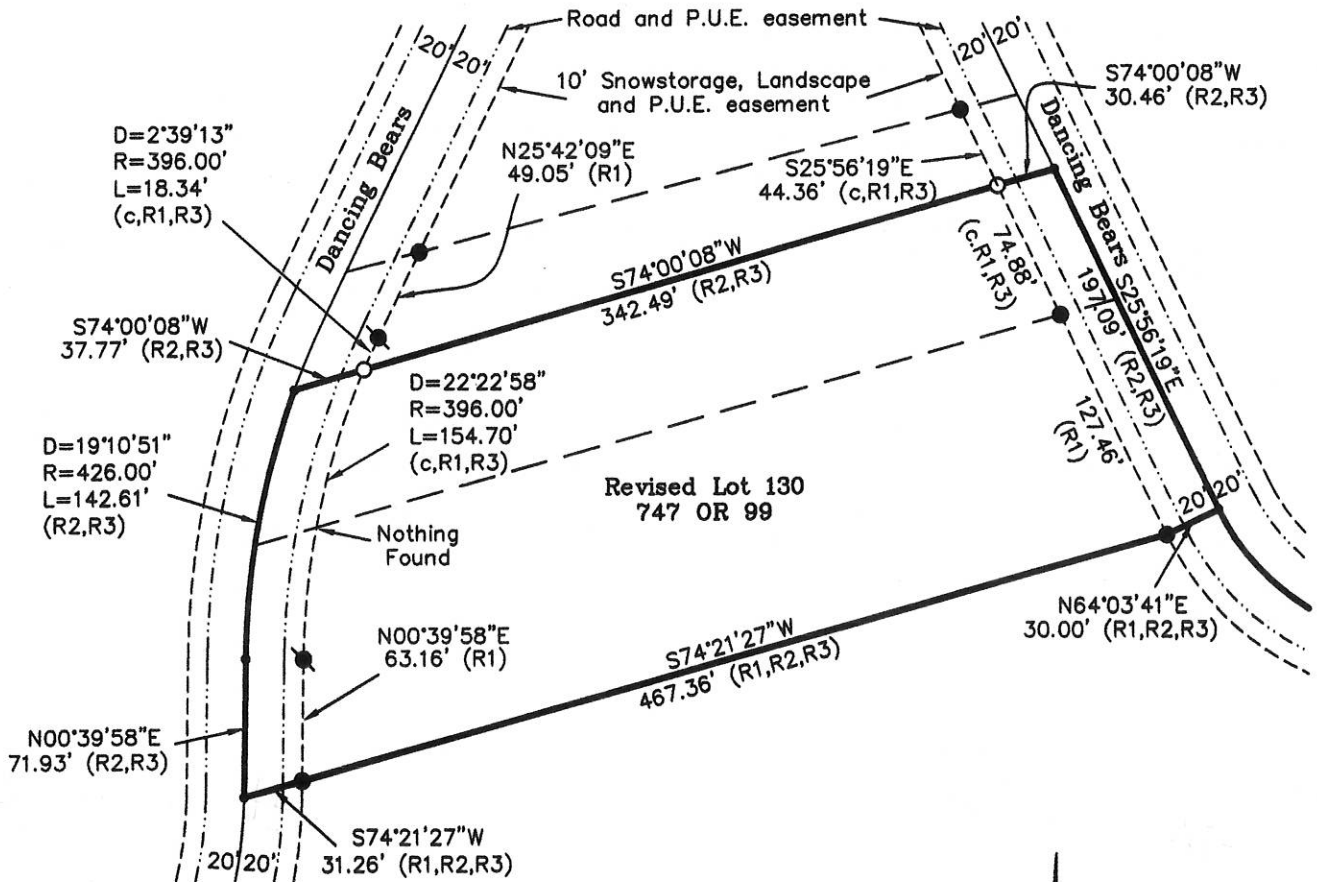
Signed R. Tom Shuster Title County Surveyor

County Surveyor's Comment \_\_\_\_\_

\_\_\_\_\_  
\_\_\_\_\_  
\_\_\_\_\_

### LEGEND

- FOUND 5/8" Rebar with Aluminum Cap LS 2843 per 8 M 74
  - FOUND 5/8" Rebar with Plastic Cap LS 2843 per 8 M 74
  - SET 1/2" Rebar & Aluminum Cap LS 8463
  - Nothing Found or Set - Dimension Point
- (R1) RECORD per 8 M 74  
 (R2) RECORD per 11 RS 109  
 (R3) RECORD per LLA 747 OR 99  
 (c) Calculated per Records Indicated



Surveyor's Note: Bearings and Distances shown are Record And Measured per Reference Indicated

Steven A. Alfred LS 8463  
 PROFESSIONAL LAND SURVEYOR

P.O. Box 916  
 Loyalton, CA 96118  
 (530) 826-4587

