

CORNER RECORD

Document Number 419

Nearest Town Quincy
County of Plumas California

Reset and recover the monuments that define the boundary of the property described in book 495 of Official Records, Page 640 as shown on the included sketch. Said monuments are shown in Book 11 of Parcel Maps, Page 141 and Book 5 of Subdivision Maps, Page 77.

CORNER TYPE

Property corners and line points

Date of Survey April 14, 2016

Corner Left as found Found and tagged Established Reset after construction
Reestablished Rebuilt

Identification and type of corner found: Evidence used to identify or procedure used to establish or reestablish the corners:

See Sketch – Page 2

A description of the physical condition of the monuments as found and as set or reset:

See Sketch – Page 2

SURVEYOR'S STATEMENT

THIS CORNER RECORD WAS PREPARED BY ME OR UNDER MY DIRECTION IN CONFORMANCE WITH THE LAND SURVEYORS' ACT ON April 14, 2016.

Signed Gerald Joseph Tibbedeaux P.L.S. 6051
Gerald Joseph Tibbedeaux



COUNTY SURVEYOR'S STATEMENT

THIS CORNER RECORD WAS RECEIVED April 20, 2016
AND EXAMINED AND FILED April 27, 2016

Signed R. Tom Hunter R.C.E. 30515
R. Tom Hunter, Plumas County Surveyor
License Expires 03/31/16



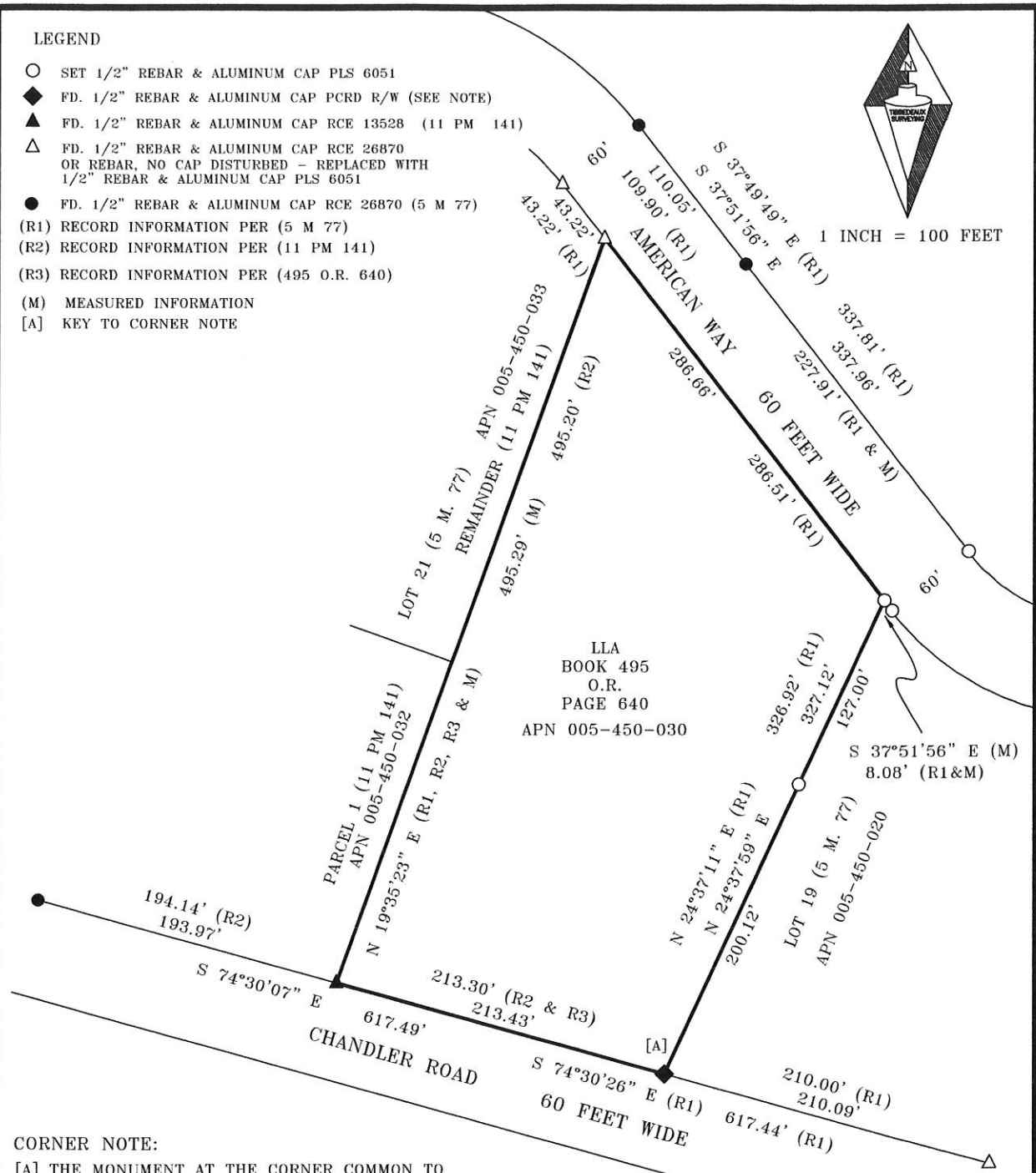
County Surveyor's Comment

LEGEND

- SET 1/2" REBAR & ALUMINUM CAP PLS 6051
- ◆ FD. 1/2" REBAR & ALUMINUM CAP PCRD R/W (SEE NOTE)
- ▲ FD. 1/2" REBAR & ALUMINUM CAP RCE 13528 (11 PM 141)
- △ FD. 1/2" REBAR & ALUMINUM CAP RCE 26870 OR REBAR, NO CAP DISTURBED - REPLACED WITH 1/2" REBAR & ALUMINUM CAP PLS 6051
- FD. 1/2" REBAR & ALUMINUM CAP RCE 26870 (5 M 77)
- (R1) RECORD INFORMATION PER (5 M 77)
- (R2) RECORD INFORMATION PER (11 PM 141)
- (R3) RECORD INFORMATION PER (495 O.R. 640)
- (M) MEASURED INFORMATION
- [A] KEY TO CORNER NOTE



1 INCH = 100 FEET



CORNER NOTE:

[A] THE MONUMENT AT THE CORNER COMMON TO LOT 31, 19 AND THE NORTHERLY SIDELINE OF CHANDLER ROAD IS SHOWN AS A REBAR & CAP RCE 26870. THE MONUMENT RECOVERED ON THIS SURVEY HAS A PCRD R/W CAP, IT IS ACCEPTED AS THE COMMON CORNER CALLED FOR, (5 M 77).

SKETCH OF MONUMENT REPLACEMENT FOR PETER H. HOCHREIN

PROPERTY DESCRIBED, BOOK 495 O.R. PAGE 640
BOOK 5 OF SUBDIVISION MAPS, PAGE 77
BOOK 11 OF PARCEL MAPS, PAGE 141
WITHIN SECTION 7, T.24N., R.10E., M.D.M

PLUMAS COUNTY, CALIFORNIA
SCALE 1 INCH = 100 FEET APRIL 14, 2016

Tibbdeaux Surveying
P.O. Box 1960
Portola, CA 96122
(530) 832-5772
#2016-07