

# CORNER RECORD

Document Number 422

Nearest Town Portola  
County of Plumas California

Set East Lot corner common to Lot 85 and 84, of Welch Estates Unit No. 1, book 2 of Subdivision Maps, Page 11, Plumas County Records.

---

## CORNER TYPE

Property corner

Date of Survey July 28, 2016

Corner Left as found  Found and tagged  Established  Reset after construction   
Reestablished  Rebuilt

---

Identification and type of corner found: Evidence used to identify or procedure used to establish or reestablish the corner:

See Sketch – Page 2

A description of the physical condition of the monument as found and as set or reset:

See Sketch – Page 2

### SURVEYOR'S STATEMENT

THIS CORNER RECORD WAS PREPARED BY ME OR UNDER MY DIRECTION IN CONFORMANCE WITH THE PROFESSIONAL LAND SURVEYORS' ACT ON July 28, 2016

Signed Gerald Joseph Tibbedeaux P.L.S. 6051  
Gerald Joseph Tibbedeaux



### COUNTY SURVEYOR'S STATEMENT

THIS CORNER RECORD WAS RECEIVED 8-1-2016  
AND EXAMINED AND FILED 9/9/16

Signed R. Tom Hunter R.C.E. 30515  
R. Tom Hunter, Plumas County Surveyor  
License Expires 03/31/2018

County Surveyor's Comment

---

---

---

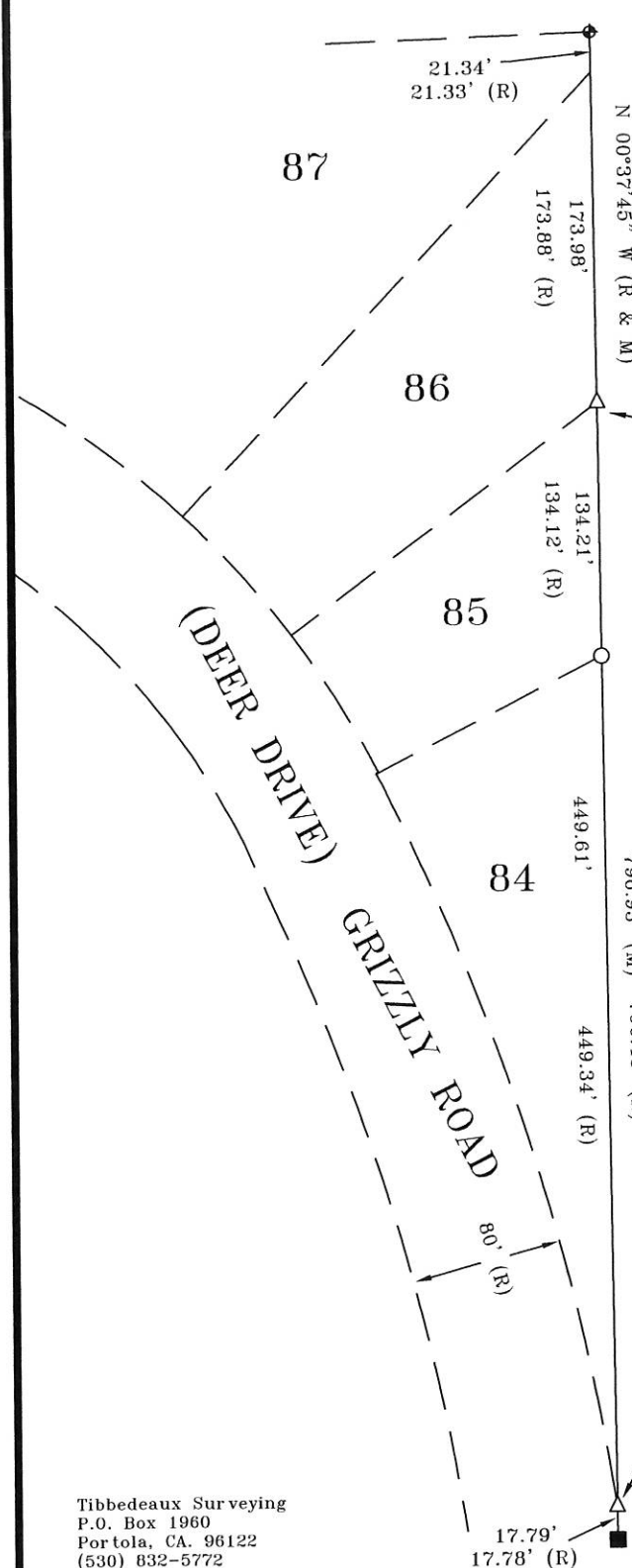
---



SCALE 1 INCH = 100 FEET

**BASIS OF BEARINGS:**

THE EAST LINE OF WELCH ESTATES UNIT No. 1 BOOK 2 OF SUBDIVISION MAPS, PAGE 11, SHOWN AS N 0°37'45"W, IS THE BASIS OF BEARINGS SHOWN ON THIS SKETCH.



FD. 1/2" IRON PIPE  
OPEN S 78°12'59" W, 0.63'

**LEGEND:**

- △ POSITION OF PROPERTY CORNER, NOTE: 1/2" IRON PIPE (OPEN) WERE FOUND AS INDICATED, BECAUSE THEY WERE INCONSISTENT THEY WERE NOT USED TO ESTABLISH THE MONUMENT FOR LOTS 84/85. THEY ARE SHOWN FOR INFORMATION ONLY.
- SET 1/2" REBAR AND ALUMINUM CAP PLS 6051
- FOUND 1 1/4" IRON PIPE & PLUG SET TAG PLS 6051 (R)
- ◆ FOUND BRASS CAP IN CONCRETE IN PIPE STAMPED C-C, E 1/16, S 8, 1959 (R)
- (R) RECORD INFORMATION PER BOOK 2 OF SUBDIVISION MAPS, PAGE 11, WELCH ESTATES UNIT No. 1

FD. 1/2" IRON PIPE  
OPEN, N 69°24'39" E, 0.30'

SKETCH OF MONUMENT REPLACEMENT  
FOR  
BILL HANNEMAN  
THE EAST LOT CORNER COMMON TO LOTS 85 & 84  
WELCH ESTATES UNIT No.1  
BOOK 2 OF SUBDIVISION MAPS, PAGE 11  
WITHIN SECTION 8, T. 23N., R. 14E., M.D.M.  
PLUMAS COUNTY CALIFORNIA  
SCALE 1 INCH = 100 FEET  
JULY 28, 2016

Tibbeteaux Surveying  
P.O. Box 1960  
Portola, CA. 96122  
(530) 832-5772  
2016-14