

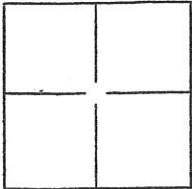
# CORNER RECORD

Document Number 423

City of QUINCY

County of PLUMAS, California

Brief Legal Description BEGINNING AT POINT ON THE NORTH SIDE OF LAWRENCE STREET WHICH BEARS S88° EAST A DISTANCE OF 254.5 FEET FROM THE NORTHEAST CORNER CORNER TYPE OF CRESCENT AND COORDINATES(Optional) LAWRENCE ST.



Government Corner  Control   
Meander  Property   
Rancho  Other   
Date of Survey Dec 16, 2016

N. \_\_\_\_\_  
E. \_\_\_\_\_  
Zone \_\_\_\_\_ NAD27  NAD83   
NAD83 Epoch \_\_\_\_\_  
Elevation \_\_\_\_\_  
Vert. Datum: NGVD29  NAV88   
Meas. Units: Metric  Imperial

Corner - Left as found  Found and tagged  Established  Reestablished  Rebuilt

Identification and type of corner found: Evidence used to identify or procedure used to establish or reestablish the corner:

SEE MAP ON OTHER SIDE

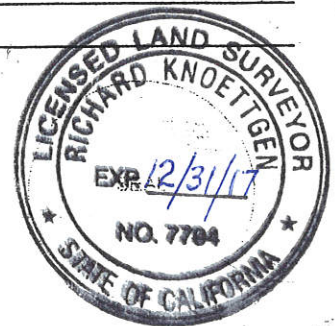
A description of the physical condition of the monument as found and as set or reset:

SEE MAP ON OTHER SIDE

### SURVEYOR'S STATEMENT

This Corner Record was prepared by me or under my direction in conformance with the Land Surveyor's Act on JANUARY 5, 2017.

Signed Richard Knoettgen (P.L.S.) or R.C.E. Number L7794



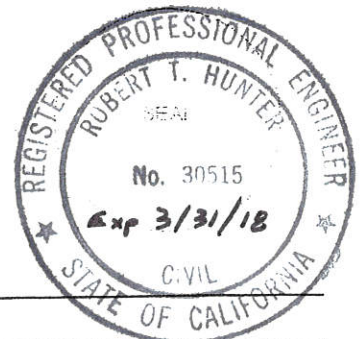
### COUNTY SURVEYOR'S STATEMENT

This Corner Record was received Jan. 5, 2017 and examined and filed Jan. 24, 2017.

Signed R Tom Hunter P.L.S. or R.C.E. Number RCE 30515

Title County Surveyor

County Surveyor's Comment \_\_\_\_\_

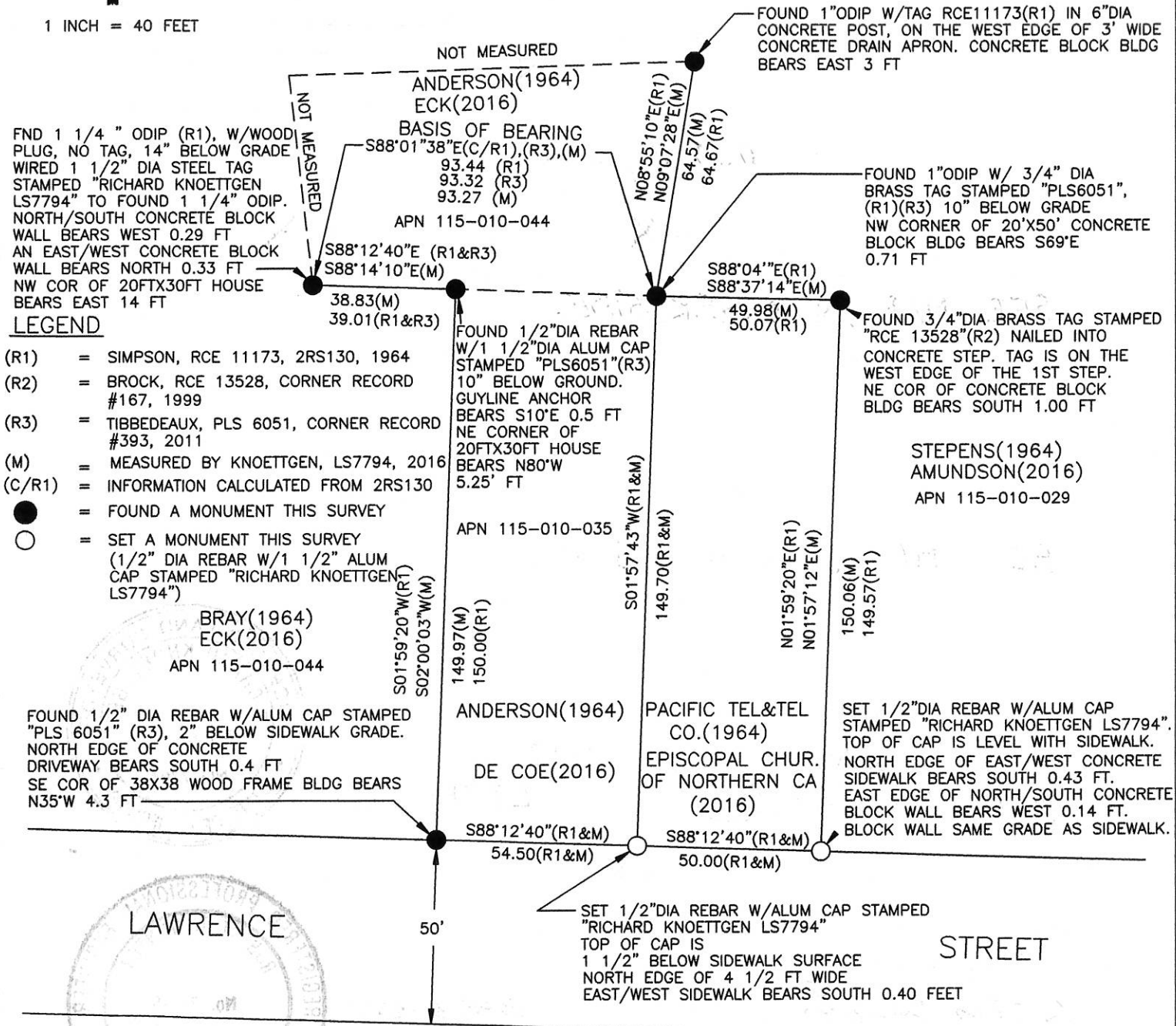




**BASIS OF BEARING**

THE BEARING OF S88°01'38"E FROM INFORMATION SHOWN IN BOOK 2 OF RECORDS OF SURVEY AT PAGE 130, BETWEEN THE RECOVERED MONUMENTS SHOWN HEREON.

1 INCH = 40 FEET



A PARTIAL RETRACEMENT OF 2RS130  
A PARTIAL RETRACEMENT OF CORNER RECORD #197  
A FULL RETRACEMENT OF CORNER RECORD #393

FOR  
EPISCOPAL CHURCH OF NORTHERN CALIFORNIA  
REPLACE MISSING MONUMENTS AT THE SW CORNER  
AND SE CORNER OF CHURCH PROPERTY  
ON LAWRENCE STREET  
JANUARY 5, 2017

RICHARD KNOETTGEN  
PO BOX 312  
QUINCY, CA 95971  
530-283-4418