

CORNER RECORD

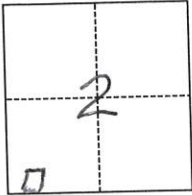
Agency Index 426
Document Number N/A

City of QUINCY GREENVILLE County of PLUMAS, California
Brief Legal Description APN 110-220-040 351 CEDAR DR. GREENVILLE, CA

T26N R9E

CORNER TYPE

COORDINATES (Optional)



- Government Corner
- Meander
- Rancho
- Control
- Property
- Other

N. _____ E. _____
 Elevation _____
 Units Metric U.S. Survey Foot
 Horizontal Datum _____
 Zone _____ Epoch Date _____
 Vertical Datum _____
 Complies with Public Resources Code §§8801-8819
 Complies with Public Resources Code §§8890-8902

Date of Survey 3/19/18

SW 1/4, SW 1/4 SEC. 2

- PLS Act Ref.: 8765(d) 8771 8773 Other:
- Corner/Monument: Left as found Established Rebuilt Pre-Construction
 Found and tagged Reestablished Referenced Post-Construction

Narrative of corner identified and monument as found, set, reset, replaced, or removed:
 See sheet #2 for description(s):

REPLACED LOST CORNER OF RECORD
PER BPM 81 (SEE SHEET # 2 OVER)

SURVEYOR'S STATEMENT

This Corner Record was prepared by me or under my direction in conformance with
the Professional Land Surveyors' Act on APRIL 7, 2018

Signed John P. Schmidt P.L.S. or R.C.E. No. P.L.S. 6569



EXP. 9/30/19

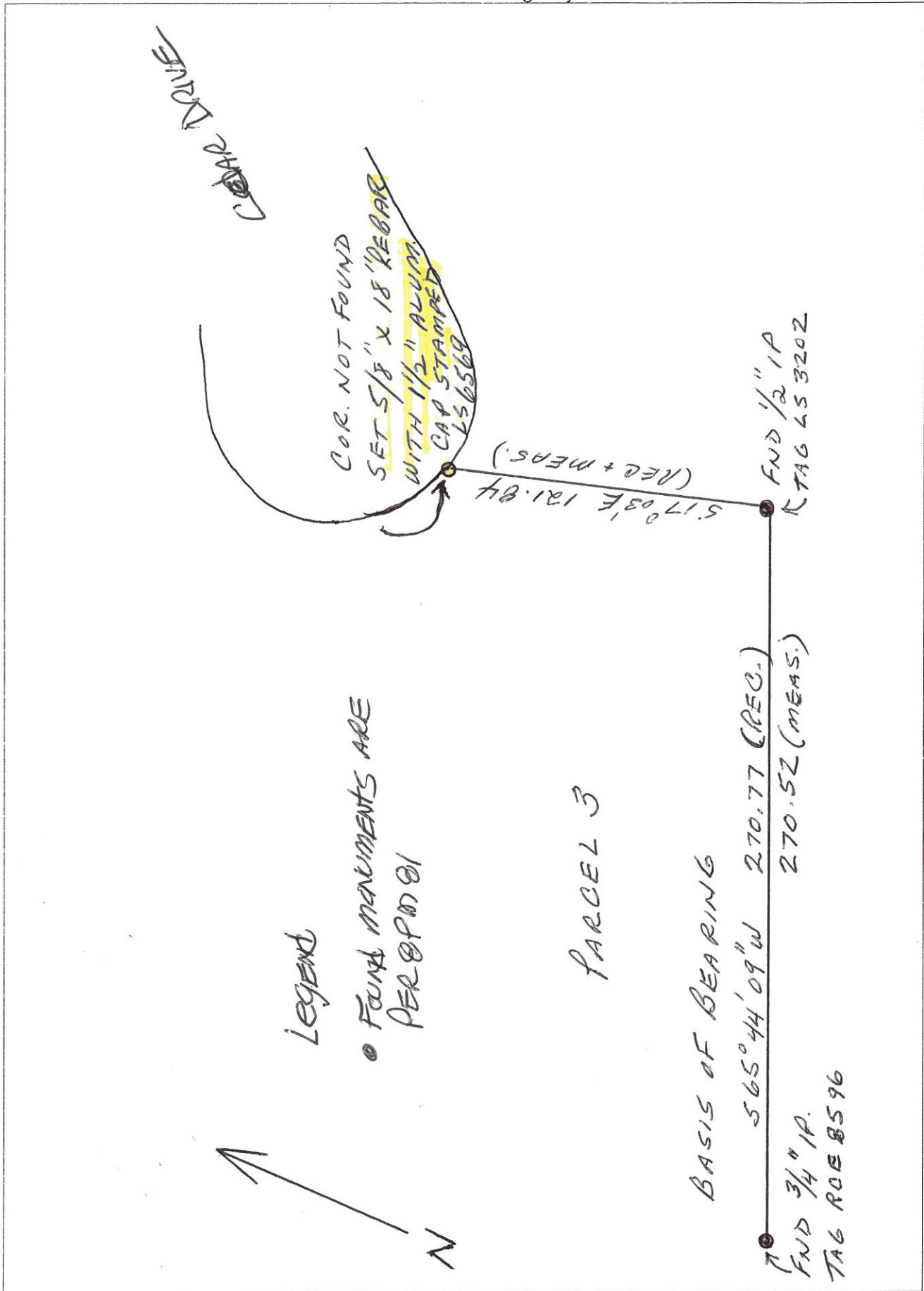
COUNTY SURVEYOR'S STATEMENT

This Corner Record was received April 9 2018
and examined and filed April 30, 2018

Signed R Tom Skute P.L.S. or R.C.E. No. 30515
Title County Surveyor

County Surveyor's Comment





8 PM 81