

CORNER RECORD

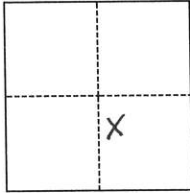
Agency Index 428
 Document Number

City of Greenville County of Plumas, California
 Brief Legal Description 5516 Diamond Mtn. Rd. A.P.N.:004-250-007

Parcel 15 2 MAPS 64

CORNER TYPE

COORDINATES (Optional)



- Government Corner
- Meander
- Rancho
- Control
- Property
- Other

N. E.
 Elevation
 Units Metric U.S. Survey Foot
 Horizontal Datum
 Zone Epoch Date
 Vertical Datum
 Complies with Public Resources Code §§8801-8819
 Complies with Public Resources Code §§8890-8902

Date of Survey June 27, 2018

T 27 N, R 11 E Sec. 31

- PLS Act Ref.: 8765(d) 8771 8773 Other:
- Corner/Monument: Left as found Established Rebuilt Pre-Construction
 Found and tagged Reestablished Referenced Post-Construction

Narrative of corner identified and monument as found, set, reset, replaced, or removed:
 See sheet #2 for description(s):

NW corner of Parcel # 15 Carrol Acres Subdivision as shown on 2M64. Found rusted out 1" iron pipe 12.8ft. out or record position for this corner. Travis Mitchell, the landowner of Parcel # 14 said he found the pipe laying on the ground and so he placed it in the position where he thought it should go. I discarded the the old I.P. and replaced it with a 24"x5/8" rebar with a 1/1/2" aluminum cap stamped LS 6569, set 14" in the ground.

SURVEYOR'S STATEMENT

This Corner Record was prepared by me or under my direction in conformance with
 the Professional Land Surveyors' Act on June 27, 2018
 Signed John P. Schmidt P.L.S. or R.C.E. No. PLS-6569



EXP. 9-30-19

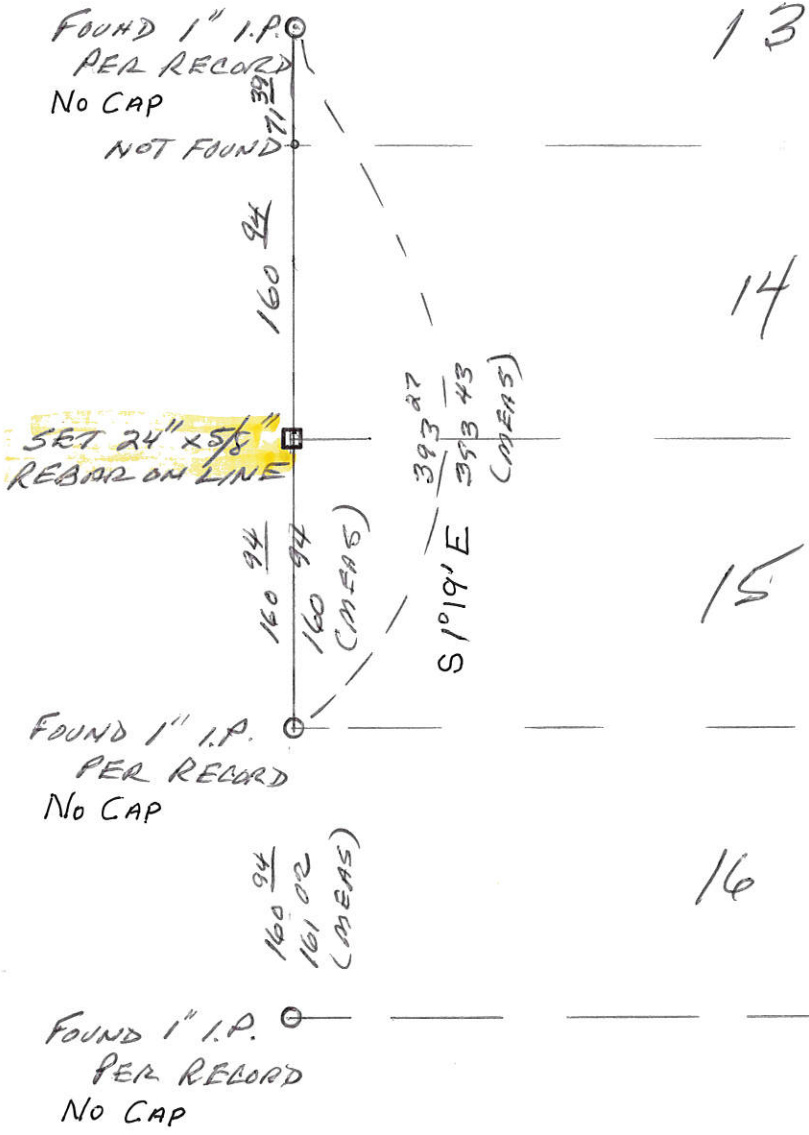
COUNTY SURVEYOR'S STATEMENT

This Corner Record was received June 28, 2018
 and examined and filed AUG. 15, 2018
 Signed R. Tom Hunter P.L.S. or R.C.E. No. 30515
 Title Plumas County Surveyor



County Surveyor's Comment

this "Corner Record" shows material discrepancies between the monuments found and a Record of Survey should be performed to show his interpretation as to where this corner should be located.



CARROLL ACRES SUBDIVISION
UNIT NO. 1
2 M 64