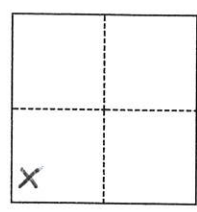


# CORNER RECORD

Agency Index 429  
Document Number           

City of BUCKS LAKE County of PLUMAS, California  
Brief Legal Description 50 HASKINS CIRCLE A.P.N. 112-200-007  
Parcel 1 per G.MAPS 1+2



- CORNER TYPE**
- Government Corner
  - Meander
  - Rancho
  - Control
  - Property
  - Other

**COORDINATES (Optional)**

N.            E.             
Elevation             
Units  Metric  U.S. Survey Foot  
Horizontal Datum             
Zone            Epoch Date           

Date of Survey JUNE 26, 2018

- Complies with Public Resources Code §§8801-8819
- Complies with Public Resources Code §§8890-8902

T23N, R7E SEC. 2

- PLS Act Ref.:  8765(d)  8771  8773  Other:
- Corner/Monument:  Left as found  Established  Rebuilt  Pre-Construction  
 Found and tagged  Reestablished  Referenced  Post-Construction

Narrative of corner identified and monument as found, set, reset, replaced, or removed:  
 See sheet #2 for description(s):



### SURVEYOR'S STATEMENT

This Corner Record was prepared by me or under my direction in conformance with the Professional Land Surveyors' Act on July 30, 2018.  
Signed Robert P. Schmidt P.L.S. or R.C.E. No. P.L.S. 6569

### COUNTY SURVEYOR'S STATEMENT

EXP. 9-30-19

This Corner Record was received July 30 2018  
and examined and filed             
Signed R Tom Shute P.L.S. or (R.C.E) No. 30515  
Title County Surveyor  
County Surveyor's Comment           

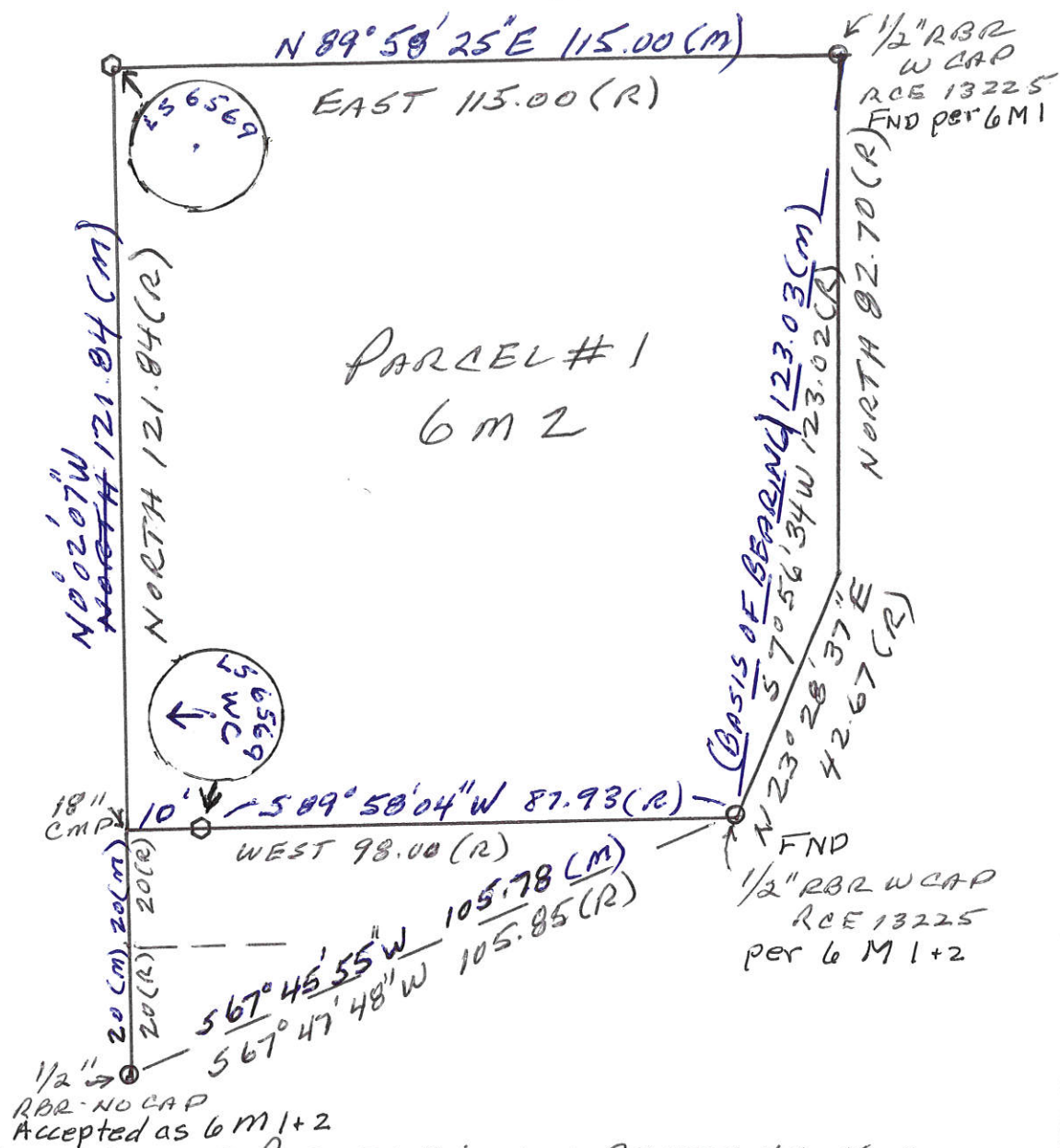


NOT TO SCALE



SET MONUMENTS ARE A 1 1/2" STAMPED ALUM. CAP ON A 24" x 5/8" REBAR ROD. WITNESS CORNER (WC) STAMPED AS SHOWN.

BUCKS LAKE RD.



PARCEL #1  
6 M 2

THE MISSING NW CORNER OF PARCEL #1 WAS RESET USING A RECORD DISTANCE-DISTANCE INTERSECTION FROM THE FOUND NE CORNER OF PARCEL #1 (115.00 FT.) AND THE MOST SOUTHERLY FOUND CORNER OF RECORD HERE SHOWN LOCATED NEAR THE EASTERLY SIDE OF BUCKS LAKE RD. (161.84 FT.) THE MISSING SW CORNER POSITION OF PARCEL #1 WAS DETERMINED BY MEASURING N 0°02'07" W, 40.00 FT ON LINE WITH THE RESET NW CORNER OF PARCEL #1. BECAUSE THIS CORNER POSITION FALLS IN AN UNSTABLE DITCH AREA NEAR THE OUTLET OF AN 18" CMP, I SET A WITNESS CORNER 10 FT AWAY FROM SAID POSITION AND ON LINE WITH THE SE CORNER OF PARCEL #1.