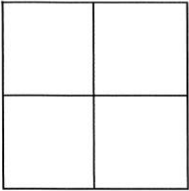


CORNER RECORD

Agency Index 433
 Document Number _____

City of near Whitehawk County of Plumas, California
 Brief Legal Description Center East Southwest 1/64th, S1, T21N, R12E Mount Diablo Meridian



CORNER TYPE

Government Corner Control
 Meander Property
 Rancho Other

Date of Survey 10-9-2018

COORDINATES (Optional)

N. _____ E. _____
 Elevation _____
 Units Metric U.S. Survey Foot
 Horizontal Datum _____
 Zone _____ Epoch Date _____
 Vertical Datum _____

Complies with Public Resources Code §§8801-8819
 Complies with Public Resources Code §§8890-8902

PLS Act Ref: 8765(d) 8771 8773 Other:

Corner/Monument: Left as found Established Rebuilt Pre-Construction
 Found and tagged Reestablished Referenced Post-Construction

Narrative of corner identified and monument as found, set, reset, replaced, or removed:
 See sheet #2 for description (s):

Found 5/8" Aluminum Rod, Cap missing. Accepted as record monument per 9RS107.

Aluminum Rod is in excellent condition. Rebuilt and added to rock mound, set 3 1/4" Aluminum Cap on existing rod, stamped as shown on reverse. Set new bearing trees. Painted Rock mound red. Set mag spikes for bearing and distance and 54-9 sign on back of tree.

SURVEYOR'S STATEMENT

This Corner Record was prepared by me or under my direction in conformance with the Professional Land Surveyors' Act on 11/29/18
 Signed [Signature] P.L.S. or R.C.E. No. P.L.S. 7172

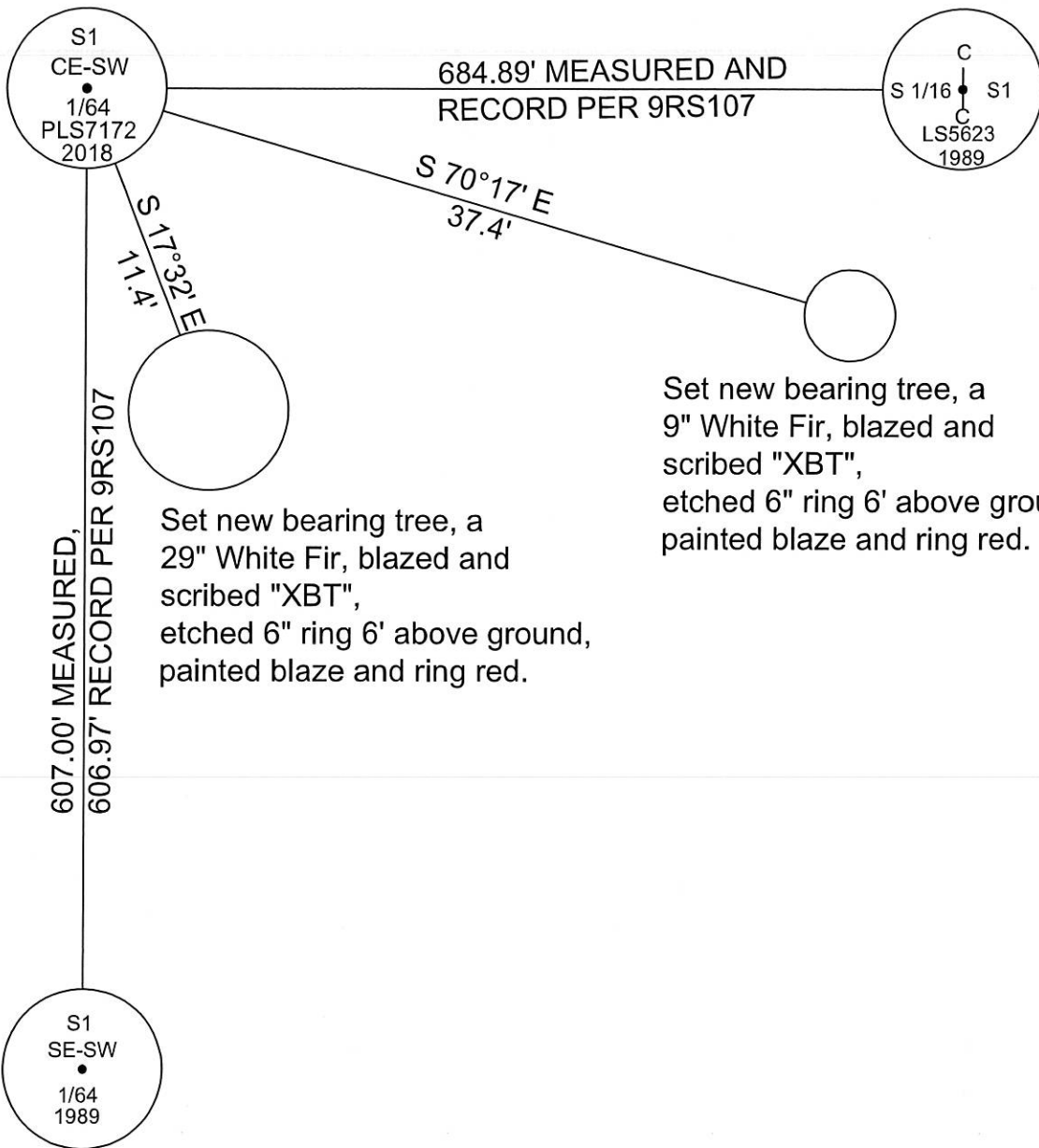


COUNTY SURVEYOR'S STATEMENT

This Corner Record was received 2/27/19
 and examined and filed 7/30/19
 Signed [Signature] P.L.S. or R.C.E. No. 30515
 Title COUNTY SURVEYOR



County Surveyor's Comment _____



Set new bearing tree, a 29" White Fir, blazed and scribed "XBT", etched 6" ring 6' above ground, painted blaze and ring red.

Set new bearing tree, a 9" White Fir, blazed and scribed "XBT", etched 6" ring 6' above ground, painted blaze and ring red.



NOT TO SCALE