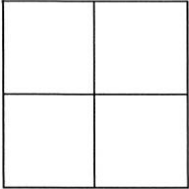


CORNER RECORD

Agency Index 439
 Document Number _____

City of near Whitehawk County of Plumas, California

Brief Legal Description Northwest 1/16th, S2, T21N, R12E Mount Diablo Meridian



CORNER TYPE

Government Corner Control
 Meander Property
 Rancho Other

Date of Survey 9-27-2018

COORDINATES (Optional)

N. _____ E. _____

Elevation _____

Units Metric U.S. Survey Foot

Horizontal Datum _____

Zone _____ Epoch Date _____

Vertical Datum _____

Complies with Public Resources Code §§8801-8819

Complies with Public Resources Code §§8890-8902

PLS Act Ref: 8765(d) 8771 8773 Other: _____

Corner/Monument: Left as found Established Rebuilt Pre-Construction
 Found and tagged Reestablished Referenced Post-Construction

Narrative of corner identified and monument as found, set, reset, replaced, or removed:

See sheet #2 for description (s):

Found $\frac{5}{8}$ " Aluminum Rod with $\frac{3}{4}$ " Aluminum Cap in rock mound, per 10RS101.

Monument in excellent condition. Rebuilt and added to rock mound, 3' diameter, 6" in height.

Set new bearing tree. Painted rocks red. Set post with 54-2 & 54-9 sign 2' southerly of monument.

SURVEYOR'S STATEMENT

This Corner Record was prepared by me or under my direction in conformance with the Professional Land Surveyors' Act on 11/29/18

Signed [Signature] P.L.S. or R.C.E. No. P.L.S. 7172



COUNTY SURVEYOR'S STATEMENT

This Corner Record was received 2/27/19

and examined and filed 7/30/19

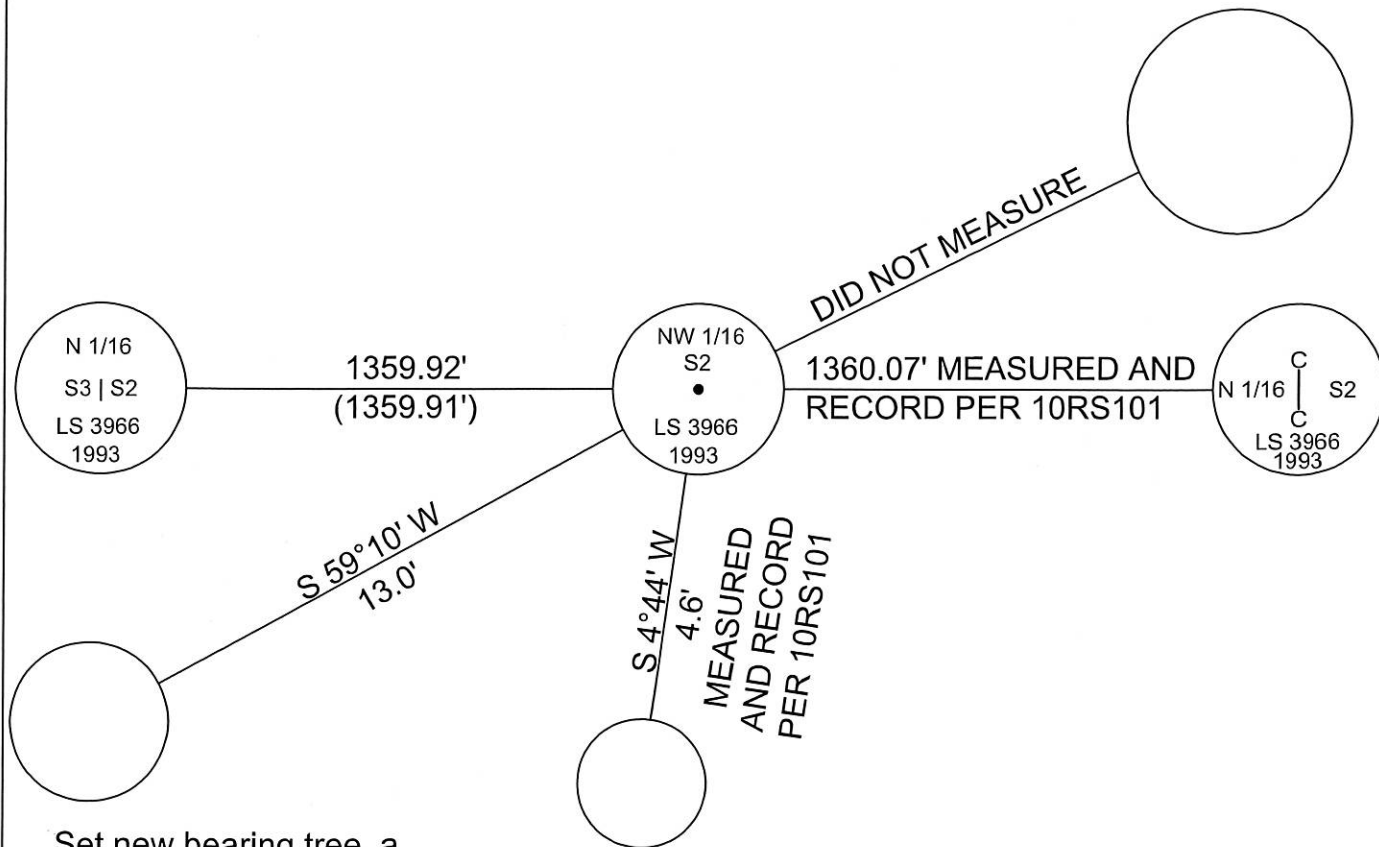
Signed R. Tom Hunter P.L.S. or R.C.E. No. 30515

Title County Surveyor



County Surveyor's Comment _____

10" Sugar Pine
Dead Snag - Left as is.



Set new bearing tree, a 7" Sugar Pine, blazed and scribed "NW 1/16 S2 BT", etched 6" ring 6' above ground, painted blaze and ring red. 54-3 sign. Mag Spikes for bearing and distance. 54-9 sign on back of tree.

Refreshed and Repainted 6" White Fir, painted blaze and ring. 54-3 sign. Mag Spikes for bearing and distance. 54-9 sign on back of tree.

() INDICATES RECORD DATA PER 10RS101



NOT TO SCALE