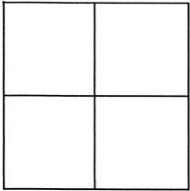


CORNER RECORD

Agency Index 440
 Document Number _____

City of near Whitehawk County of Plumas, California

Brief Legal Description East 1/4, S1, T21N, R12E Mount Diablo Meridian



CORNER TYPE

- Government Corner Control
 Meander Property
 Rancho Other

Date of Survey 10-12-2018

COORDINATES (Optional)

- N. _____ E. _____
 Elevation _____
 Units Metric U.S. Survey Foot
 Horizontal Datum _____
 Zone _____ Epoch Date _____
 Vertical Datum _____

- Complies with Public Resources Code §§8801-8819
 Complies with Public Resources Code §§8890-8902

- PLS Act Ref: 8765(d) 8771 8773 Other:
 Corner/Monument: Left as found Established Rebuilt Pre-Construction
 Found and tagged Reestablished Referenced Post-Construction

Narrative of corner identified and monument as found, set, reset, replaced, or removed:
 See sheet #2 for description (s):

Found 2 1/2" steel pipe with 3/4" brass cap in rock mound, per 9RS107.

Monument is in excellent condition. Rebuilt rock mound 3' in diameter, 4" in height. Set new bearing tree. Painted rocks red. Set post with 54-2 & 54-9 sign, 2' southwesterly.

SURVEYOR'S STATEMENT

This Corner Record was prepared by me or under my direction in conformance with the Professional Land Surveyors' Act on 11/29/18
 Signed [Signature] P.L.S. or R.C.E. No. P.L.S. 7172



COUNTY SURVEYOR'S STATEMENT

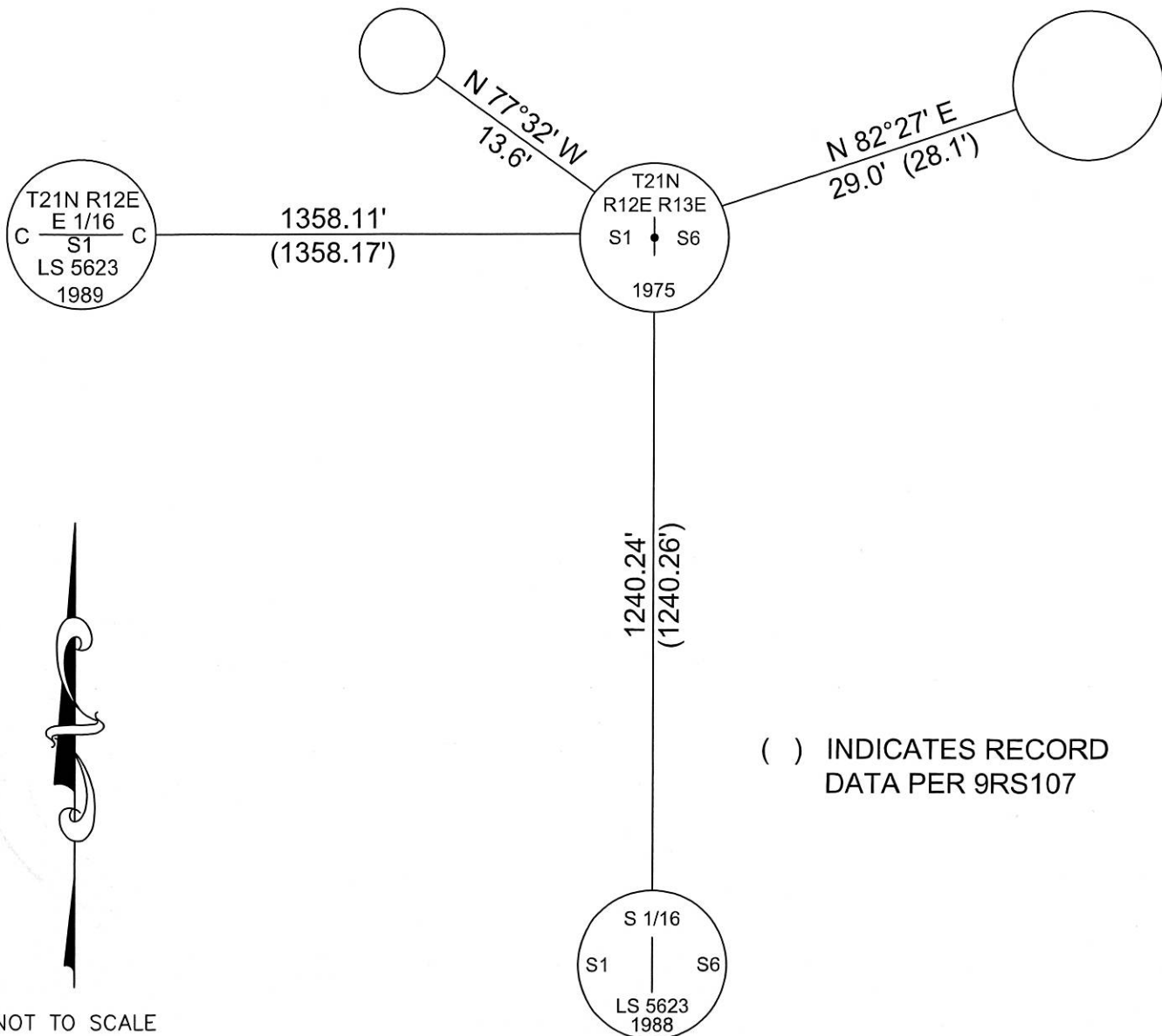
This Corner Record was received 2/29/19
 and examined and filed 7/30/19
 Signed [Signature] P.L.S. or R.C.E. No. 30515
 Title County Surveyor



County Surveyor's Comment _____

Set new bearing tree, a
 6" White Fir, blazed and scribed
 "E ¼ S1 BT", etched 6" ring 6' above ground,
 painted blaze and ring red, 54-3 sign,
 Mag Nail Spikes for bearing and distance,
 54-9 sign on back of tree.

Refreshed and Repainted
 38" Cedar, painted blaze
 and ring red. Mag Spike for
 bearing and distance.
 54-9 sign on back of tree.



NOT TO SCALE

() INDICATES RECORD DATA PER 9RS107