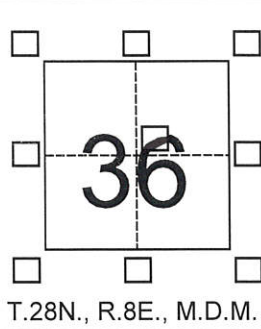


CORNER RECORD

Agency Index 442
 Document Number _____

City of _____ County of PLUMAS, California
 Brief Legal Description Lot 6, Lake Almanor County Club Unit No. 13, Bk. 3 Maps, Pgs. 91-92



CORNER TYPE

Government Corner Control
 Meander Property
 Rancho Other

Date of Survey June 12, 2019

COORDINATES (Optional)

N. _____ E. _____
 Elevation _____
 Units Metric U.S. Survey Foot
 Horizontal Datum _____
 Zone _____ Epoch Date _____
 Vertical Datum _____

Complies with Public Resources Code §§8801-8819
 Complies with Public Resources Code §§8890-8902

PLS Act Ref.: 8765(d) 8771 8773 Other:

Corner/Monument: Left as found Established Rebuilt Pre-Construction
 Found and tagged Reestablished Referenced Post-Construction

Narrative of corner identified and monument as found, set, reset, replaced, or removed:
 See sheet #2 for description(s):
 Found monuments as shown on Book 3 of Maps, at Pages 91-92; re-established and monumented the Northwest corner of Lot 6 at the proportional distance between said found monuments.

SURVEYOR'S STATEMENT

This Corner Record was prepared by me or under my direction in conformance with
 the Professional Land Surveyors' Act on July 23, 2019
 Signed Thomas E. Harris P.L.S. or R.C.E. No. 8532



67-23-2019

COUNTY SURVEYOR'S STATEMENT

This Corner Record was received 7/8/2019
 and examined and filed 8/6/19
 Signed R. Tom Shunto P.L.S. or R.C.E. No. 30515
 Title County Surveyor
 County Surveyor's Comment _____

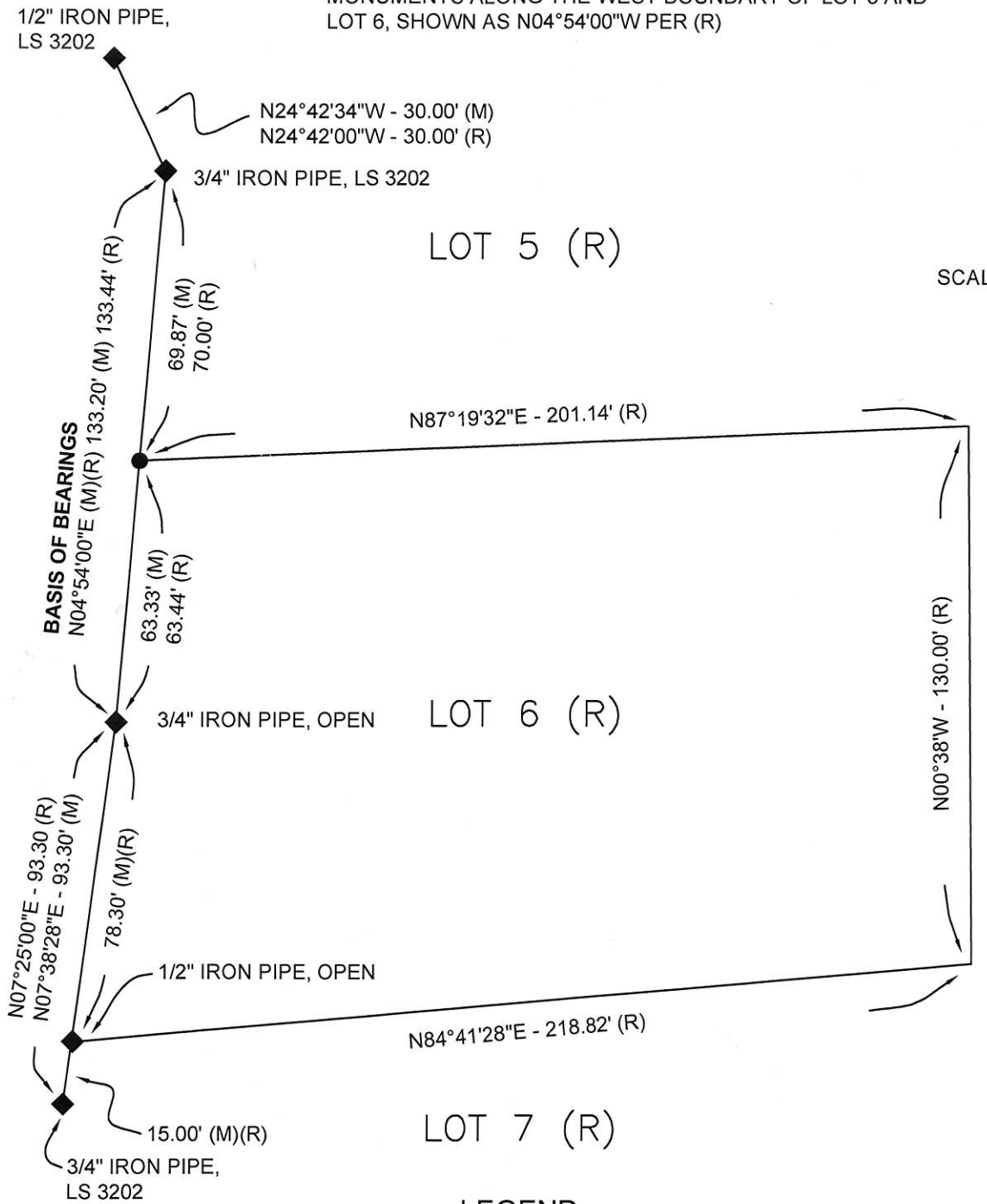


BASIS OF BEARINGS

BEARINGS SHOWN HEREON ARE TAKEN BETWEEN FOUND MONUMENTS ALONG THE WEST BOUNDARY OF LOT 5 AND LOT 6, SHOWN AS N04°54'00"W PER (R)



SCALE 1" = 40'



HIDDEN BEACH ROAD

LEGEND

- ◆ FOUND MONUMENT PER (R)
- SET 5/8" REBAR AND PLASTIC CAP, STAMPED LS 8532
- (M) MEASURED THIS SURVEY
- (R) BOOK 3 MAPS, PAGES 91-92