

CORNER RECORD

Agency Index 444

Document Number _____

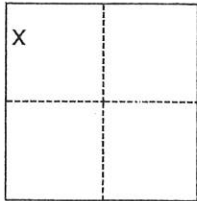
City of La Porte County of Plumas, California

Brief Legal Description Lots 2 & 3 of Block 14 La Porte Townsite, APN: 003-031-005 & 006

Sec. 16

CORNER TYPE

COORDINATES (Optional)



- Government Corner Control
 Meander Property
 Rancho Other

N. _____ E. _____

Elevation _____

Units Metric U.S. Survey Foot

Horizontal Datum _____

Zone _____ Epoch Date _____

Vertical Datum _____

Complies with Public Resources Code §§8801-8819

Complies with Public Resources Code §§8890-8902

Date of Survey August 2, 2019

T. 21 N., R. 9 E., M.D.M.

PLS Act Ref.: 8765(d) 8771 8773 Other:

Corner/Monument: Left as found Established Rebuilt Pre-Construction

Found and tagged Reestablished Referenced Post-Construction

Narrative of corner identified and monument as found, set, reset, replaced, or removed:

See sheet #2 for description(s):

Found monuments in position per La Porte Townsite Bk 02 Pg 75. Reset corners on West line of Lot 2 and the Southeast corner of Lot 3. See attached.

SURVEYOR'S STATEMENT

This Corner Record was prepared by me or under my direction in conformance with

the Professional Land Surveyors' Act on 11-19-19

Signed Andrew R. Cassano P.L.S. or R.C.E. No. LS 4370



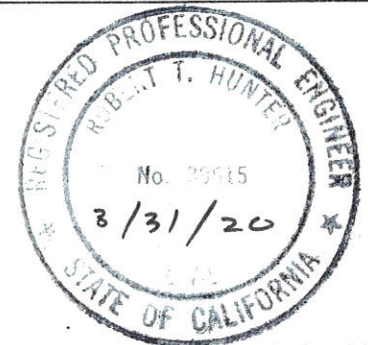
COUNTY SURVEYOR'S STATEMENT

This Corner Record was received 10/23/19

and examined and filed 12/20/19

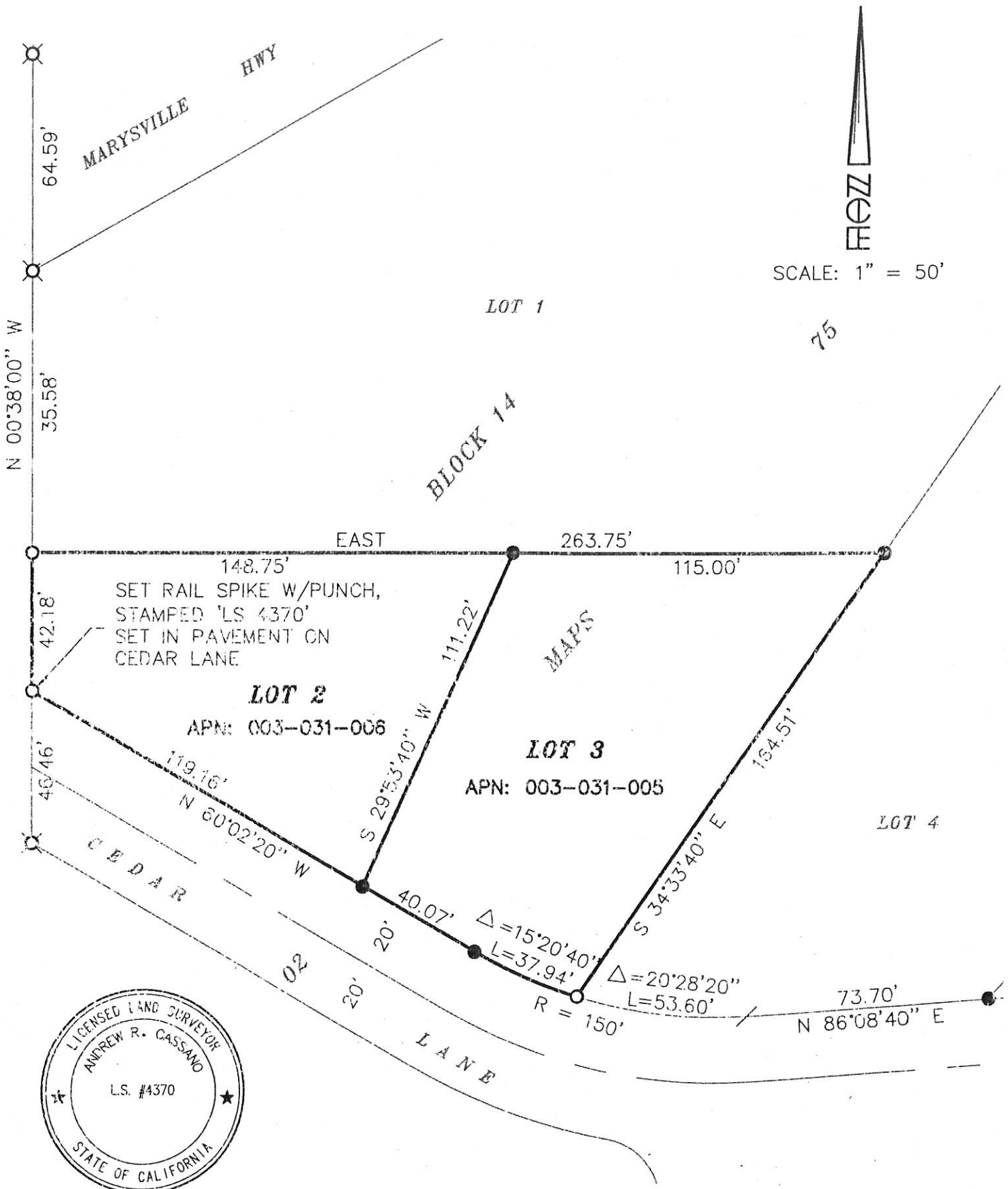
Signed R. Tom Hunter P.L.S. or R.C.E. No. _____

Title County Surveyor



County Surveyor's Comment

Regarding the property corner located at the SW corner of Lot 2; Gov. Code (GC) 27581 stipulates this monument should be set 12" below grade based on the prescriptive use by the County and its location in the "public highway." Furthermore GC 8771(a) states "Monuments set shall be sufficient in number and durability and efficiently placed so as to not be readily disturbed, to ensure, together with monuments already existing, the perpetuation or facile reestablishment of any point or line of the survey." Due to routine heavy snow removal operations through the winter season at the location of this survey, the SW corner of Lot 2, as shown to be set by this document, will be subject to heavy traffic impact and snow removal equipment. There is a high chance that this set monument will be removed or destroyed by these routine operations unless further measures are taken to install this monument in a more secure fashion.

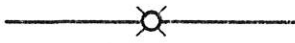

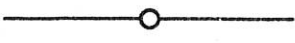



SCALE: 1" = 50'

75



LEGEND

-  FOUND 3" STEELE BOLT & TAG LS 1880 PER 02 MAPS 75
-  FOUND 1/2" IRON PIPE & TAG LS 1880 PER 02 MAPS 75
-  SET 3/4" IRON PIPE TAGGED L.S. 4370 OR AS DESCRIBED
-  NOTHING FOUND, NOTHING SET