

001-160.059

CORNER RECORD

COUNTY OF Plumas T. 28N R. 6E M.D. Meridian CALIFORNIA

CORNER TYPE: GOVT. CORNER MEANDER RANCHO CONTROL OTHER

CORNER IDENTIFICATION — DATE OF VISIT September 3, 1976



CORNER — LEFT AS FOUND FOUND AND TAGGED REESTABLISHED OBLITERATED CORNER REBUILT

PHYSICAL DESCRIPTION OF CORNER FOUND; EVIDENCE AND METHOD USED TO IDENTIFY OR REESTABLISH

Record of Survey

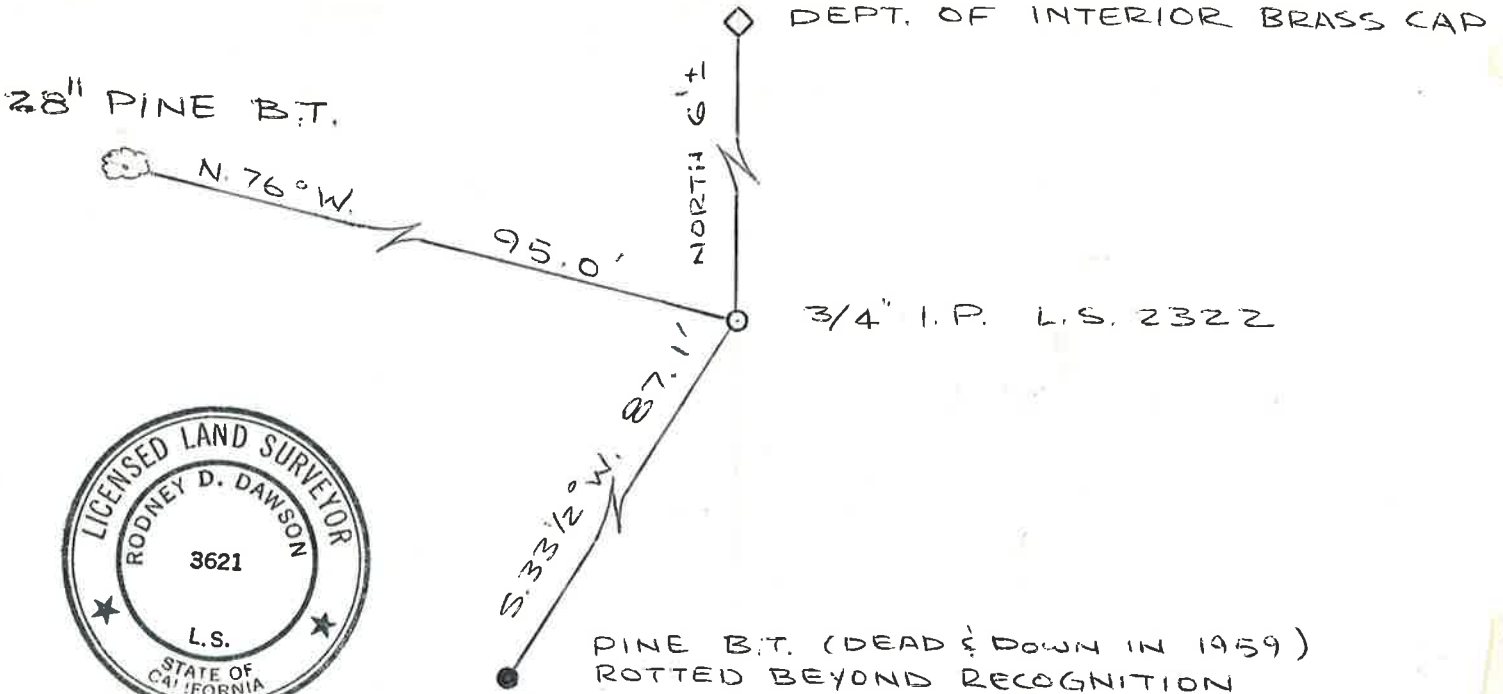
Corner per record was not accepted by Forest Service & B.L.M.
This report shows the relationship between corners.

PHYSICAL DESCRIPTION OF MONUMENTS REBUILT OR PERPETUATED

Department of Interior brass cap.
3/4" I.P. L. S. #2322

CALIFORNIA COORDINATE SYSTEM ORDER: FIRST SECOND THIRD
STATIONS USED: NGS (USC & GS) STATE COUNTY OTHER STATION _____ STATION _____
ZONE _____ ELEVATION _____ NORTHINGS (Y) _____ EASTINGS (X) _____

SKETCH: (Include reference tie or witness points, remarks and topo of area)



SURVEYOR'S CERTIFICATE

THIS CORNER RECORD WAS PREPARED BY ME OR UNDER MY DIRECTION IN CONFORMANCE WITH THE LAND SURVEYORS ACT ON September 3, 1976

SIGNED: Rodney D. Dawson

L.S. or R.C.E. No.: L. S. #3621

SEAL

COUNTY SURVEYOR'S CERTIFICATE

THE CORNER RECORD WAS RECEIVED Sept. 3, 1977 AND EXAMINED AND FILED Oct. 31, 1977

BY: [Signature]
TITLE: County Engineer

DOCUMENT No. 1

STATEMENT ON BACK OF SHEET

YES NO