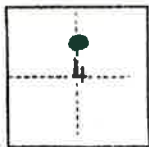


# CORNER RECORD

COUNTY OF Plumas T. 26N R. 10E MDB& MERIDIAN CALIFORNIA

CORNER TYPE: GOV'T. CORNER  MEANDER  RANCHO  CONTROL  OTHER   
CORNER IDENTIFICATION — DATE OF VISIT Nov. 13 19 75



CORNER — LEFT AS FOUND  FOUND AND TAGGED  REESTABLISHED OBLITERATED CORNER  REBUILT

PHYSICAL DESCRIPTION OF CORNER FOUND; EVIDENCE AND METHOD USED TO IDENTIFY OR REESTABLISH

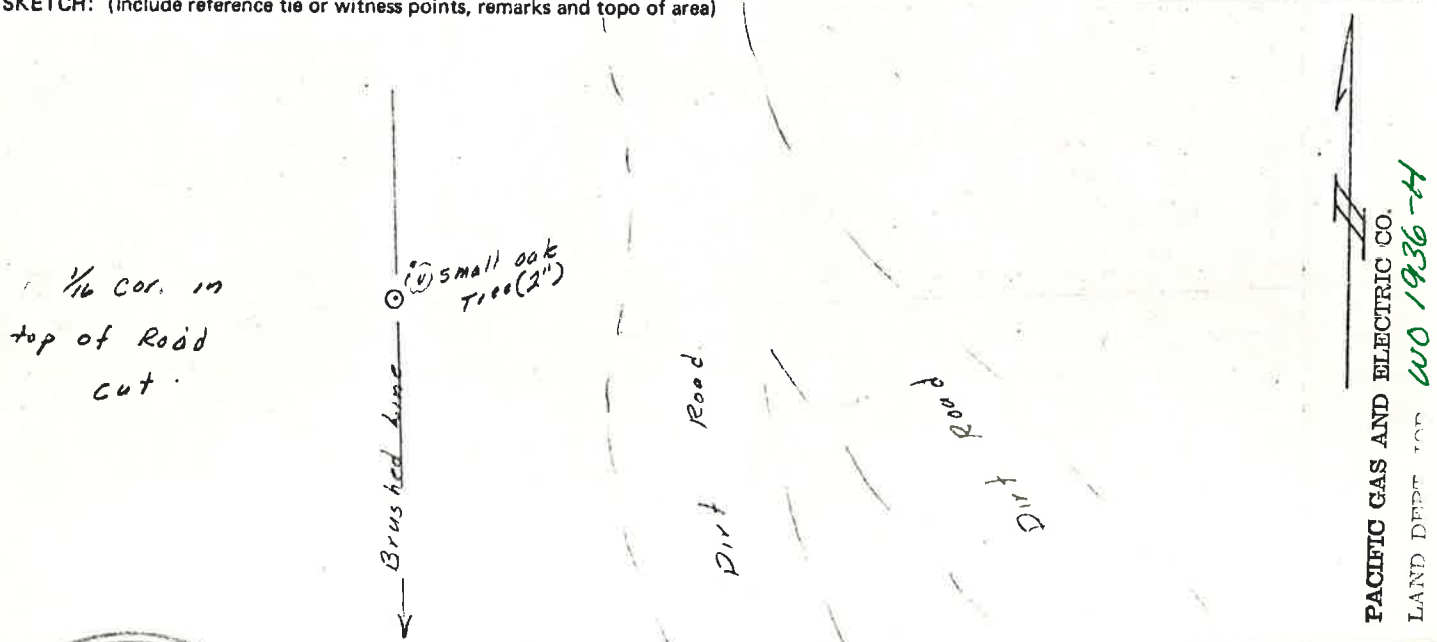
Fd.  $1\frac{1}{2}$ " Iron Pipe tagged IS 3202 in Rock Mound. Interior 1/16 corner section 4.

PHYSICAL DESCRIPTION OF MONUMENTS REBUILT OR PERPETUATED

**CORNER LOCATED BY P.G.&E. SURVEY  
BUT NOT VERIFIED**

CALIFORNIA COORDINATE SYSTEM ORDER: FIRST  SECOND  THIRD   
STATIONS USED: NGS (USC & GS)  STATE  COUNTY  OTHER  STATION \_\_\_\_\_ STATION \_\_\_\_\_  
ZONE \_\_\_\_\_ ELEVATION \_\_\_\_\_ NORTHINGS (Y) \_\_\_\_\_ EASTINGS (X) \_\_\_\_\_

SKETCH: (Include reference tie or witness points, remarks and topo of area)



### SURVEYOR'S CERTIFICATE

THIS CORNER RECORD WAS PREPARED BY ME OR UNDER MY DIRECTION IN CONFORMANCE WITH THE LAND SURVEYORS ACT

ON December 2 19 75  
No. 3771

SIGNED: \_\_\_\_\_

L.S. or R.C.E. No. KS 3771

### COUNTY SURVEYOR'S CERTIFICATE

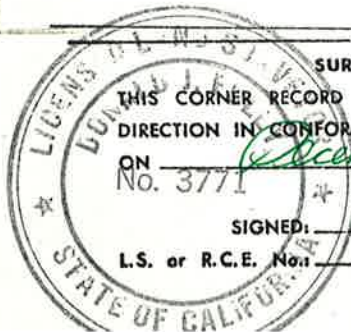
THE CORNER RECORD WAS RECEIVED Dec. 2 19 75  
AND EXAMINED AND FILED Oct. 31 19 77

BY: [Signature]  
TITLE: County Engineer

DOCUMENT No. 3

STATEMENT ON BACK OF SHEET

YES  NO



SEAL