

CORNER RECORD

COUNTY OF Plumas T. 23 N. R. 7 E. MDBE MERIDIAN CALIFORNIA

CORNER TYPE: GOV'T. CORNER MEANDER RANCHO CONTROL OTHER

CORNER IDENTIFICATION — DATE OF VISIT 11/18/76 1976

5	4
8	9

CORNER — LEFT AS FOUND FOUND AND TAGGED REESTABLISHED OBLITERATED CORNER REBUILT

PHYSICAL DESCRIPTION OF CORNER FOUND; EVIDENCE AND METHOD USED TO IDENTIFY OR REESTABLISH

FOUND ORIGINAL BEARING TREE (WE OPEN AND EXPOSE SCRIBINGS)
 40" W.F. IR S 15° E 139 LKS FITS ORIGINAL NOTE CALLS

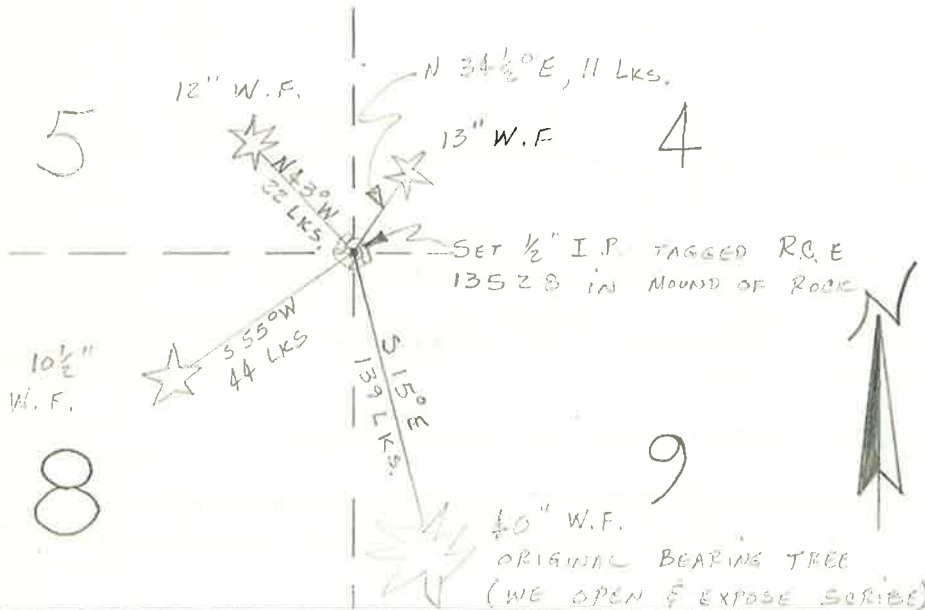
PHYSICAL DESCRIPTION OF MONUMENTS REBUILT OR PERPETUATED

PLACED 1/2" I.P. TAGGED R.C.E 13528 IN MOUND OF ROCK
 SCRIBED 13" W.F. IR N 34 1/2° E, 11 LKS.; 12" W.F. IR N 43° W, 22 LKS.; 10 1/2" W.F. IR S 55° W, 44 LKS.

TREES SCRIBED WITH S — T 23 N R 7 E AND "K" TAGGED

CALIFORNIA COORDINATE SYSTEM ORDER: FIRST SECOND THIRD
 STATIONS USED: NGS (USC & GS) STATE COUNTY OTHER STATION BUCK A STATION BUCKHORN A
 ZONE 1 ELEVATION _____ NORTHINGS (Y) 195,826,273 EASTINGS (X) 2,222,054,878

SKETCH: (Include reference tie or witness points, remarks and topo of area)



PERPETUATED 11/18/76
 BY J. BROOK — P.C.R.D.
 O. BROWN — U.S.F.S.
 T. HUNTER — P.C.R.D.
 R. HUMPHREY — P.C.R.D.

NOTE: NEW BEARING TREES
 SCRIBED & "K" TAGGED

SURVEYOR'S CERTIFICATE

THIS CORNER RECORD WAS PREPARED BY ME OR UNDER MY DIRECTION IN CONFORMANCE WITH THE LAND SURVEYORS ACT ON 11-18 1977

SIGNED: J. Brook

L.S. or R.C.E. No.: 13528

SEAL

COUNTY SURVEYOR'S CERTIFICATE

THE CORNER RECORD WAS RECEIVED 11-18 1977 AND EXAMINED AND FILED Oct. 31 1977

BY: [Signature]
 TITLE: County Engineer

DOCUMENT No. 4

STATEMENT ON BACK OF SHEET

YES NO