

CORNER RECORD

COUNTY OF Plumas T. 26N. R. 10E. MDB& MERIDIAN CALIFORNIA

CORNER TYPE: GOV'T. CORNER MEANDER RANCHO CONTROL OTHER
CORNER IDENTIFICATION — DATE OF VISIT Nov. 12 19 75



Fd. 1" Iron Pipe in Rock Mound.
Center of Sec. 4

CORNER — LEFT AS FOUND FOUND AND TAGGED REESTABLISHED OBLITERATED CORNER REBUILT

PHYSICAL DESCRIPTION OF CORNER FOUND, EVIDENCE AND METHOD USED TO IDENTIFY OR REESTABLISH

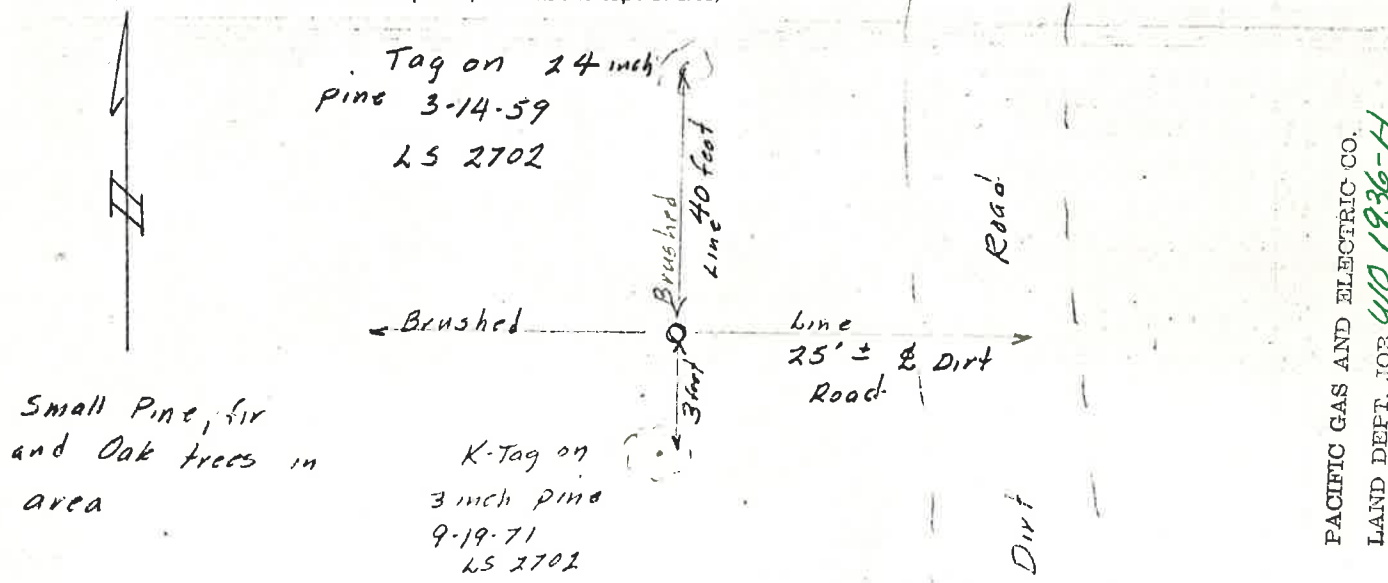
K-tag on 3" pine locatd 3 feet South of corner.
Dated 9-19-71 by LS 2702. K-tag on 24 inch pine tree North corner 40 feet
dated 3-14-59. LS 2702

PHYSICAL DESCRIPTION OF MONUMENTS REBUILT OR PERPETUATED

CORNER LOCATED BY P.G.&E. SURVEY
BUT NOT VERIFIED

CALIFORNIA COORDINATE SYSTEM ORDER: FIRST SECOND THIRD
STATIONS USED: NGS (USC & GS) STATE COUNTY OTHER STATION _____ STATION _____
ZONE _____ ELEVATION _____ NORTHINGS (Y) _____ EASTINGS (X) _____

SKETCH: (Include reference tie or witness points, remarks and topo of area)



SURVEYOR'S CERTIFICATE

THIS CORNER RECORD WAS PREPARED BY ME OR UNDER MY DIRECTION IN CONFORMANCE WITH THE LAND SURVEYORS ACT ON December 2 19 75 No. 3771
SIGNED: D. J. Foley
L.S. or R.C.E. No. LS 3771

SEAL

COUNTY SURVEYOR'S CERTIFICATE

THE CORNER RECORD WAS RECEIVED Dec. 2 19 75 AND EXAMINED AND FILED Oct. 31 19 77
BY: [Signature]
TITLE: County Engineer

DOCUMENT No. 5

STATEMENT ON BACK OF SHEET

YES NO