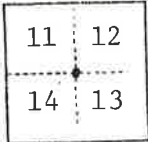


002-06

CORNER RECORD

COUNTY OF Plumas T. 26N R. 7E M.D.B. & MERIDIAN CALIFORNIA

CORNER TYPE: GOV'T. CORNER MEANDER RANCHO CONTROL OTHER
CORNER IDENTIFICATION -- DATE OF VISIT May 28 19 75



CORNER -- LEFT AS FOUND FOUND AND TAGGED REESTABLISHED OBLITERATED CORNER REBUILT

PHYSICAL DESCRIPTION OF CORNER FOUND; EVIDENCE AND METHOD USED TO IDENTIFY OR REESTABLISH

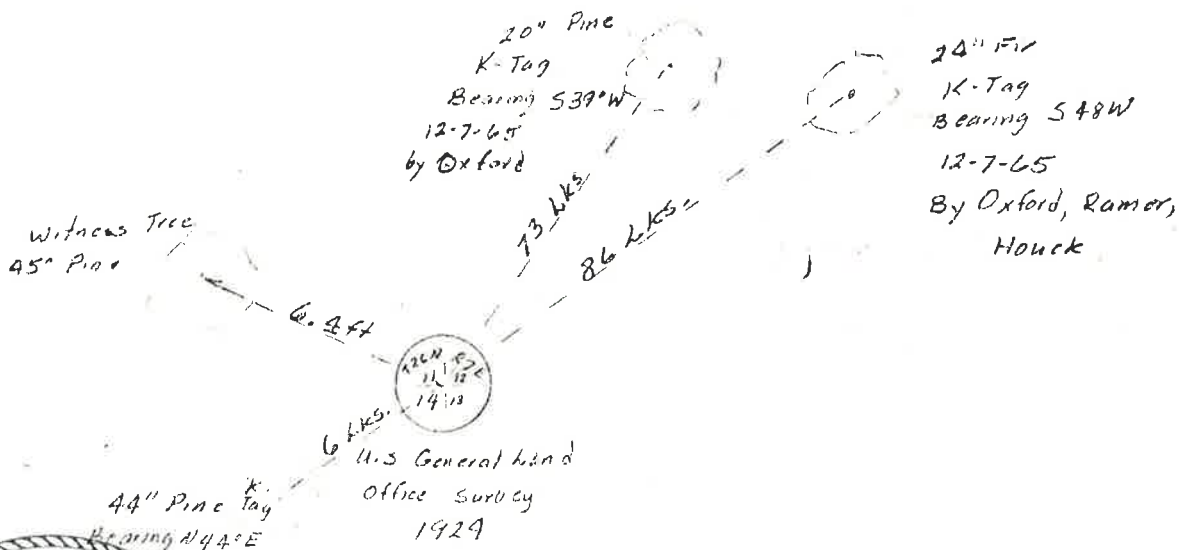
Found 2 in. Iron Pipe with Brass Cap. Chained from K. Tag on Line Tree North 7.9 ch. fit Dist. Dist. from Tags on witness trees fit.

Brass Cap Marked $\frac{11}{14} \frac{12}{13}$ T.26N., R.7E. U. S. General Land Office Survey 1924.

PHYSICAL DESCRIPTION OF MONUMENTS REBUILT OR PERPETUATED

CALIFORNIA COORDINATE SYSTEM ORDER: FIRST SECOND THIRD
STATIONS USED: NGS (USC & GS) STATE COUNTY OTHER STATION _____ STATION _____
ZONE _____ ELEVATION _____ NORTHINGS (Y) _____ EASTINGS (X) _____

SKETCH. (Include reference tie or witness points, remarks and topo of area)



SURVEYOR'S CERTIFICATE
 THIS CORNER RECORD WAS PREPARED BY ME OR UNDER MY DIRECTION IN CONFORMANCE WITH THE LAND SURVEYORS ACT
 NO. 3613 July 29 19 75
 SIGNED: [Signature]
LS 3613

COUNTY SURVEYOR'S CERTIFICATE
 THE CORNER RECORD WAS RECEIVED July 21
 AND EXAMINED AND FILED Oct 31 19 77
 BY: [Signature]
 TITLE: County Engineer
 DOCUMENT No. 6
 STATEMENT ON BACK OF SHEET YES

SEAL