

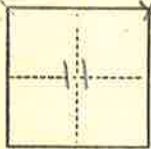
# CORNER RECORD

3

COUNTY OF Plumas T. 23N R. 7E MD&B MERIDIAN CALIFORNIA

CORNER TYPE: GOV'T. CORNER  MEANDER  RANCHO  CONTROL  OTHER

CORNER IDENTIFICATION — DATE OF VISIT 12/11 19 74



CORNER — LEFT AS FOUND  FOUND AND TAGGED  REESTABLISHED OBLITERATED CORNER  REBUILT

### PHYSICAL DESCRIPTION OF CORNER FOUND; EVIDENCE AND METHOD USED TO IDENTIFY OR REESTABLISH

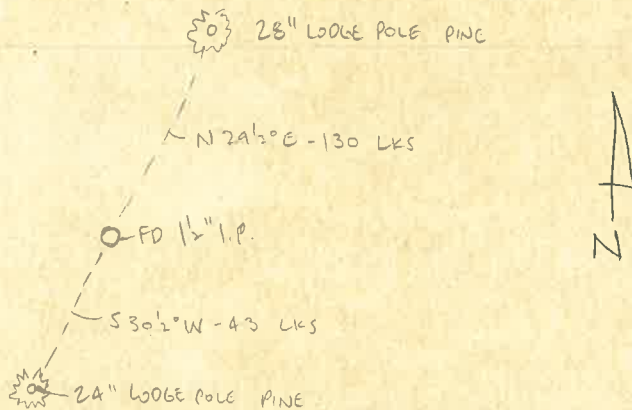
FOUND  $1\frac{1}{2}$ " I.P. IN SWAMPY GROUND  
FOUND 28" LODGE POLE PINE N  $29\frac{1}{2}$ ° E - 130 LKS  
FOUND 24" LODGE POLE PINE S  $30\frac{1}{2}$ ° W - 43 LKS

### PHYSICAL DESCRIPTION OF MONUMENTS REBUILT OR PERPETUATED

SUBSEQUENTLY REPLACED W/BRASS CAP, LS 2843 BY JOHN HAMEY, BEFORE THIS SURVEY COMPLETE

CALIFORNIA COORDINATE SYSTEM ORDER: FIRST  SECOND  THIRD   
STATIONS USED: NGS (USC & GS)  STATE  COUNTY  OTHER  STATION BUCK Δ STATION BUCKHORN Δ  
ZONE 1 ELEVATION \_\_\_\_\_ NORTHINGS (Y) 196 199. 349 EASTINGS (X) 2 237 543. 679

### SKETCH: (Include reference tie or witness points, remarks and topo of area)



#### SURVEYOR'S CERTIFICATE

THIS CORNER RECORD WAS PREPARED BY ME OR UNDER MY DIRECTION IN CONFORMANCE WITH THE LAND SURVEYORS ACT ON 11-28 19 77

SIGNED: Laurance J. Brock

L.S. or R.C.E. No.: 13528

SEAL

#### COUNTY SURVEYOR'S CERTIFICATE

THE CORNER RECORD WAS RECEIVED 11-28 19 77 AND EXAMINED AND FILED 11-28 19 77

BY: [Signature]  
TITLE: County Surveyor

DOCUMENT No. 8

STATEMENT ON BACK OF SHEET

YES  NO