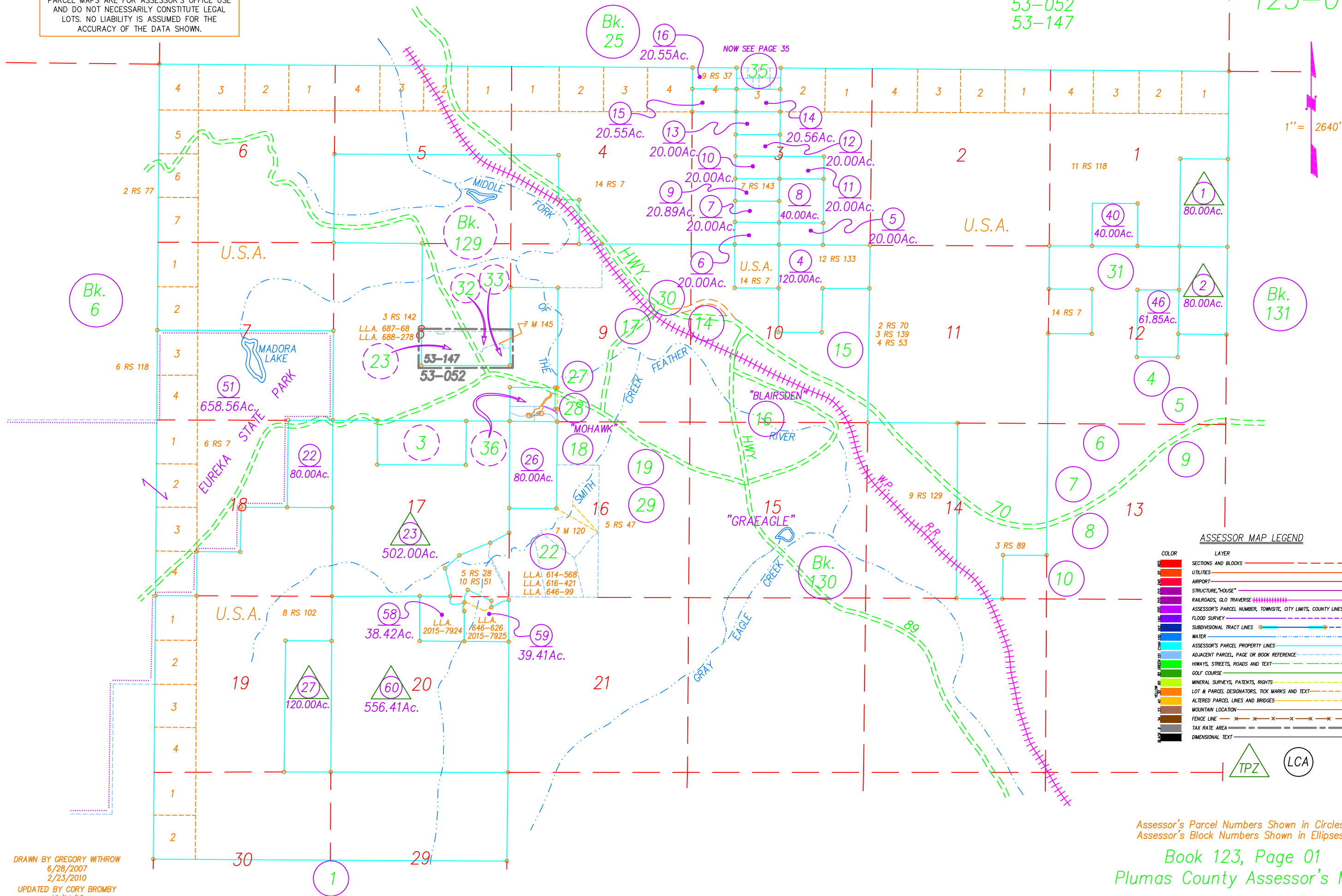


NOTE: ALL INFORMATION SHOWN ON ASSESSOR PARCEL MAPS ARE FOR ASSESSOR'S OFFICE USE AND DO NOT NECESSARILY CONSTITUTE LEGAL LOTS. NO LIABILITY IS ASSUMED FOR THE ACCURACY OF THE DATA SHOWN.

POR. T. 22 N., R. 12 E., M.D.B.&M.

Tax Rate Area  
53-052  
53-147

123-01



ASSESSOR MAP LEGEND

COLOR	LAYER
Red	SECTIONS AND BLOCKS
Orange	UTILITIES
Yellow	AIRPORT
Green	STRUCTURE, "HOUSE"
Blue	RAILROADS, GLO TRAVERSE
Purple	ASSESSOR'S PARCEL NUMBER, TOWNSHIP, CITY LIMITS, COUNTY LINES
Light Blue	FLOOD SURVEY
Dark Blue	SUBDIVISIONAL TRACT LINES
Light Green	WATER
Light Purple	ASSESSOR'S PARCEL PROPERTY LINES
Light Orange	ADJACENT PARCEL, PAGE OR BOOK REFERENCE
Light Green	HIWAYS, STREETS, ROADS AND TEXT
Light Blue	GOLF COURSE
Light Purple	MINERAL SURVEYS, PATENTS, RIGHTS
Light Orange	LOT & PARCEL DESIGNATORS, TICK MARKS AND TEXT
Light Green	ALTERED PARCEL LINES AND BRIDGES
Light Blue	MOUNTAIN LOCATION
Light Purple	FENCE LINE
Light Orange	TAX RATE AREA
Light Green	DIMENSIONAL TEXT



Assessor's Parcel Numbers Shown in Circles.  
Assessor's Block Numbers Shown in Ellipses.

Book 123, Page 01  
Plumas County Assessor's Map

DRAWN BY GREGORY WITHROW  
6/28/2007  
2/23/2010  
UPDATED BY CORY BROMBY  
12/14/15