

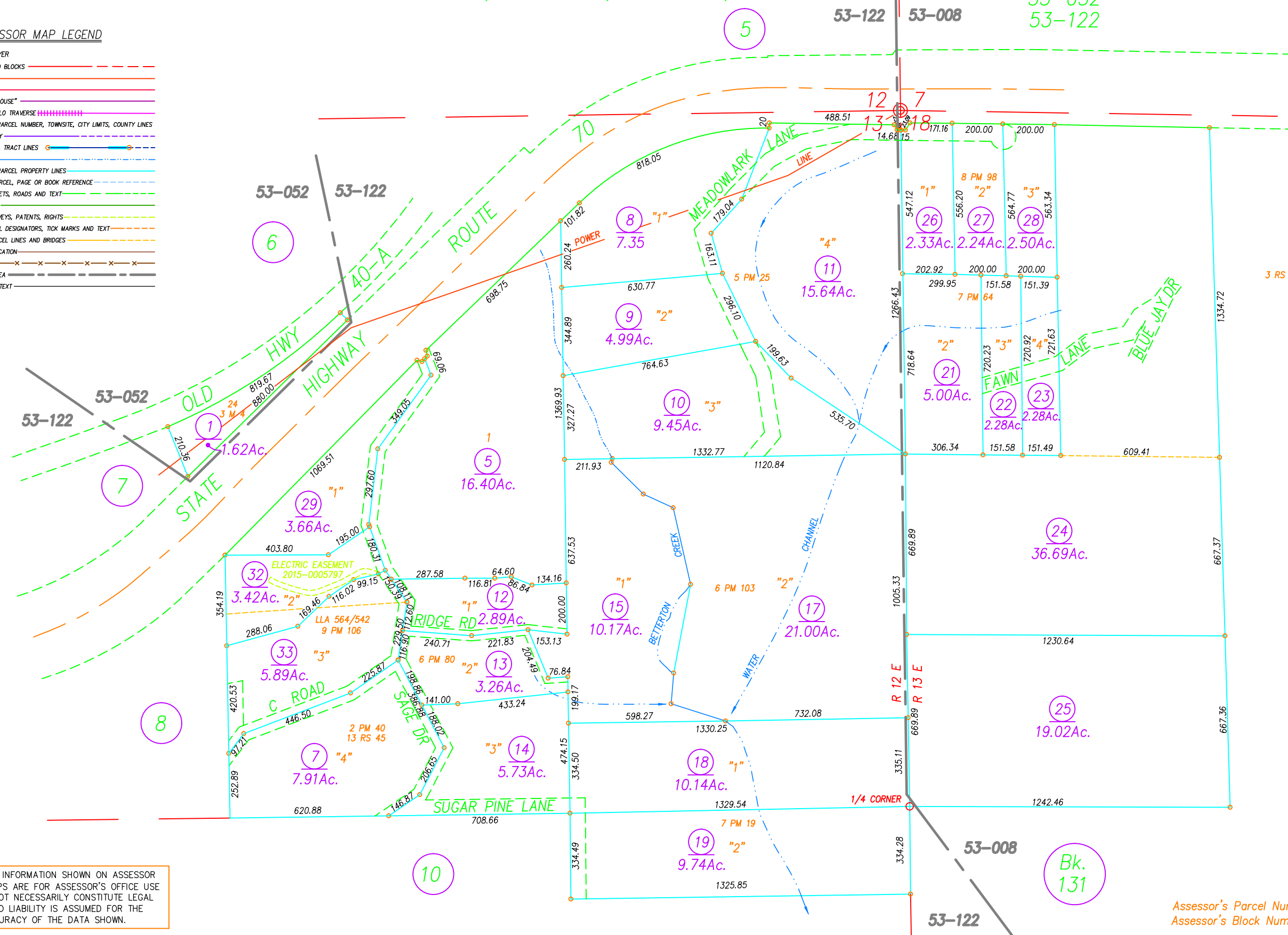
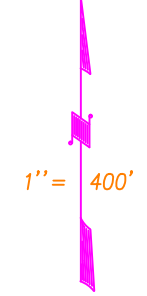
POR. SEC. 13, T. 22 N., R. 12 E., M.D.B.&M.
 POR. SEC. 18, T. 22 N., R. 13 E., M.D.B.&M.

Tax Rate Area
 53-008
 53-052
 53-122

123-09

ASSESSOR MAP LEGEND

COLOR	LAYER
Red	SECTIONS AND BLOCKS
Orange	UTILITIES
Yellow	AIRPORT
Light Green	STRUCTURE, "HOUSE"
Green	RAILROADS, GLO TRAVERSE
Dark Green	ASSESSOR'S PARCEL NUMBER, TOWNSHIP, CITY LIMITS, COUNTY LINES
Light Blue	FLOOD SURVEY
Blue	SUBDIVISIONAL TRACT LINES
Dark Blue	WATER
Light Cyan	ASSESSOR'S PARCEL PROPERTY LINES
Light Green	ADJACENT PARCEL, PAGE OR BOOK REFERENCE
Light Green	HIWAYS, STREETS, ROADS AND TEXT
Light Green	GOLF COURSE
Light Green	MINERAL SURVEYS, PATENTS, RIGHTS
Light Green	LOT & PARCEL DESIGNATORS, TICK MARKS AND TEXT
Light Green	ALTERED PARCEL LINES AND BRIDGES
Light Green	MOUNTAIN LOCATION
Light Green	FENCE LINE
Light Green	TAX RATE AREA
Light Green	DIMENSIONAL TEXT



NOTE: ALL INFORMATION SHOWN ON ASSESSOR PARCEL MAPS ARE FOR ASSESSOR'S OFFICE USE AND DO NOT NECESSARILY CONSTITUTE LEGAL LOTS. NO LIABILITY IS ASSUMED FOR THE ACCURACY OF THE DATA SHOWN.

Assessor's Parcel Numbers Shown in Circles.
 Assessor's Block Numbers Shown in Ellipses.

DRAWN BY GREGORY WITHROW
 UPDATED BY CORY BROMBY
 9/28/15

Book 123, Page 09
 Plumas County Assessor's Map