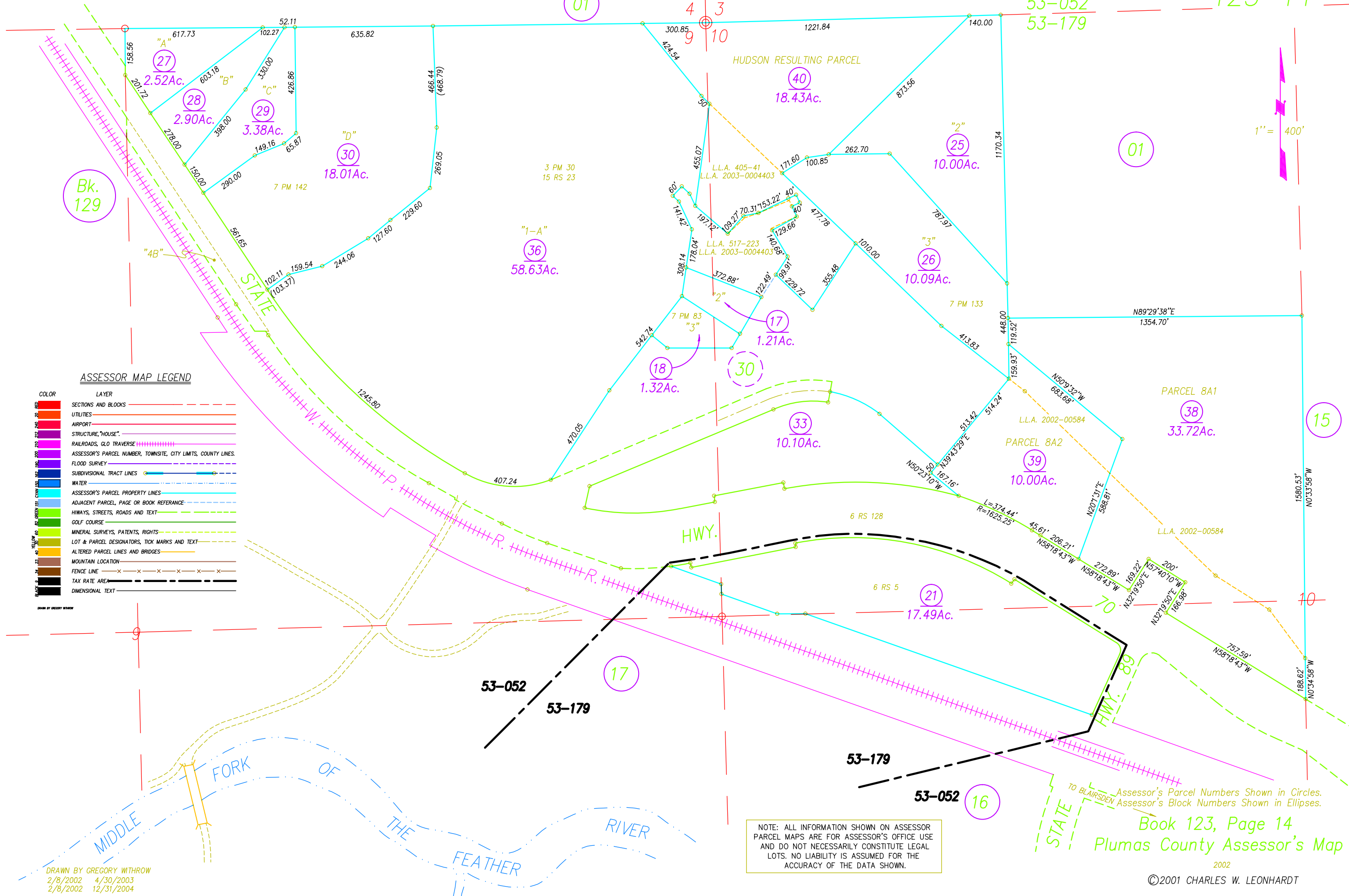


POR. SEC. 9 & 10, T. 22 N., R. 12 E., M.D.B.&M.

Tax Rate Area
53-052
53-179

123-14



ASSESSOR MAP LEGEND

COLOR	LAYER
Red	SECTIONS AND BLOCKS
Blue	UTILITIES
Yellow	AIRPORT
Green	STRUCTURE, "HOUSE"
Purple	RAILROADS, GLO TRAVERSE
Pink	ASSESSOR'S PARCEL NUMBER, TOWNSITE, CITY LIMITS, COUNTY LINES.
Light Blue	FLOOD SURVEY
Light Green	SUBDIVISIONAL TRACT LINES
Dark Blue	WATER
Light Purple	ASSESSOR'S PARCEL PROPERTY LINES
Light Blue	ADJACENT PARCEL, PAGE OR BOOK REFERENCE
Light Green	HIWAYS, STREETS, ROADS AND TEXT
Light Yellow	GOLF COURSE
Light Purple	MINERAL SURVEYS, PATENTS, RIGHTS
Light Green	LOT & PARCEL DESIGNATORS, TICK MARKS AND TEXT
Light Blue	ALTERED PARCEL LINES AND BRIDGES
Light Purple	MOUNTAIN LOCATION
Light Green	FENCE LINE
Light Blue	TAX RATE AREA
Light Purple	DIMENSIONAL TEXT

1" = 400'

NOTE: ALL INFORMATION SHOWN ON ASSESSOR PARCEL MAPS ARE FOR ASSESSOR'S OFFICE USE AND DO NOT NECESSARILY CONSTITUTE LEGAL LOTS. NO LIABILITY IS ASSUMED FOR THE ACCURACY OF THE DATA SHOWN.

Assessor's Parcel Numbers Shown in Circles.
Assessor's Block Numbers Shown in Ellipses.
Book 123, Page 14
Plumas County Assessor's Map

DRAWN BY GREGORY WITHROW
2/8/2002 4/30/2003
2/8/2002 12/31/2004

©2001 CHARLES W. LEONHARDT