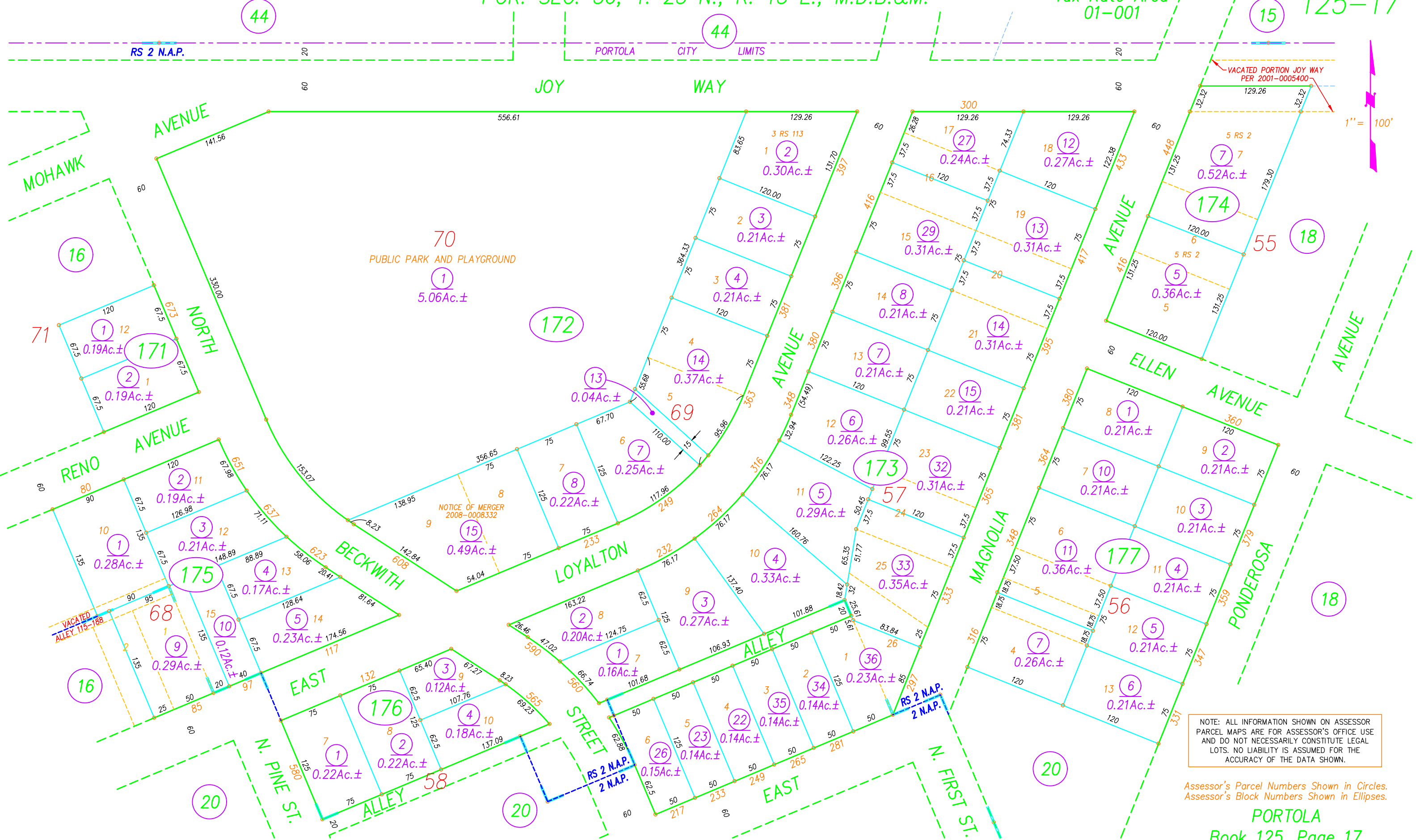


POR. SEC. 36, T. 23 N., R. 13 E., M.D.B.&M.

Tax Rate Area
01-001

125-17



NOTE: ALL INFORMATION SHOWN ON ASSESSOR PARCEL MAPS ARE FOR ASSESSOR'S OFFICE USE AND DO NOT NECESSARILY CONSTITUTE LEGAL LOTS. NO LIABILITY IS ASSUMED FOR THE ACCURACY OF THE DATA SHOWN.

Assessor's Parcel Numbers Shown in Circles.
Assessor's Block Numbers Shown in Ellipses.

SECOND NORTH ADDITION TO PORTOLA, R.M. BK. A, PG. 30
RESUB. OF POR. SECOND NORTH ADD. TO PORTOLA, R.M. BK. 2, PG. 2; AMENDED R.M. BK. 2, PG. 43

PORTOLA
Book 125, Page 17
Plumas County Assessor's Map

DRAWN BY GREGORY WITHROW
7/20/01 11/21/08
REDRAWN BY CORY BROMBY
1/31/22