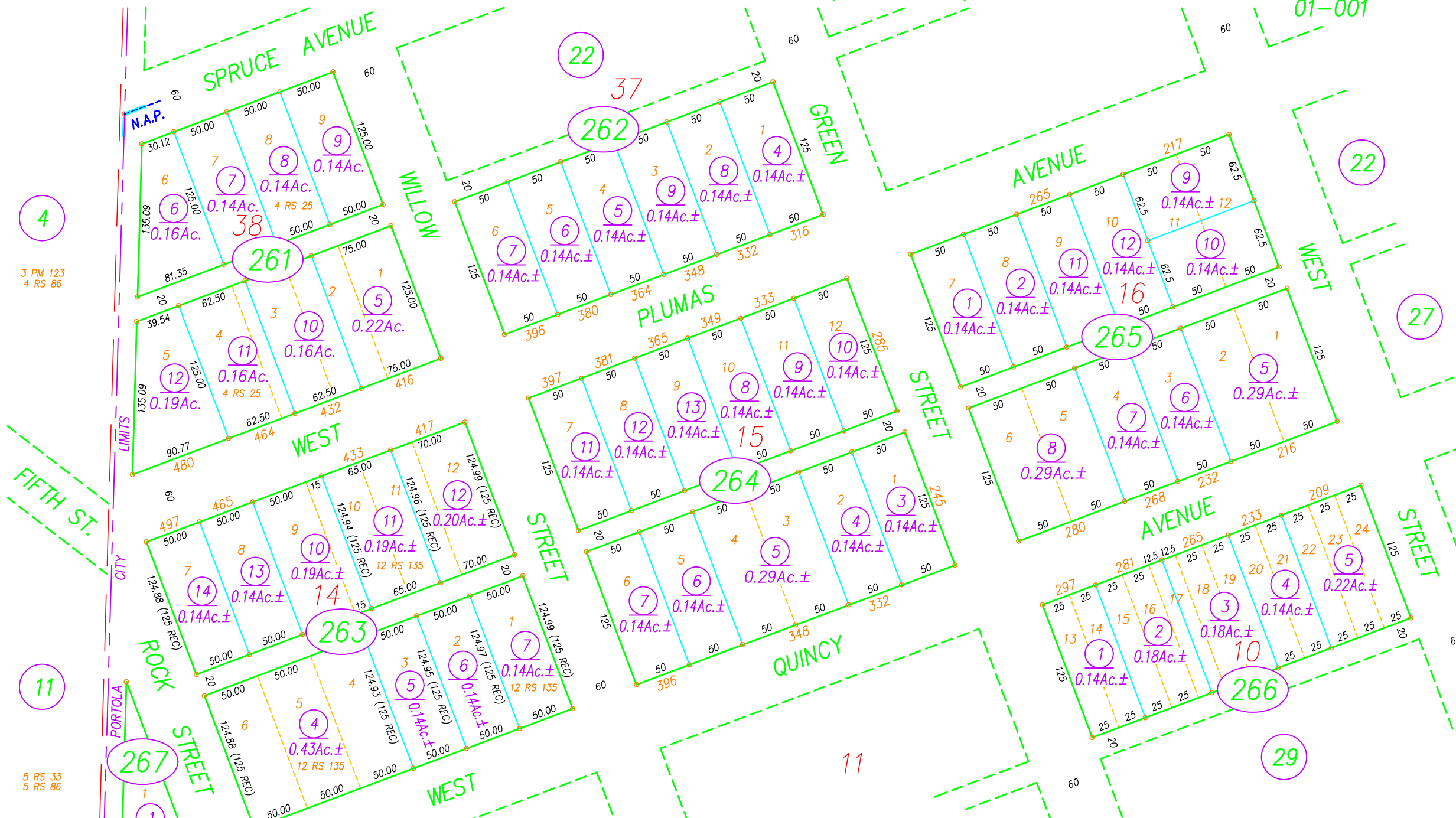


1" = 100'



ASSESSOR MAP LEGEND

COLOR	LAYER
RED	SECTIONS AND BLOCKS
20	UTILITIES
240	AIRPORT
212	STRUCTURE, "HOUSE"
210	RAILROADS, GLO TRAVERSE
200	APN, TOWNSITE, CITY LIMITS, COUNTY LINES
190	FLOOD SURVEY
162	SUBDIVISIONAL TRACT LINES
150	WATER
CYAN	PROPERTY LINES
151	ADJACENT PARCEL OR BOOK REFERENCE
GREEN	HIWAYS, STREETS, ROADS, TEXT
82	GOLF COURSE
60	MINERAL SURVEYS, PATENTS, RIGHTS
YELLOW	LOT/PARCEL DESIGNATORS, TEXT
40	ALTERED PARCEL LINES, BRIDGES
23	MOUNTAIN LOCATION
34	FENCE LINE
9	TAX RATE AREA
BLACK	DIMENSIONAL TEXT

NOTE: ALL INFORMATION SHOWN ON ASSESSOR PARCEL MAPS ARE FOR ASSESSOR'S OFFICE USE AND DO NOT NECESSARILY CONSTITUTE LEGAL LOTS. NO LIABILITY IS ASSUMED FOR THE ACCURACY OF THE DATA SHOWN.

Assessor's Parcel Numbers Shown in Circles.
Assessor's Block Numbers Shown in Ellipses.

PORTOLA
Book 125, Page 26
Plumas County Assessor's Map

DRAWN BY GREGORY WITHROW
5/12/2003
REDRAWN BY CORY BROMBY
5/28/19