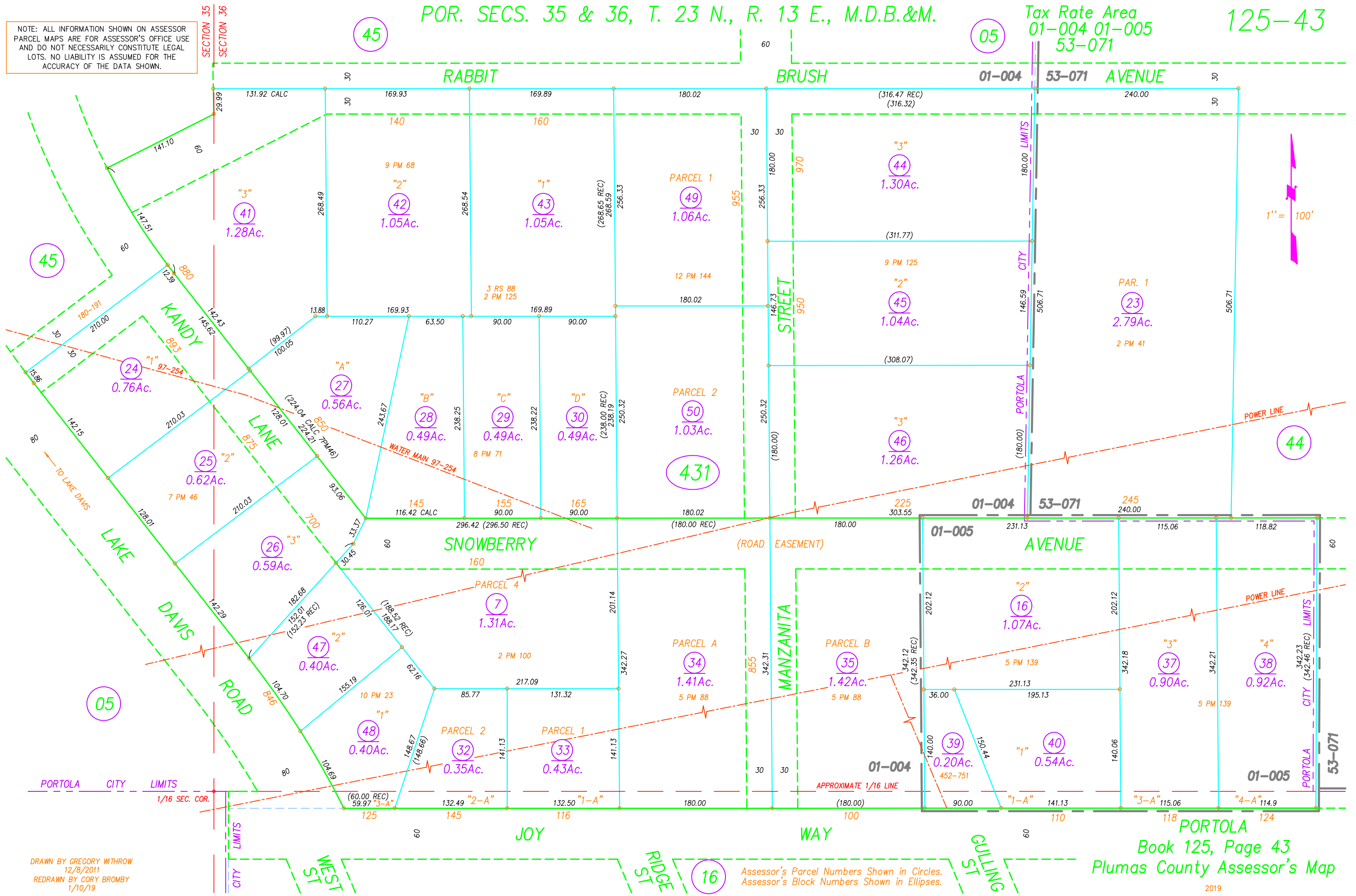


POR. SECS. 35 & 36, T. 23 N., R. 13 E., M.D.B.&M.

Tax Rate Area  
01-004 01-005  
53-071

125-43

NOTE: ALL INFORMATION SHOWN ON ASSESSOR  
PARCEL MAPS ARE FOR ASSESSOR'S OFFICE USE  
AND DO NOT NECESSARILY CONSTITUTE LEGAL  
LOTS. NO LIABILITY IS ASSUMED FOR THE  
ACCURACY OF THE DATA SHOWN.



1" = 100'

DRAWN BY GREGORY WITROW  
12/8/2011  
REDRAWN BY CORY BROMBY  
1/10/19

Assessor's Parcel Numbers Shown in Circles.  
Assessor's Block Numbers Shown in Ellipses.

Book 125, Page 43  
Plumas County Assessor's Map