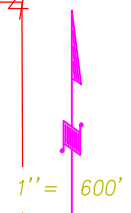
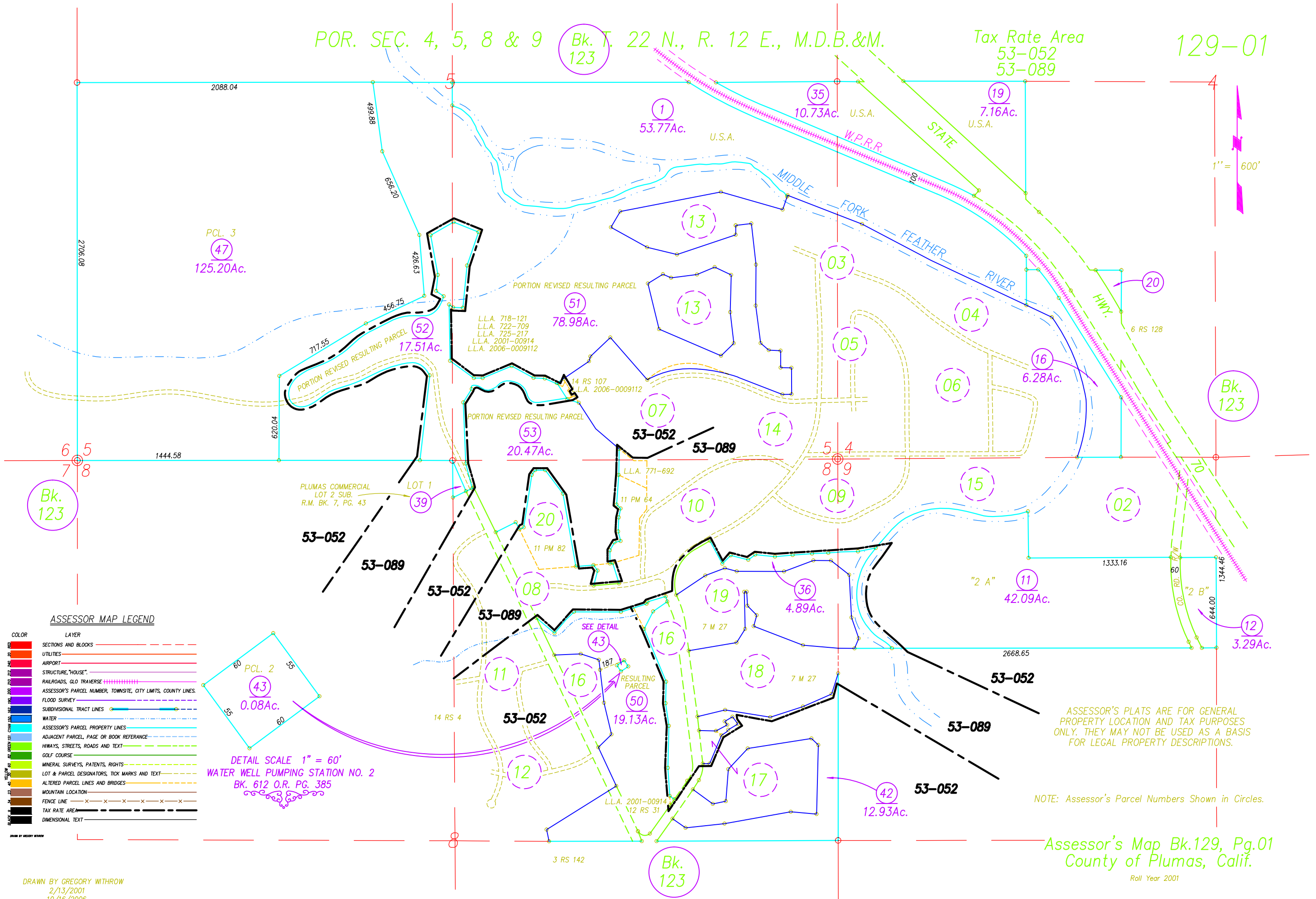


POR. SEC. 4, 5, 8 & 9 Bk. T. 22 N., R. 12 E., M.D.B.&M.

Tax Rate Area  
53-052  
53-089

129-01



**ASSESSOR MAP LEGEND**

COLOR	LAYER
Red	SECTIONS AND BLOCKS
Blue	UTILITIES
Black	AIRPORT
Black	STRUCTURE, "HOUSE"
Black	RAILROADS, GLO TRAVERSE
Black	ASSESSOR'S PARCEL NUMBER, TOWNSITE, CITY LIMITS, COUNTY LINES
Blue	FLOOD SURVEY
Blue	SUBDIVISIONAL TRACT LINES
Blue	WATER
Blue	ASSESSOR'S PARCEL PROPERTY LINES
Blue	ADJACENT PARCEL, PAGE OR BOOK REFERENCE
Green	HIWAYS, STREETS, ROADS AND TEXT
Green	GOLF COURSE
Green	MINERAL SURVEYS, PATENTS, RIGHTS
Green	LOT & PARCEL DESIGNATORS, TICK MARKS AND TEXT
Green	ALTERED PARCEL LINES AND BRIDGES
Green	MOUNTAIN LOCATION
Green	FENCE LINE
Green	TAX RATE AREA
Green	DIMENSIONAL TEXT

PCL. 2  
43  
0.08Ac.

DETAIL SCALE 1" = 60'  
WATER WELL PUMPING STATION NO. 2  
BK. 612 O.R. PG. 385

ASSESSOR'S PLATS ARE FOR GENERAL PROPERTY LOCATION AND TAX PURPOSES ONLY. THEY MAY NOT BE USED AS A BASIS FOR LEGAL PROPERTY DESCRIPTIONS.

NOTE: Assessor's Parcel Numbers Shown in Circles.

Assessor's Map Bk.129, Pg.01  
County of Plumas, Calif.  
Roll Year 2001