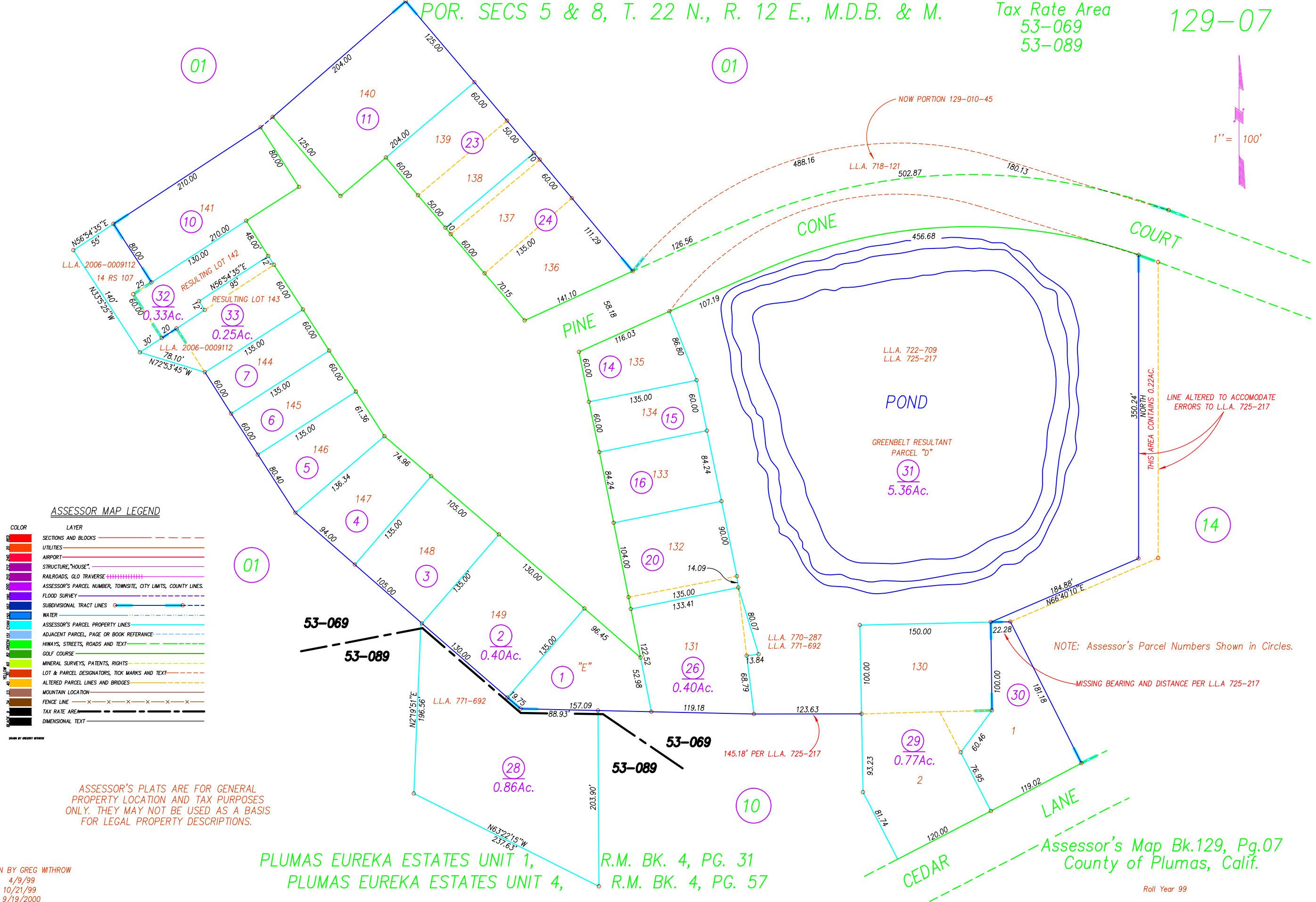


POR. SECS 5 & 8, T. 22 N., R. 12 E., M.D.B. & M.

Tax Rate Area
53-069
53-089

129-07



ASSESSOR MAP LEGEND

COLOR	LAYER
Red	SECTIONS AND BLOCKS
Orange	UTILITIES
Yellow	AIRPORT
Light Green	STRUCTURE, "HOUSE"
Dark Green	RAILROADS, GLO TRAVERSE
Blue	ASSESSOR'S PARCEL NUMBER, TOWNSHIP, CITY LIMITS, COUNTY LINES.
Light Blue	FLOOD SURVEY
Dark Blue	SUBDIVISIONAL TRACT LINES
Light Purple	WATER
Dark Purple	ASSESSOR'S PARCEL PROPERTY LINES
Light Cyan	ADJACENT PARCEL, PAGE OR BOOK REFERENCE
Dark Cyan	HIGHWAYS, STREETS, ROADS AND TEXT
Light Green	GOLF COURSE
Dark Green	MINERAL SURVEYS, PATENTS, RIGHTS
Light Green	LOT & PARCEL DESIGNATORS, TICK MARKS AND TEXT
Dark Green	ALTERED PARCEL LINES AND BRIDGES
Light Green	MOUNTAIN LOCATION
Dark Green	FENCE LINE
Light Green	TAX RATE AREA
Dark Green	DIMENSIONAL TEXT

ASSESSOR'S PLATS ARE FOR GENERAL PROPERTY LOCATION AND TAX PURPOSES ONLY. THEY MAY NOT BE USED AS A BASIS FOR LEGAL PROPERTY DESCRIPTIONS.

PLUMAS EUREKA ESTATES UNIT 1, R.M. BK. 4, PG. 31
PLUMAS EUREKA ESTATES UNIT 4, R.M. BK. 4, PG. 57

Assessor's Map Bk.129, Pg.07
County of Plumas, Calif.

DRAWN BY GREG WITHROW
4/9/99
10/21/99
9/19/2000
10/16/2006

Roll Year 99