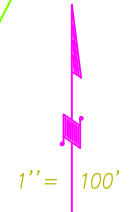
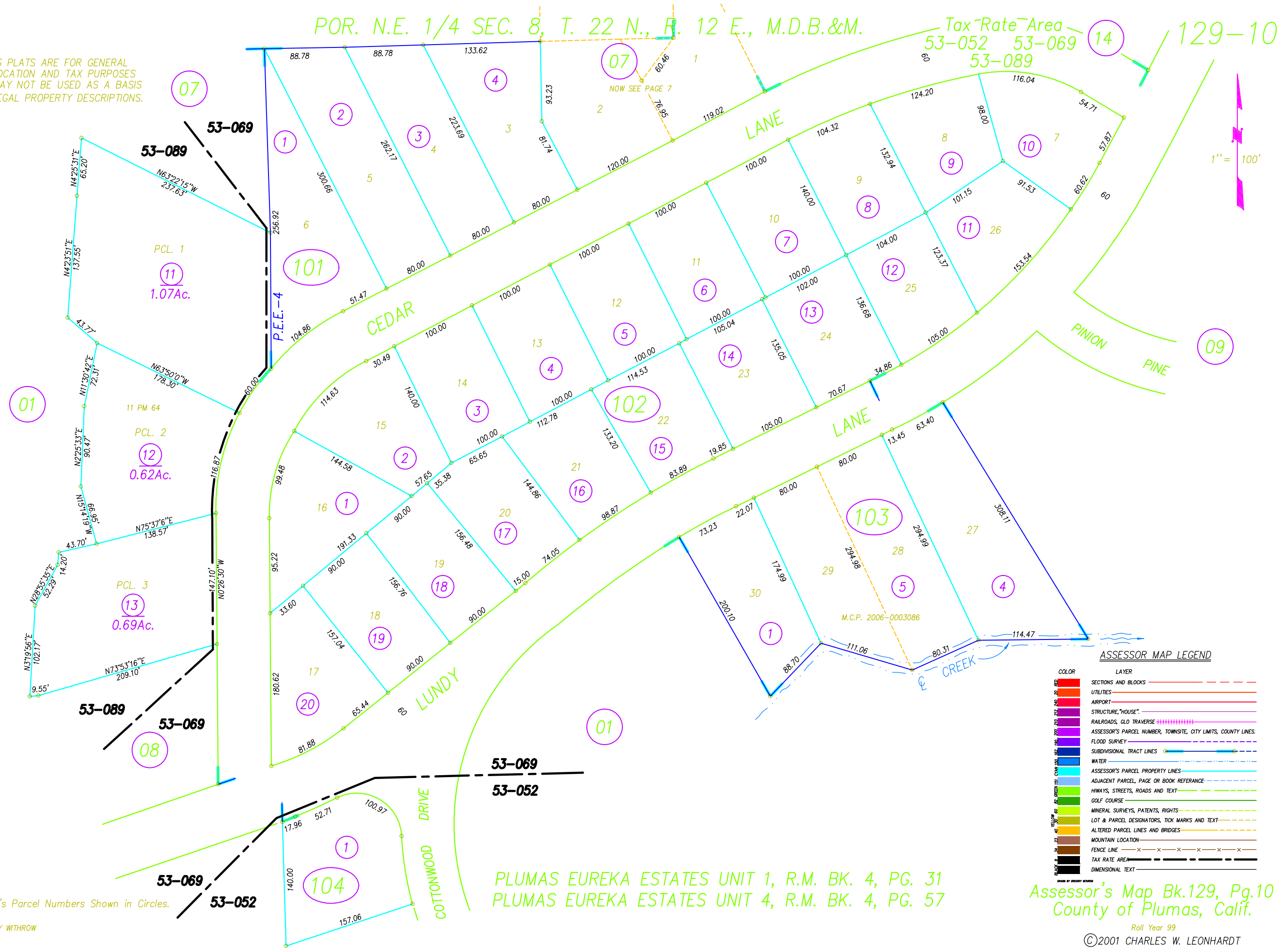


POR. N.E. 1/4 SEC. 8, T. 22 N., R. 12 E., M.D.B.&M.

Tax Rate Area 14
53-052 53-069 53-089 129-10

ASSESSOR'S PLATS ARE FOR GENERAL PROPERTY LOCATION AND TAX PURPOSES ONLY. THEY MAY NOT BE USED AS A BASIS FOR LEGAL PROPERTY DESCRIPTIONS.



ASSESSOR MAP LEGEND

COLOR	LAYER
Red	SECTIONS AND BLOCKS
Orange	UTILITIES
Yellow	AIRPORT
Green	STRUCTURE, "HOUSE"
Blue	RAILROADS, GLO TRAVERSE
Purple	ASSESSOR'S PARCEL NUMBER, TOWNSHIP, CITY LIMITS, COUNTY LINES
Light Blue	FLOOD SURVEY
Dark Blue	SUBDIVISIONAL TRACT LINES
Light Green	WATER
Light Blue	ASSESSOR'S PARCEL PROPERTY LINES
Light Blue	ADJACENT PARCEL, PAGE OR BOOK REFERENCE
Light Green	HIWAYS, STREETS, ROADS AND TEXT
Light Green	GOLF COURSE
Light Green	MINERAL SURVEYS, PATENTS, RIGHTS
Light Green	LOT & PARCEL DESIGNATORS, TICK MARKS AND TEXT
Light Green	ALTERED PARCEL LINES AND BRIDGES
Light Green	MOUNTAIN LOCATION
Light Green	FENCE LINE
Light Green	TAX RATE AREA
Light Green	DIMENSIONAL TEXT

NOTE: Assessor's Parcel Numbers Shown in Circles.

DRAWN BY GREGORY WITHROW 10/21/99

PLUMAS EUREKA ESTATES UNIT 1, R.M. BK. 4, PG. 31
PLUMAS EUREKA ESTATES UNIT 4, R.M. BK. 4, PG. 57

Assessor's Map Bk.129, Pg.10
County of Plumas, Calif.

Roll Year 99
©2001 CHARLES W. LEONHARDT