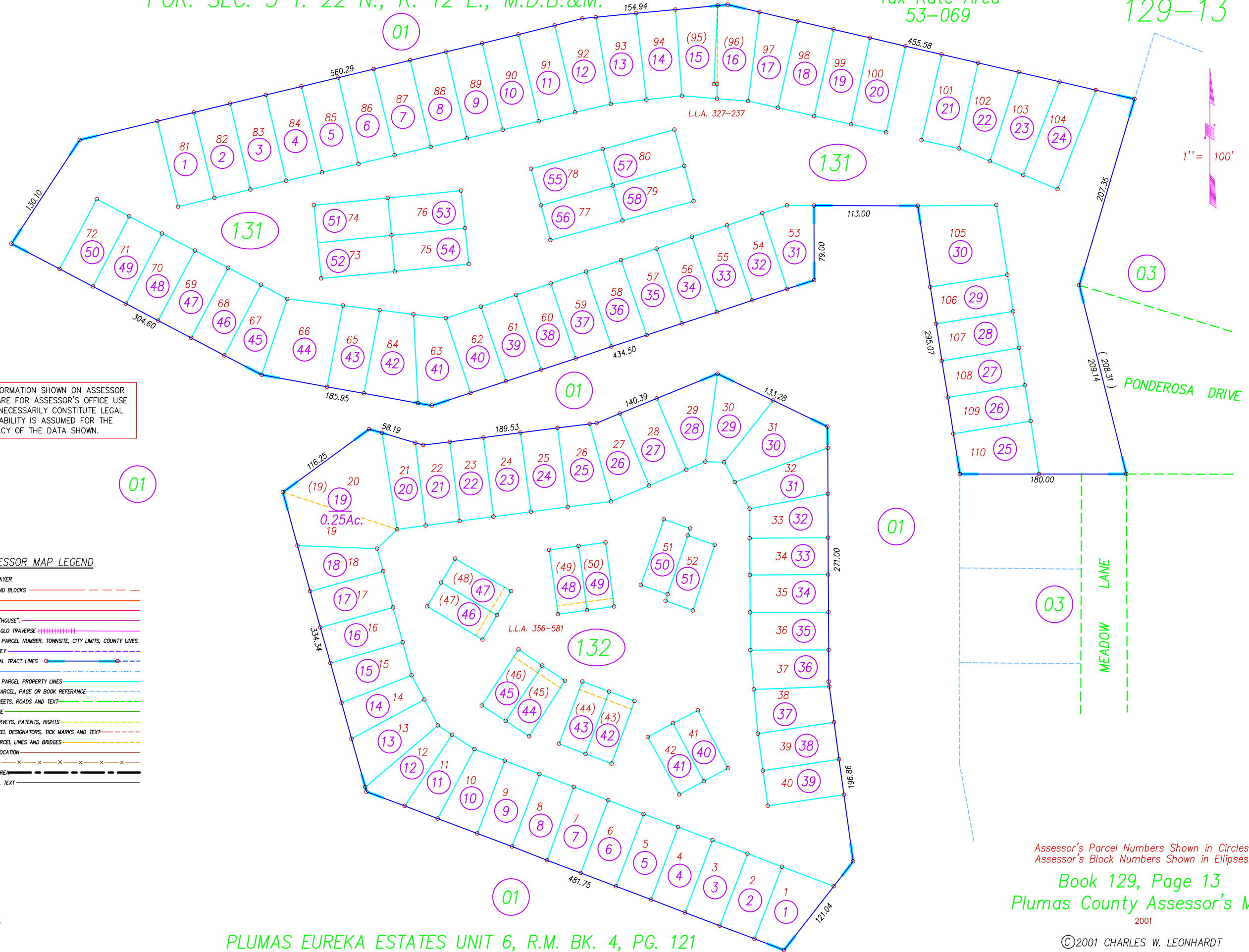


POR. SEC. 5 T. 22 N., R. 12 E., M.D.B.&M.

Tax Rate Area  
53-069

129-13



NOTE: ALL INFORMATION SHOWN ON ASSESSOR  
PARCEL MAPS ARE FOR ASSESSOR'S OFFICE USE  
AND DO NOT NECESSARILY CONSTITUTE LEGAL  
LOTS. NO LIABILITY IS ASSUMED FOR THE  
ACCURACY OF THE DATA SHOWN.

**ASSESSOR MAP LEGEND**

COLOR	LAYER
Red	SECTIONS AND BLOCKS
Orange	UTILITIES
Yellow	AIRPORT
Green	STRUCTURE, "HOUSE"
Blue	RAILROADS, GLO TRAVERSE
Purple	ASSESSOR'S PARCEL NUMBER, TOWNSHIP, CITY LIMITS, COUNTY LINES
Light Blue	FLOOD SURVEY
Dark Blue	SUBDIVISIONAL TRACT LINES
Light Green	WATER
Light Cyan	ASSESSOR'S PARCEL PROPERTY LINES
Light Blue	ADJACENT PARCEL, PAGE OR BOOK REFERENCE
Light Green	HIWAYS, STREETS, ROADS AND TEXT
Light Green	GOLF COURSE
Light Green	MINERAL SURVEYS, PATENTS, RIGHTS
Light Green	LOT & PARCEL DESIGNATORS, TICK MARKS AND TEXT
Light Green	ALTERED PARCEL LINES AND BRIDGES
Light Green	MOUNTAIN LOCATION
Light Green	FENCE LINE
Light Green	TAX RATE AREA
Light Green	DIMENSIONAL TEXT

DRAWN BY GREGORY WITROW  
12/7/2001

PLUMAS EUREKA ESTATES UNIT 6, R.M. BK. 4, PG. 121

Assessor's Parcel Numbers Shown in Circles.  
Assessor's Block Numbers Shown in Ellipses.  
Book 129, Page 13  
Plumas County Assessor's Map  
2001

©2001 CHARLES W. LEONHARDT