

**BLAIRSDEN-GRAEAGLE ROAD BRIDGE  
NO. 09C-0134 OVER FEATHER RIVER  
REPLACEMENT PROJECT**

**Area of Potential Effects Map Approved by:**

*Wayne Wain* for CH







Cassandra Hensher  
POS - Principal Investigator - Prehistoric Archeology  
Caltrans D2, Office of Local Assistance

2/22/17  
Date

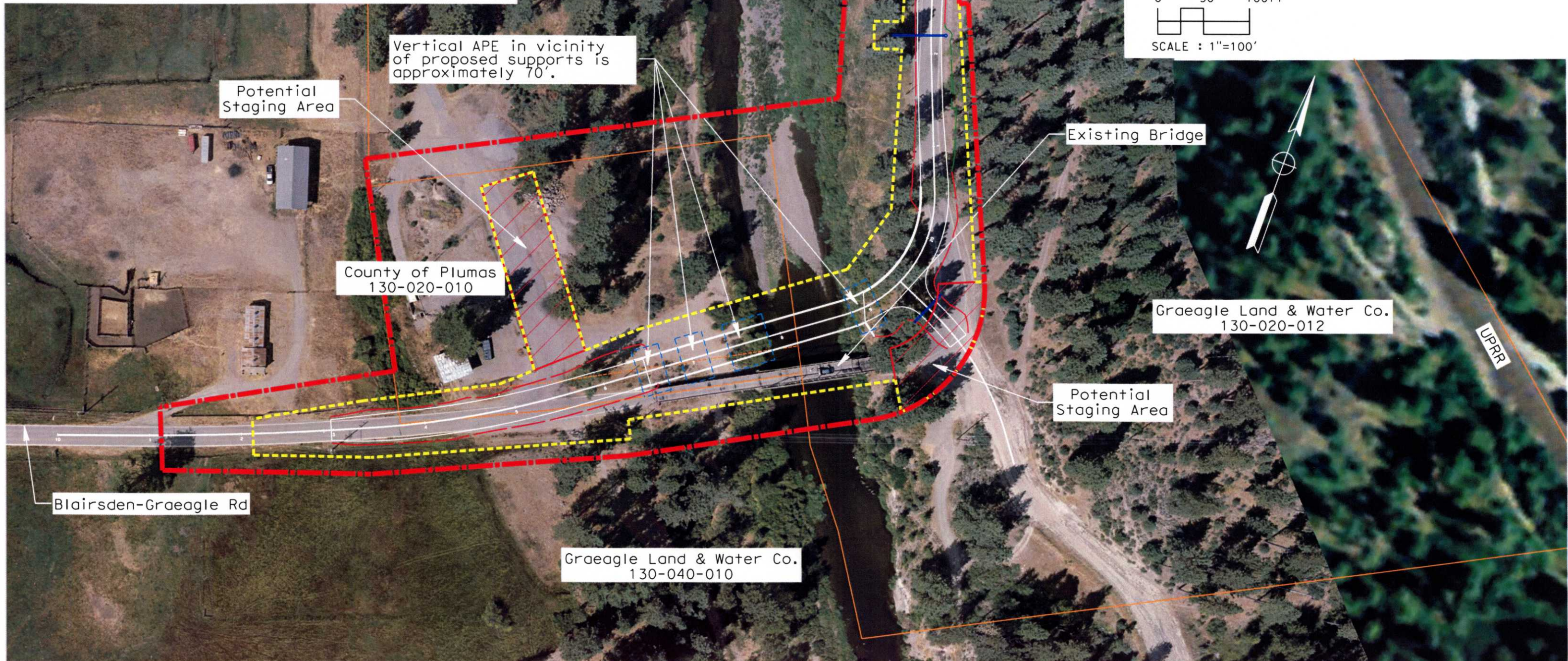
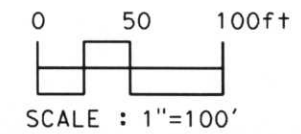
*Jan Howat*

Jan Howat P.E., Chief  
District of Local Assistance Engineer  
Caltrans D2, Office of Local Assistance

02.22.2012  
Date

-  AREA OF POTENTIAL EFFECTS (APE)
-  TEMPORARY CONSTRUCTION EASEMENT
-  PARCEL BOUNDARY
-  COUNTY ROAD EASEMENT
-  TOE OF FILL / TOP OF CUT
-  LIMITS OF BORING LOCATIONS

ARCHEOLOGICAL - Prehistoric and Historic  
The Area of Potential Effects includes all existing (and proposed) Right of Way and temporary construction easements. APE encompasses all Alternatives.



Vertical APE in vicinity of proposed supports is approximately 70'.

Potential Staging Area

County of Plumas  
130-020-010

Existing Bridge

Graeagle Land & Water Co.  
130-020-012

Potential Staging Area

Blairsdan-Graeagle Rd

Graeagle Land & Water Co.  
130-040-010

UPRR