

I, John Donnenwirth, County Clerk and ex-officio Clerk of the Board of Supervisors of the County of Plumas, State of California, hereby certify that at a regular meeting of said Board held on this date approved this map and accepted on behalf of the public all parcels of land shown thereon as offered for public use in conformity with the terms of the offer of dedication

Witness my hand and seal this 27th day of July 1946

John Donnenwirth
County Clerk and ex-officio Clerk of the Board of Supervisors of the County of Plumas, State of California

I, A.J. Watson, County Surveyor of Plumas County, California and a registered Civil Engineer of the State of California in May June 1946 I surveyed the lands shown on this map that permanent monuments where established as indicated thereon and that the same is technically correct Said lands are situated in the NE 1/4 of SE 1/4, N 1/2 of SE 1/4 of SE 1/4 of Section 11, NW 1/4 of SW 1/4 of SW 1/4 and SW 1/4 of NW 1/4 of SW 1/4 of Section 12 T. 27 N. R. 7 E. M. D. M.

June 28th 1946. *A. J. Watson* CE # 2554

This is to certify that Frank Wilson and Nettie Wilson are the sole owners of the tract of land subdivided and shown on this map

And this is to further certify that Frank Wilson and Nettie Wilson hereby consents to the preparation and recording of this map and hereby dedicates to public use all parcels of land shown on said map as streets or alleys

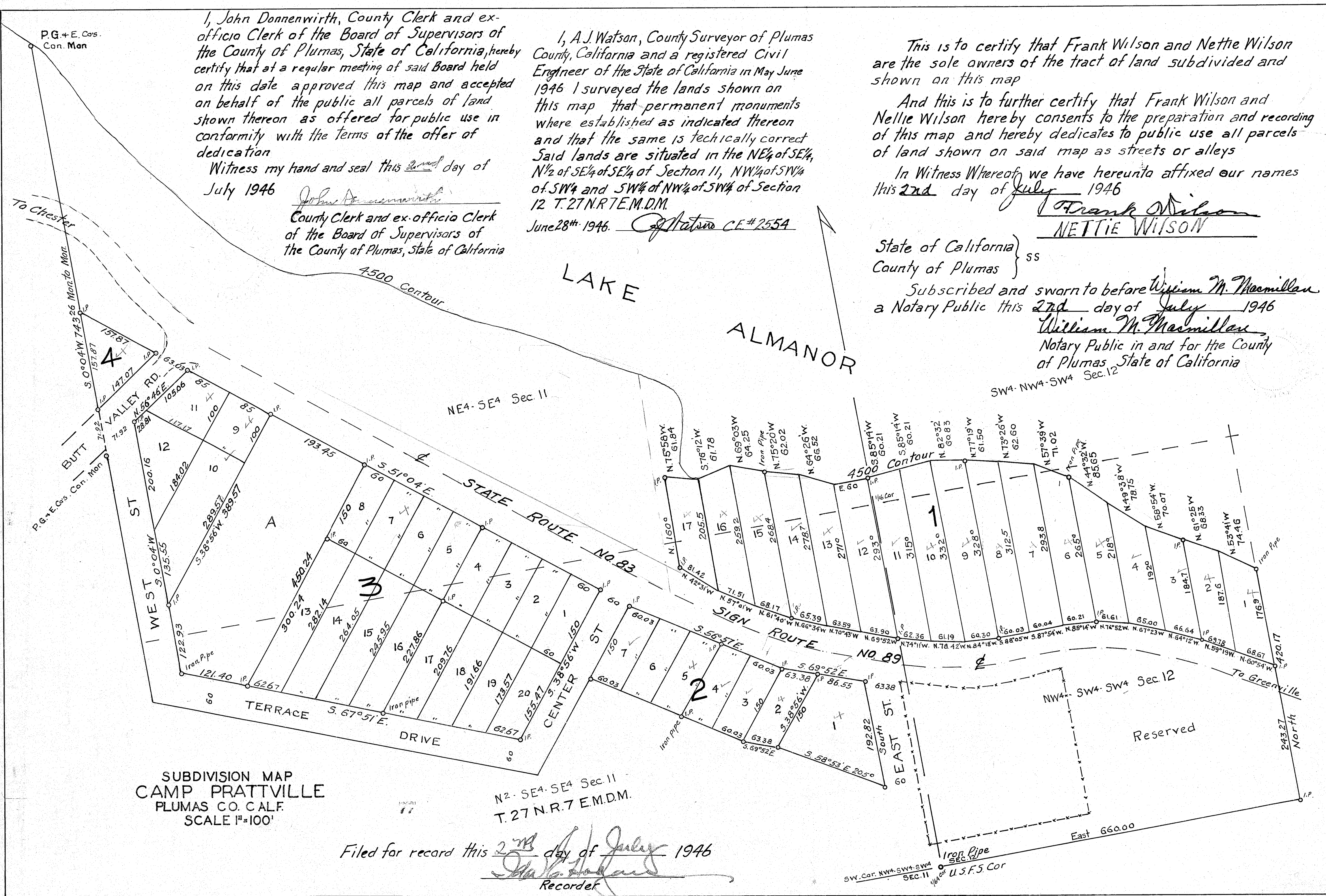
In Witness Whereof we have hereunto affixed our names this 27th day of July 1946

Frank Wilson
NETTIE WILSON

State of California }
County of Plumas } ss

Subscribed and sworn to before *William M. Macmillan* a Notary Public this 27th day of July 1946

William M. Macmillan
Notary Public in and for the County of Plumas State of California



SUBDIVISION MAP
CAMP PRATTVILLE
PLUMAS CO. CALF.
SCALE 1"=100'

N 2 - SE 4 - SE 4 Sec. 11
T. 27 N. R. 7 E. M. D. M.

Filed for record this 27th day of July 1946

A. J. Watson
Recorder