

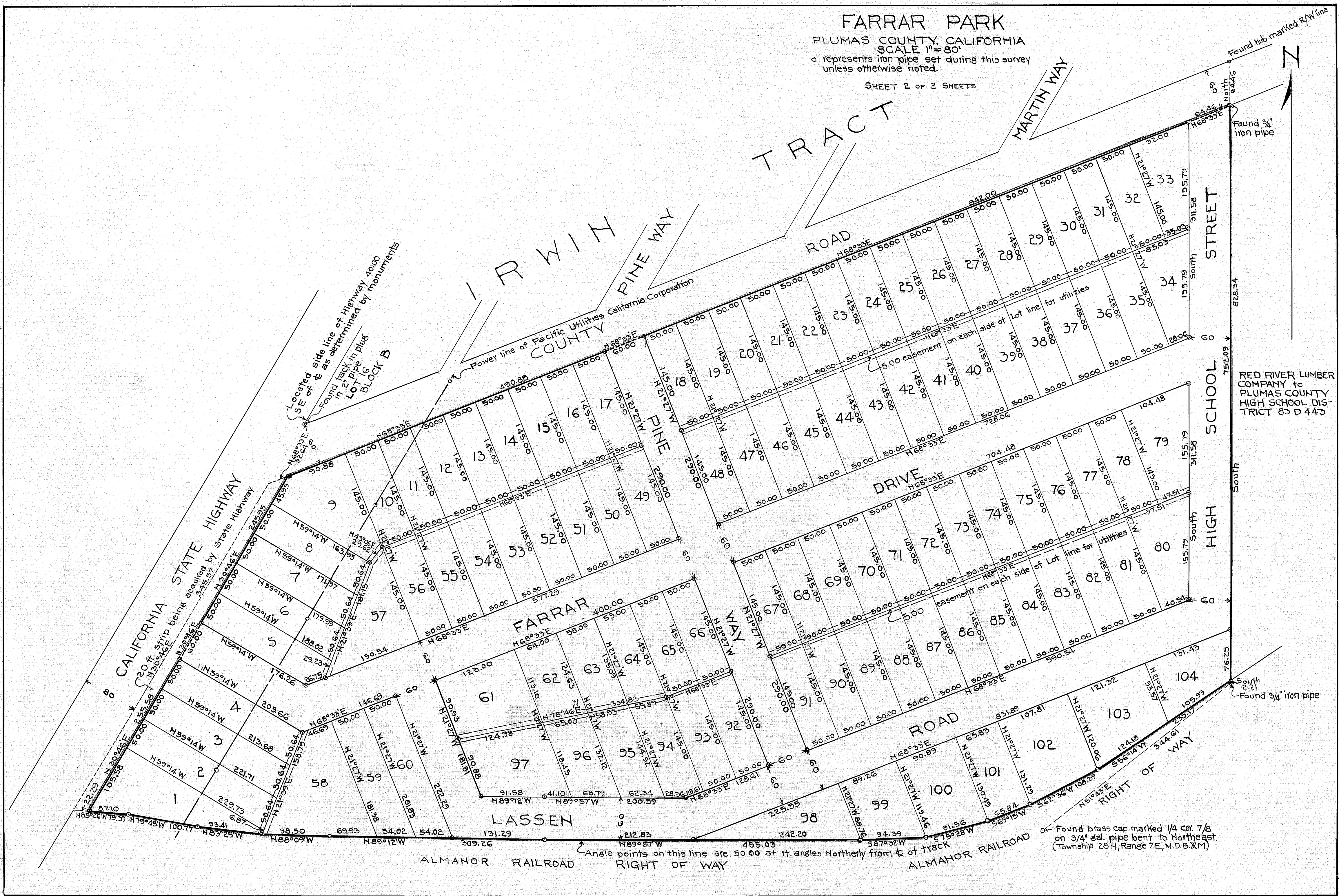
FARRAR PARK

PLUMAS COUNTY, CALIFORNIA
SCALE 1"=80'

o represents iron pipe set during this survey unless otherwise noted.

SHEET 2 OF 2 SHEETS

TRACT



Located side line of Highway 40.00
SE of & as determined by monuments
Found track in plus
Lot 16
BLOCK B

Power line of Pacific Utilities California Corporation

RED RIVER LUMBER COMPANY to
PLUMAS COUNTY
HIGH SCHOOL DISTRICT 83 D 443

Found brass cap marked 1/4 cor. 7/8
on 3/4" d. pipe bent to Northeast.
(Township 28 N, Range 7 E, M.D.B. & M.)

ALMANOR RAILROAD RIGHT OF WAY