

NW 1/4 SW 1/4

NE 1/4 SW 1/4

R=1000'
Δ=15°35'37"
T=136.92'
L=272.16'

R=300'
Δ=38°34'07"
L=201.94'

NW Corner
SW 1/4 of the SW 1/4
Sec. 17
T28N, R8E
MDM.

④

③

②

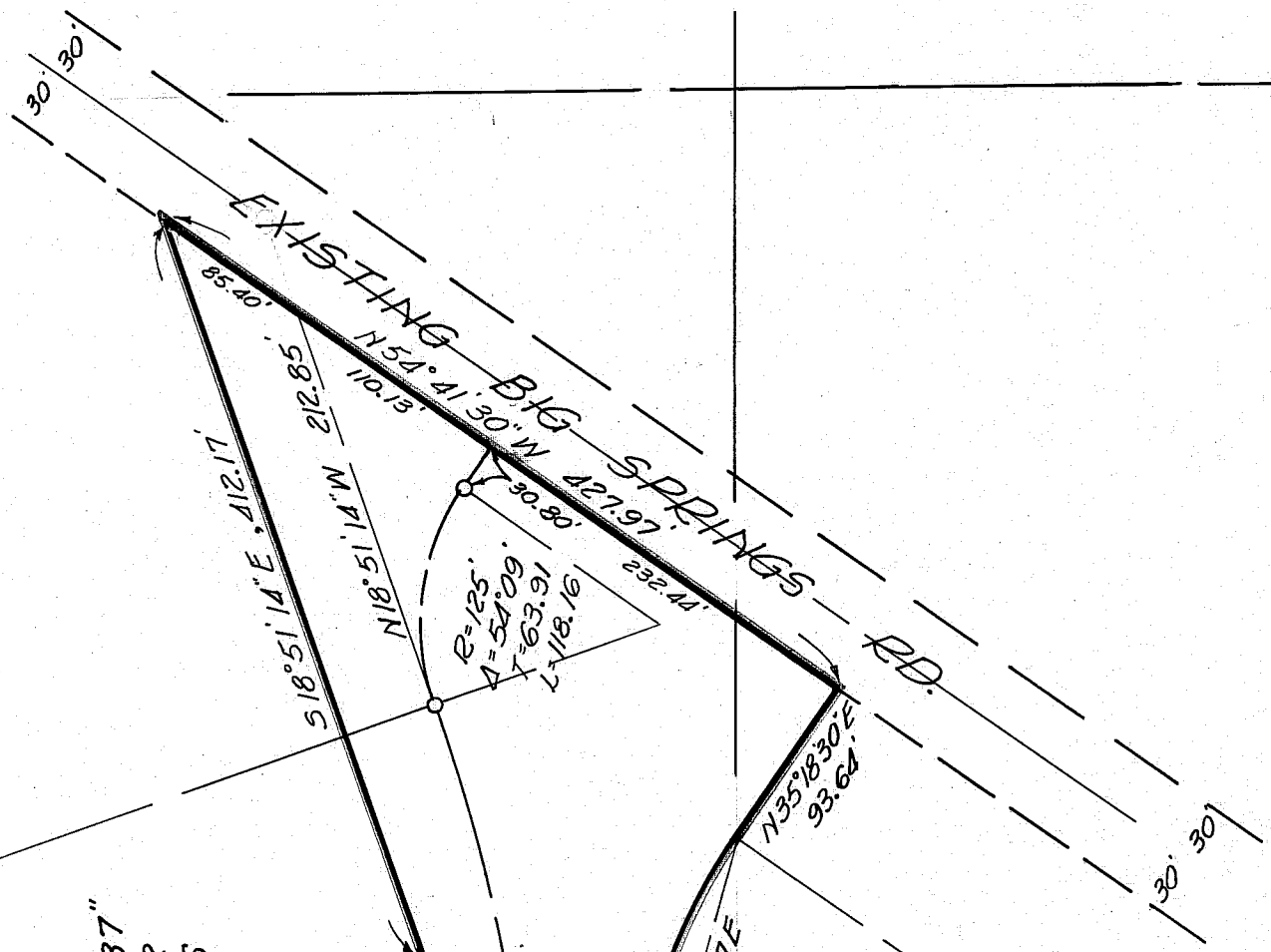
①

N89°43'43"E, 1228.43'

N89°43'43"E, 275.67'

N89°43'43"E, 469.98'

R=1000'
Δ=15°11'57"
L=265.18'
T=133.37'



ALMANOR DRIVE