

2273

CERTIFICATE OF COUNTY RECORDER

Accepted for Record and Recorded on Page 139 Book I Record of Surveys
in the Office of the County Recorder of Plumas County
this 12th Day of April 1957

Edw. Hogan

County Recorder, County of Plumas, California

Loren J. Sargent

SURVEY FOR T.S. WALKER ETAL.

IN SEC. 31, 32, 33 - T.29 N. R.7 E. M.D.M.
PLUMAS COUNTY, CALIFORNIA

Scale 1 inch = 800 feet

⊙ Shows Corners Found ○ Shows Corners Set and Tagged L.S. 2322

LOREN J. SARGENT L.S. 2322

SHASTA FORESTS CO.

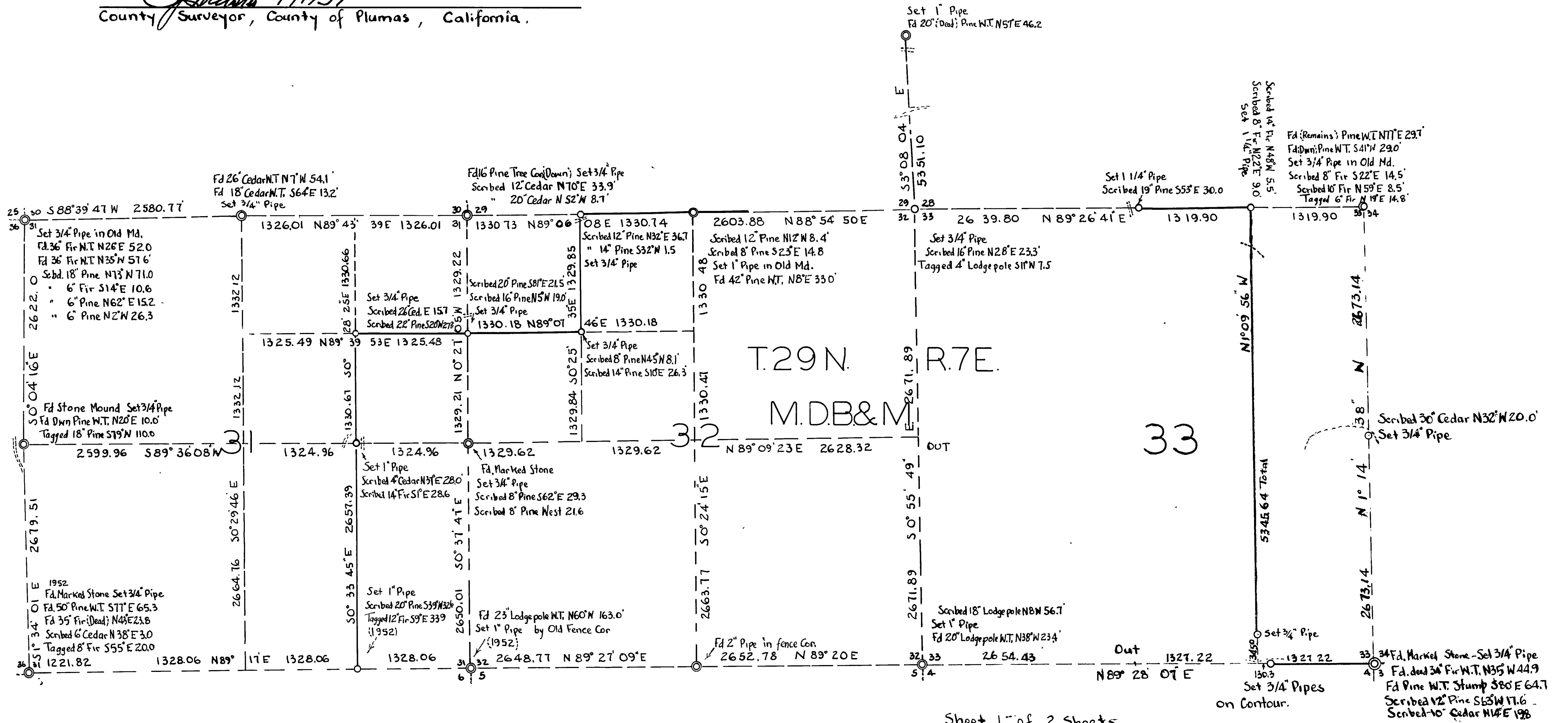
Feb. 1957

CERTIFICATE OF COUNTY SURVEYOR

I hereby certify that the Procedure and Mathematics
Shown on this Map are Correct.

Loren J. Sargent 4/11/57

County Surveyor, County of Plumas, California.



Sheet 1 of 2 Sheets

Bearings are from 1928 G.L.D. Survey Sec 8 T 28 N R 7 E.