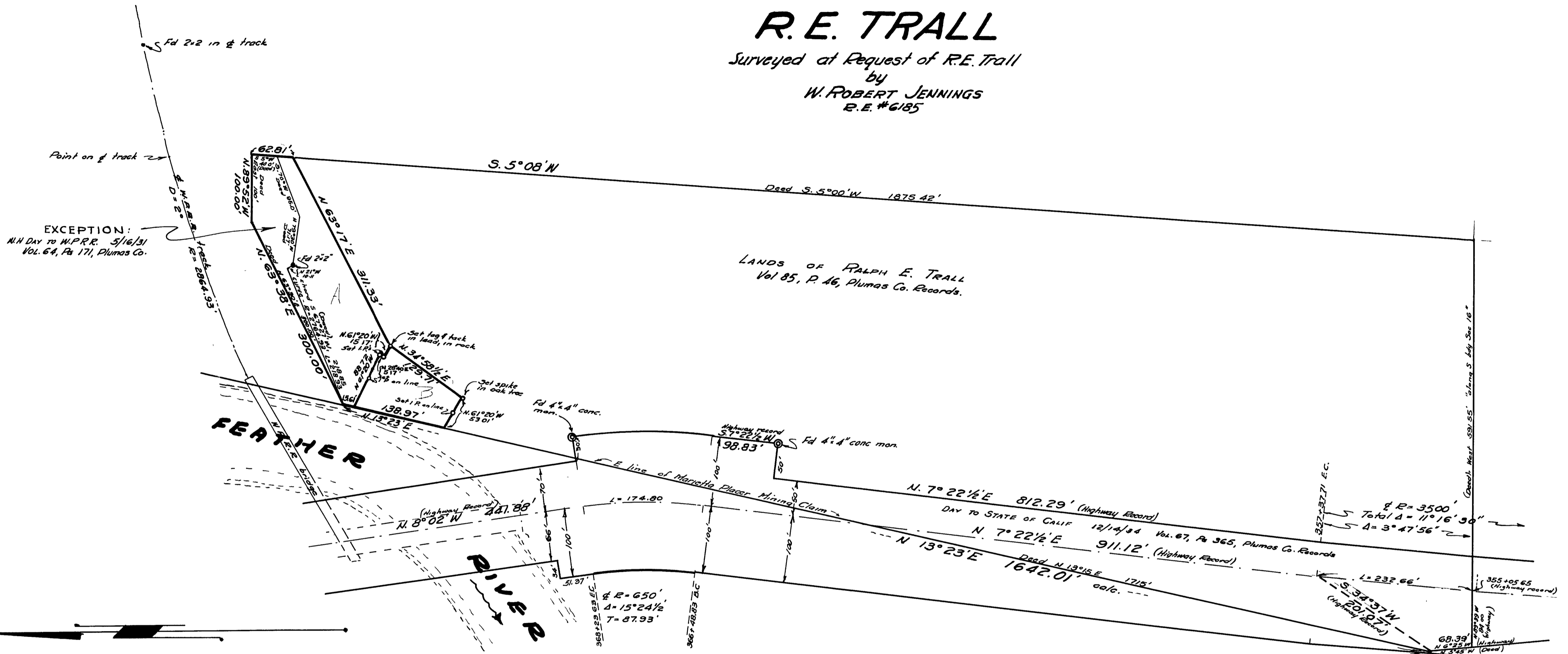


RECORD OF SURVEY OF LANDS OF R. E. TRALL

Surveyed at Request of R. E. Trall
by
W. ROBERT JENNINGS
R. E. #6185

LANDS OF RALPH E. TRALL
Vol 85, P. 46, Plumas Co. Records.



EXCEPTION:
N.H. DAY TO W.P.R.R. 5/16/31
Vol. 64, P. 171, Plumas Co.

Scale: 1"=100'

The North end of the Trall property is established from the R.R. track, and from the 2"x2" stake found. The West corner (Coe 41° 43, Marietta Placer Claim) is established from the highway as given.

The basis of bearings of this map is the State Highway basis, as established by monuments found

All points set marked by copper discs stamped "RE 6185"

I, W. ROBERT JENNINGS hereby certify that I am a Registered Civil Engineer of the State of California; that this map correctly represents a survey made under my direction in October, 1950; and that all the monuments shown hereon actually exist and occupy the positions indicated

W. Robert Jennings
Reg. Civil Eng. #6185

I, A. J. Watson, County Surveyor of Plumas County, Calif. hereby certify that I have examined this map in accordance with the provisions of law.

A. J. Watson 1/2/51
R.C.E. #2554

FILED FOR RECORD THIS 2nd DAY OF JANUARY, 1951, AT 50 MINUTES PAST 3 P.M.

FEE: \$1.00
COUNTY RECORDER OF PLUMAS COUNTY
BY *John Hogan* DEPUTY

FILE #1409

1RS52