

OF A PORTION OF THE SOUTHEAST QUARTER OF THE NORTHEAST QUARTER, SECTION 27, T 25 N, R 9 E, MDM

PLUMAS COUNTY

CALIFORNIA

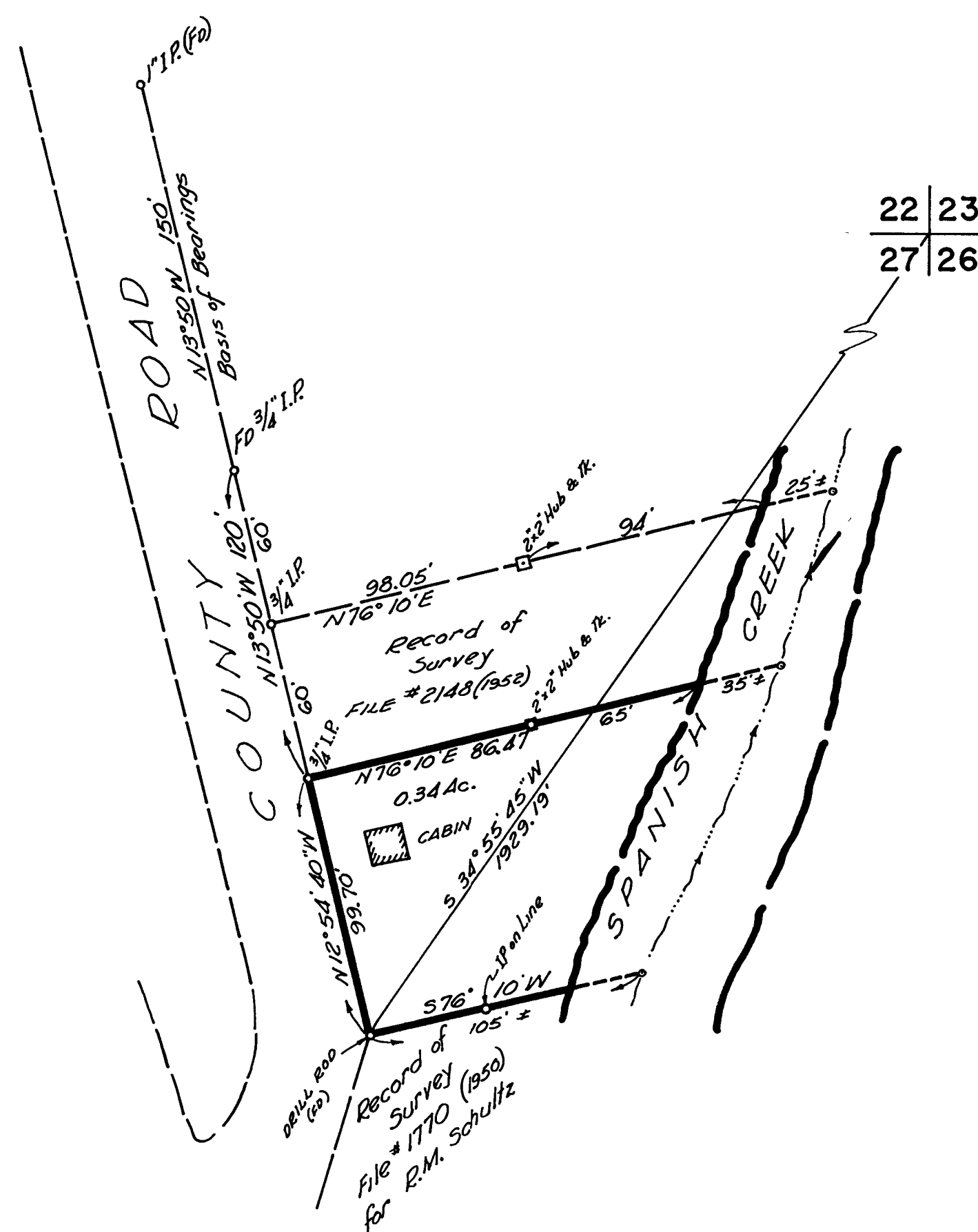
**CALIFORNIA**

SURVEYED AT THE REQUEST OF S.C. YOUNG, ATTORNEY

**JUNE, 1952**

SURVEYED BY RICHARD R. ECKER, L.S. 2587

Richard P. Chubb



I, A.J. Watson, County Surveyor of Plumas County, hereby certify that I have examined this map in accordance with the provisions of law.

6/23/52  
DATE

DATE \_\_\_\_\_

C. H. H. H.  
COUNTY SURVEYOR

COUNTY SURVEYOR

Basis of bearings as shown on monumented County Road R/W Line.

FILE NO. 2410

Filed at the request of Richard D. Ecker this  
24 day of June 1952 at 5 minutes past  
9 o'clock A.m.

Mark Logan  
PLUMAS COUNTY RECORDER

PLUMAS COUNTY RECORDS