

A PORTION OF THE NORTHEAST QUARTER, SECTION 24,
T24N, R9E, M.D.B. & M.

COUNTY OF PLUMAS

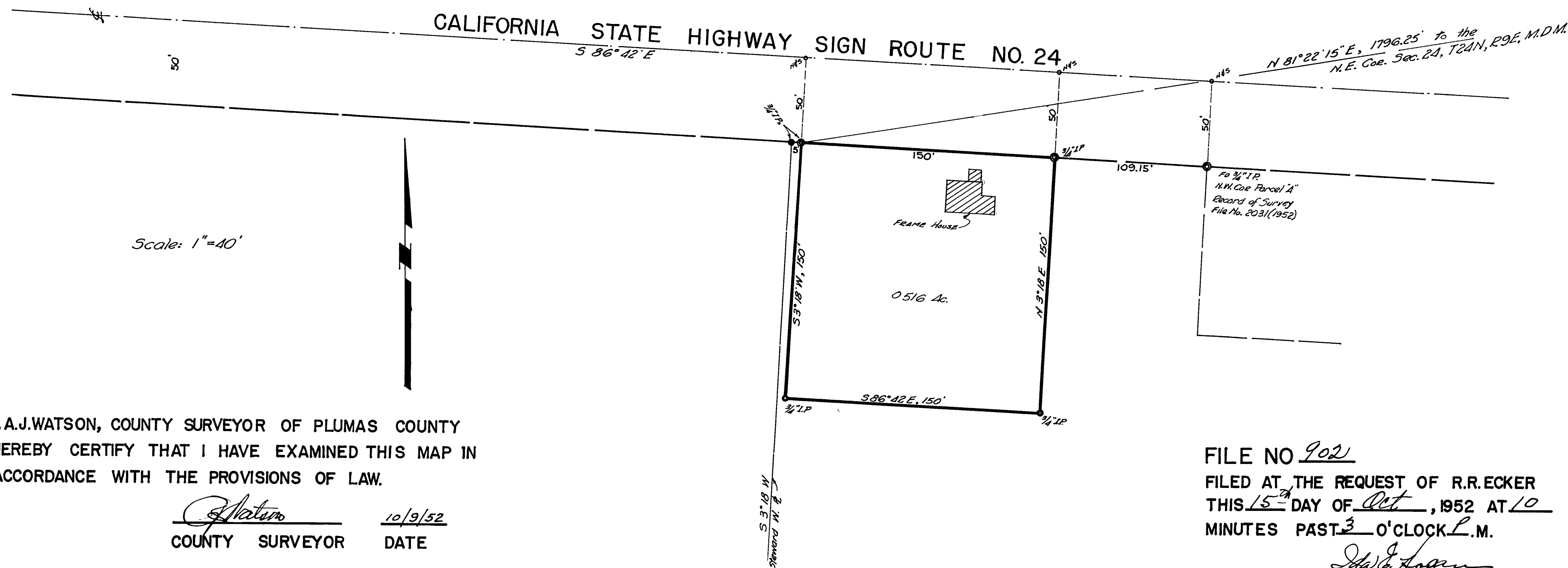
CALIFORNIA

SURVEYED AT THE REQUEST OF B.R. STEWARD

SURVEYED BY RICHARD R. ECKER, L.S. 2587

OCTOBER, 1952

BASIS OF BEARINGS DERIVED FROM THE MONUMENTED STATE HIGHWAY



IRS 92 12