

2270 CERTIFICATE OF COUNTY RECORDER
Accepted for Record and Recorded on Page 136 Book 1 RECORD OF SURVEYS

this 1st Day of APRIL 1957

County Recorder County of Plumas, State of Calif.

LEGEND

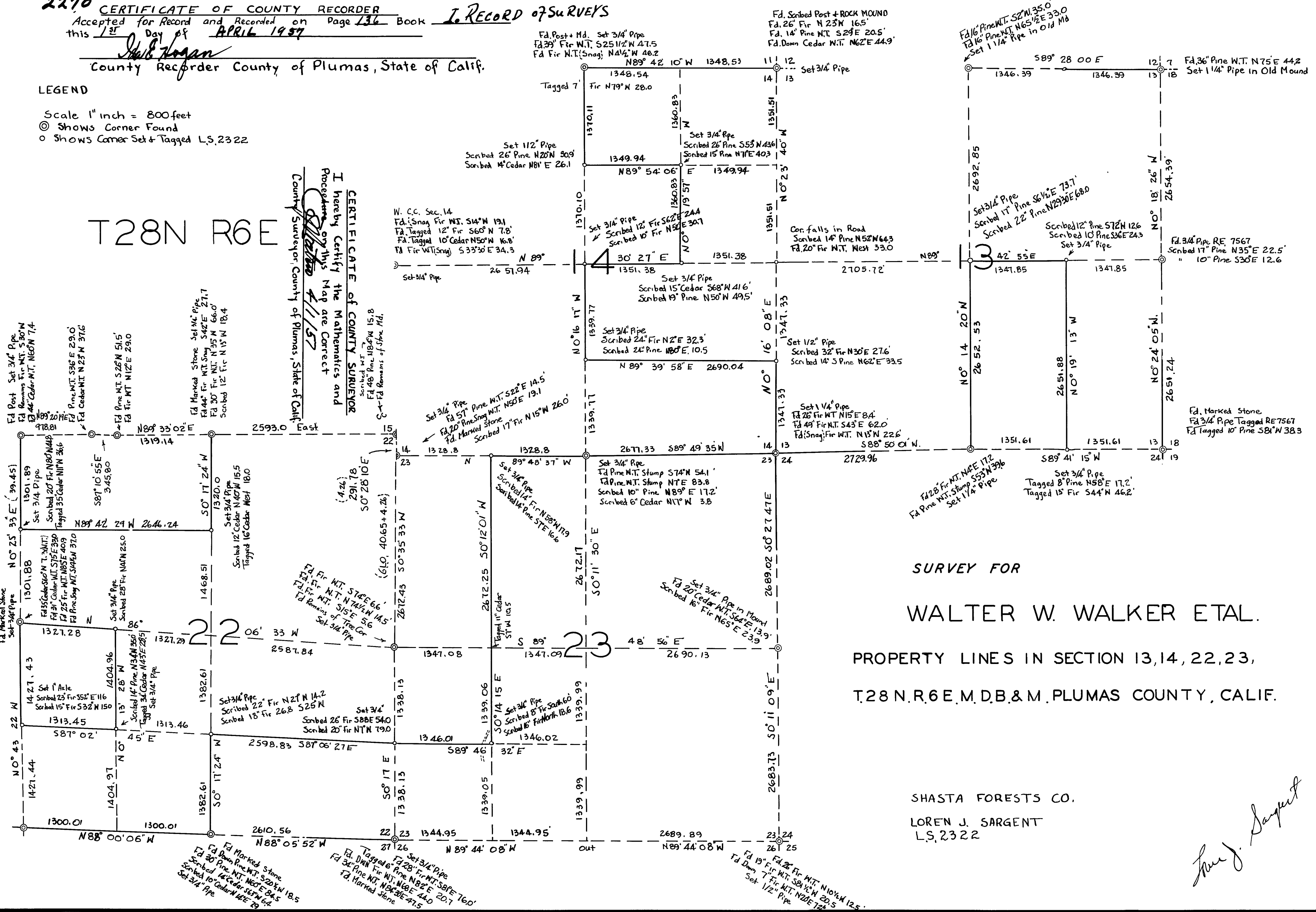
- Scale 1" inch = 800 feet
- ⊙ Shows Corner Found
- Shows Corner Set & Tagged L.S. 2322

T28N R6E

CERTIFICATE OF COUNTY SURVEYOR
I hereby certify the Mathematics and
Proceedings on this Map are Correct
4/11/57
County Surveyor, County of Plumas, State of Calif.

Bearings from Hwy. Tangent in Sec. 18 T28N R7E

Fd. Marked Stone, Set 3/4" Pipe
Fd. 38" Pine MT. N35 1/2° E 95.0
Fd. 29" Pine MT. N45° W 62.4
Fd. 39" Fir MT. S14° W 11.9



SURVEY FOR
WALTER W. WALKER ETAL.
PROPERTY LINES IN SECTION 13, 14, 22, 23,
T.28 N. R.6 E. M. D. B. & M. PLUMAS COUNTY, CALIF.

SHASTA FORESTS CO.
LOREN J. SARGENT
L.S. 2322

Loren J. Sargent