

MARTIN

Description of Summit Cemetery
Beginning at a point on the east line of Sec. 36,
T. 23 N. R. 16 E. M. D. M. distant 726.8 feet north of the south-
east corner of said section: Thence North on said east
line 47.5 feet; Thence N 88° 35' E. 47.5 feet; Thence
South 47.5 feet; Thence S 88° 35' W. 47.5 feet to the
place of beginning. Containing 4 acres.

PLAT OF SUMMIT CEMETERY

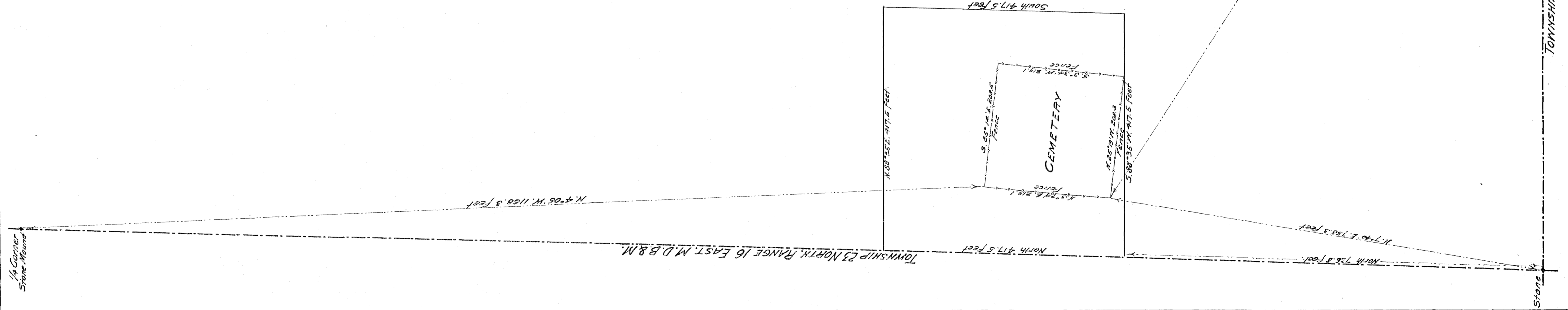
Chilcoot
Plumas County
Cal.

In unsurveyed Section 31, Township 23 North
Range 17 East, Mt. Diablo B. & M.

Surveyed by H.C. Maxon.

June 10th. 1910

Filed May 10th 1911
L. R. Campbell
County Recorder



TOWNSHIP 22 NORTH, RANGE 17 EAST, M.D.B. & M.

Post

Filed May 10th 1911

Filed May 10th 1911