

LITTLE GRASS VALLEY ESTATES NOTTINGHAM TRACT

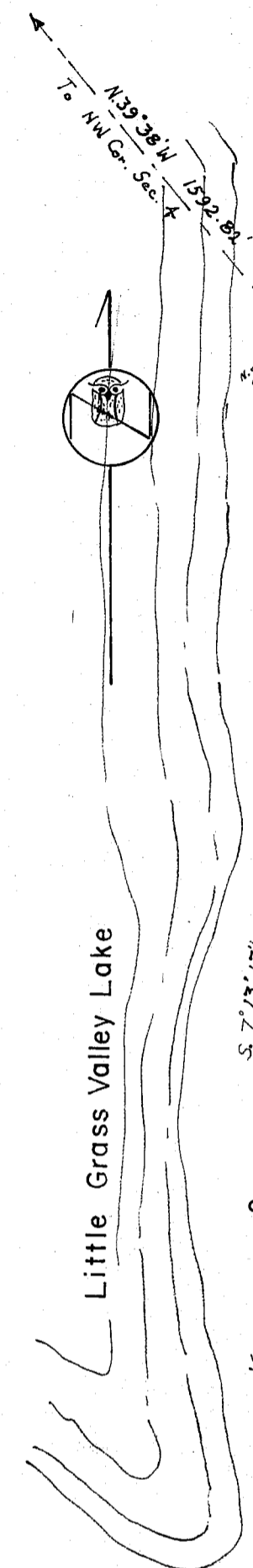
Portion of Section 4, Township 21 North, Range 9 East, M.D.B.&M.

Owner-Developer: **Soper - Wheeler Co.**
Strawberry Valley, California

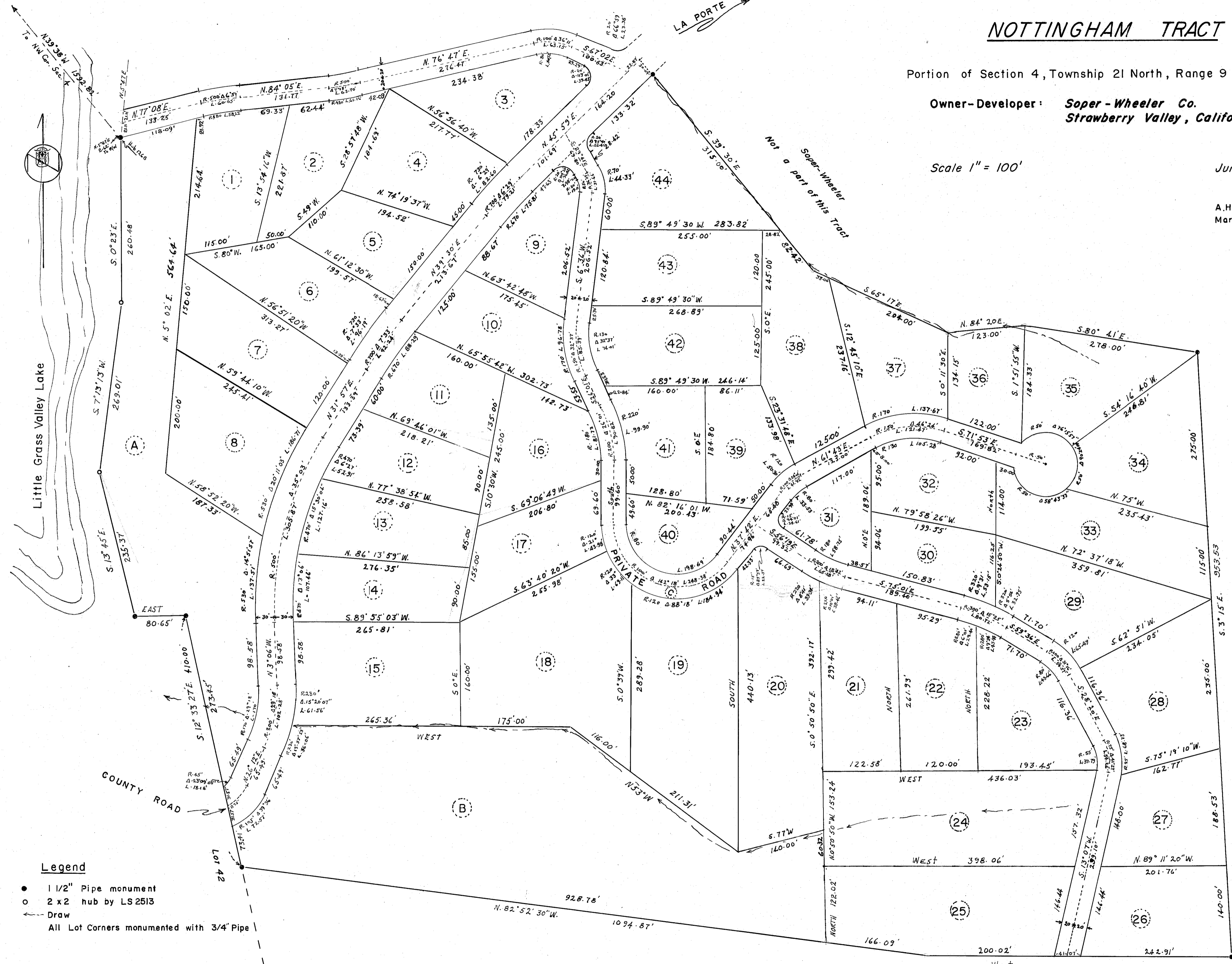
Scale 1" = 100'

June 1963

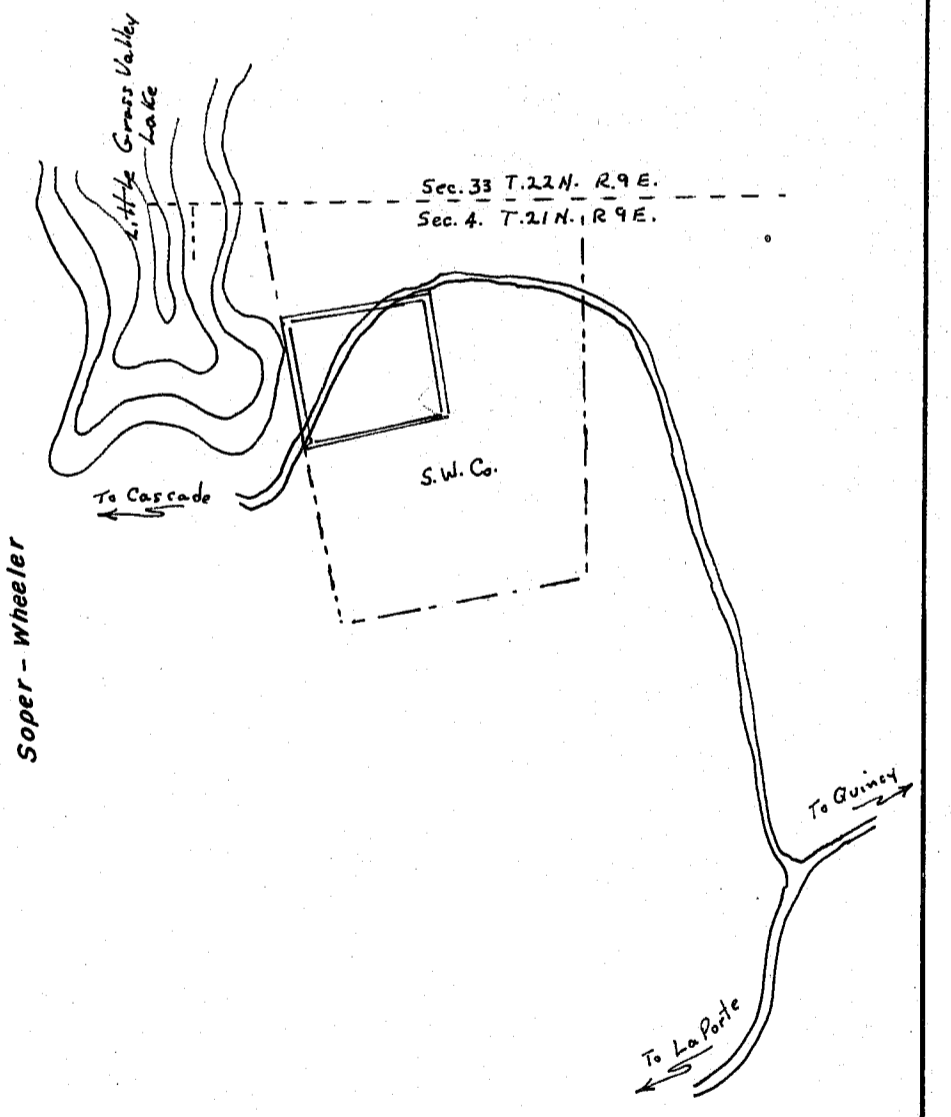
A.H.DeVoe, L.S.3079
Marysville, Calif.



Little Grass Valley Lake



LOCATION SKETCH



- Legend**
- 1 1/2" Pipe monument
 - 2 x 2 hub by LS2513
 - Draw
 - ← All Lot Corners monumented with 3/4" Pipe

Bearings from Survey by LS2513