

Plat of LA PORTE PILES COUNTRY CLUB

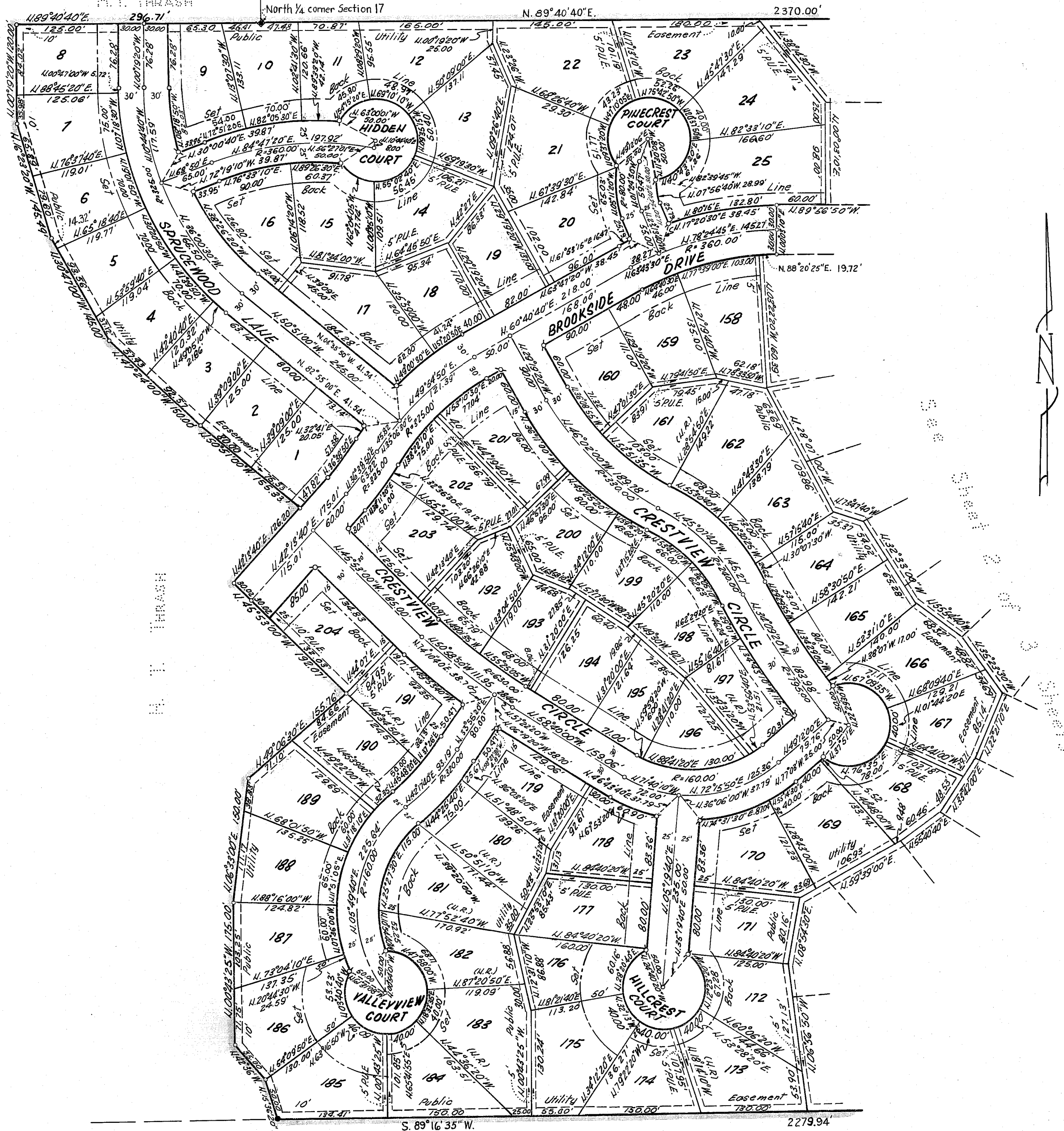
A Portion Of Section 17, T.21N, R.9E, M.D.M. Plumas County, California

H.T. THRASH

North 1/4 corner Section 17

U. S. Govt.

Raymond Vail, Civil Engineer
Scale: 1" = 100'
Sheet 3 of 3 Sheets



Scale: 1" = 100'

NOTES:





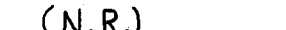
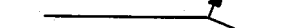

The meridian of this survey is identical with that of the California Coordinate System, Zone 2.

All radii shown are centerline radii unless otherwise noted.

All distances along curved lines are chord measurements.

All centerline intersections are marked with a 3/4" iron pipe.

LEGEND:

-  Public Utility Easement (P.U.E.)
-  Set Back Line
-  Drainage Easement Line
-  1/2" Iron pipe monument set, tagged R.C.E. 8850
- (N.R.)  Indicates line is not radial
-  Guy wire and anchorage easement
-  Found 1" galv. iron pipe monument with 2" driving head.

U. S. Govt.