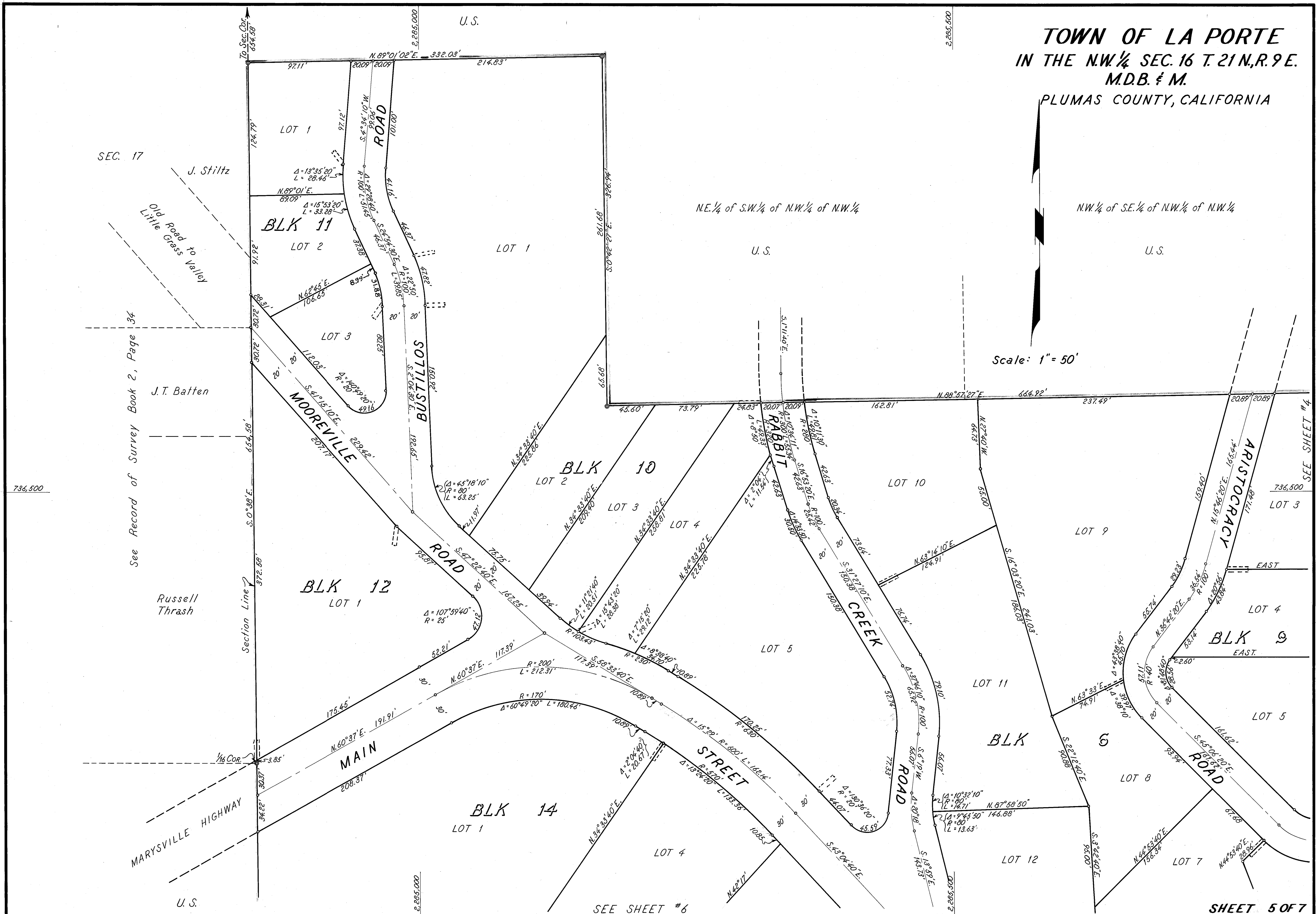


**TOWN OF LA PORTE**  
**IN THE N.W. 1/4 SEC. 16 T. 21 N., R. 9 E.**  
**M.D.B. & M.**  
**PLUMAS COUNTY, CALIFORNIA**

Scale: 1" = 50'



SEC. 17

J. Stiltz

Old Road to Valley  
Little Grass

J.T. Batten

See Record of Survey Book 2, Page 34

Russell Thrash

MARYSVILLE HIGHWAY

U.S.

N.E. 1/4 of S.W. 1/4 of N.W. 1/4 of N.W. 1/4

U.S.

N.W. 1/4 of S.E. 1/4 of N.W. 1/4 of N.W. 1/4

U.S.

SEE SHEET #4

LOT 3

EAST

LOT 4

BLK 9 EAST

LOT 5

LOT 8

LOT 7

BLK 6

LOT 12

SEE SHEET #6

SHEET 5 OF 7

2199