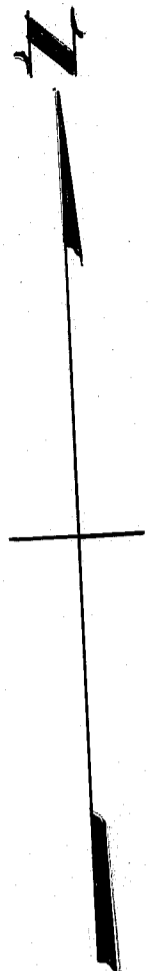
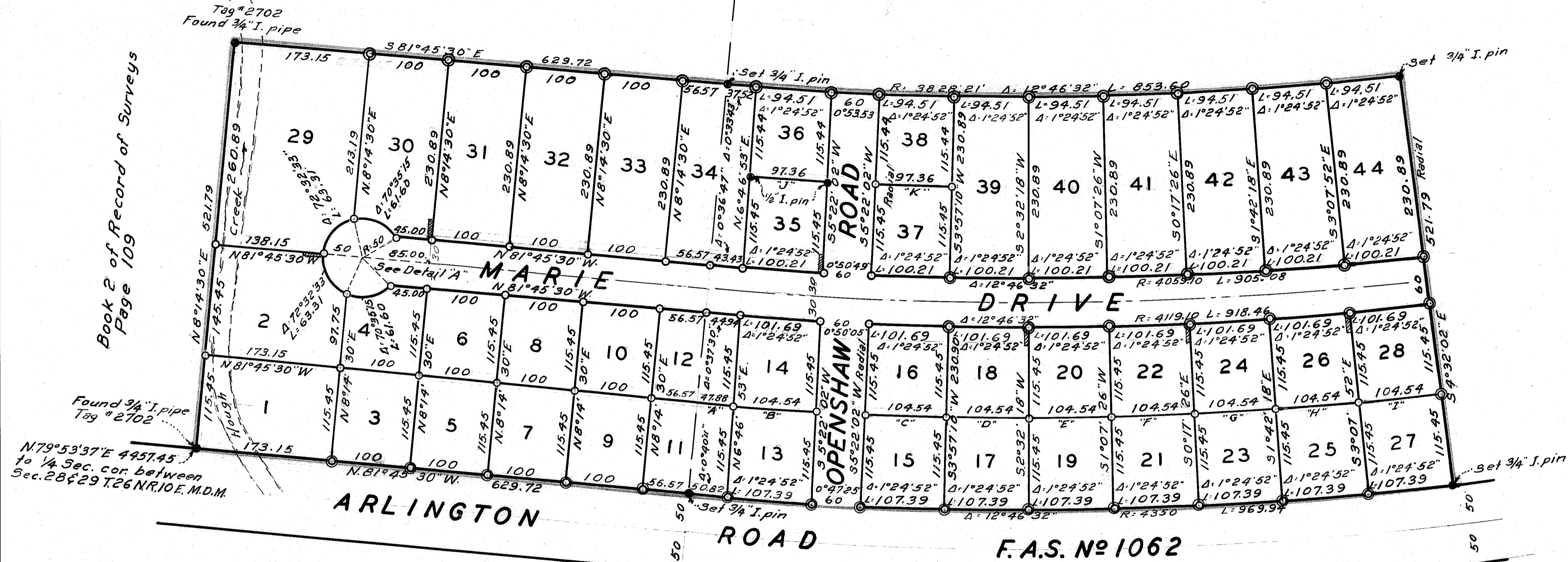


Book 2 of Record of Surveys
Page 109

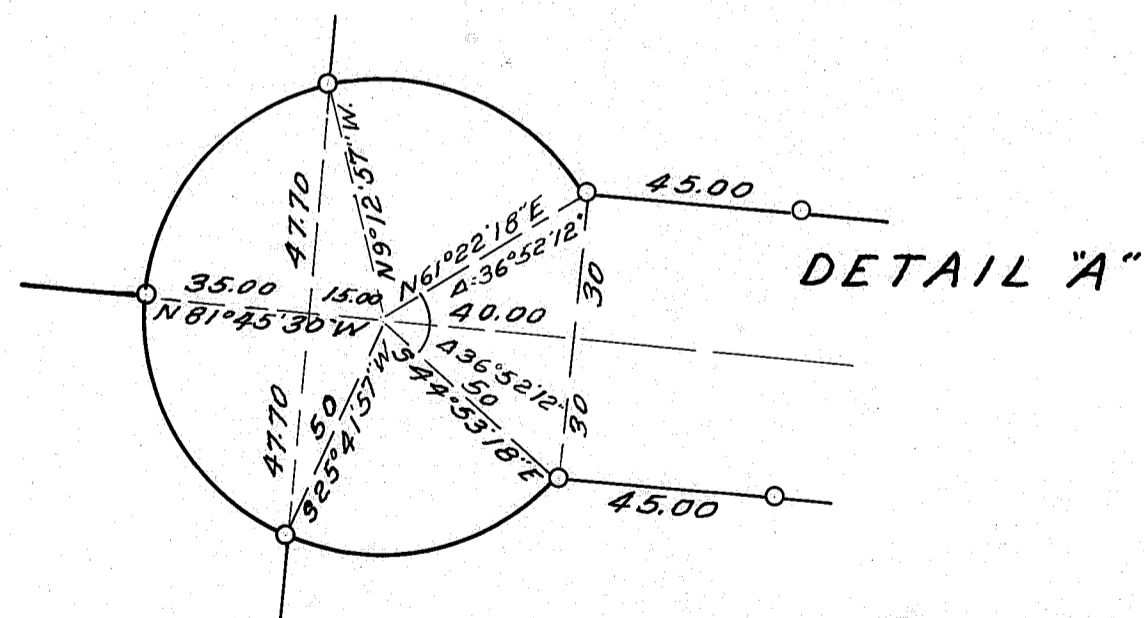


LEGEND:

- corners as noted
 - o-3/4" x 18" Iron pipe
 - ⊕ 5" x 25" Anchor easement
 - ⊙ 1" x 18" Iron pipe
- Basis of bearings is the recorded ϕ of Arlington Road F.A.S. # 1062

CURVE DATA

- "A" $\Delta = 0^\circ 38' 50"$
R: 4234.55
L: 47.88
- "B to J" Incl. $\Delta = 1^\circ 24' 52"$
R: 4234.55
L: 104.54
- "J & K" $\Delta = 1^\circ 24' 52"$
R: 3934.65
L: 97.36



ARLINGTON HEIGHTS ESTATES

POR. N 1/2 SW 1/4 SECTION 29 T26N R10E M.D.M.

PLUMAS COUNTY CALIFORNIA

SCALE 1" = 100'