

Bearings are from Country Club Unit No. 2
Bearings from Solar Observations are 0°25' Left of Bearings Shown

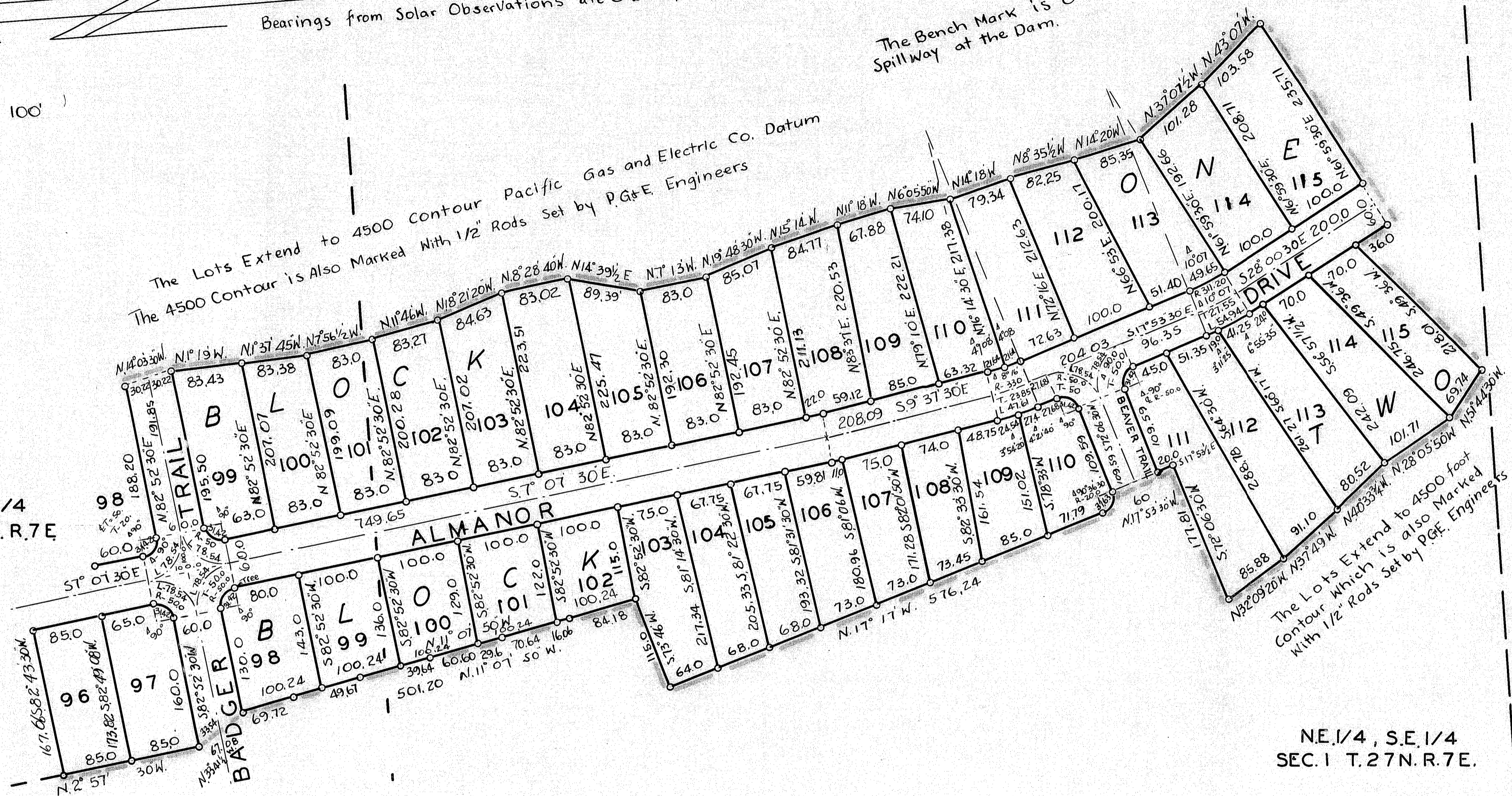
The Bench Mark is on Spill Way at the Dam.

Scale 1" = 100'

The Lots Extend to 4500 Contour Pacific Gas and Electric Co. Datum
The 4500 Contour is Also Marked With 1/2" Rods Set by P.G.&E. Engineers

S.E. 1/4 - NE 1/4
SEC. 1 T. 27 N. R. 7 E

S.E. 1/4, S.E. 1/4
SEC. 1



NE. 1/4, S.E. 1/4
SEC. 1 T. 27 N. R. 7 E.

NOTE: LOTS ADJACENT TO THE 4500' CONTOUR ARE
SUBJECT TO THE AGREEMENT RECORDED IN VOL. 108
PAGE 335 OFFICIAL RECORDS OF PLUMAS COUNTY

LAKE ALMANOR COUNTRY UNIT NO. 4

EDWARD A CLIFFORD OWNER & SUBDIVIDER

O. R. SMITH ENGINEER R. E. 3361

LOREN J. SARGENT L. S. 2322