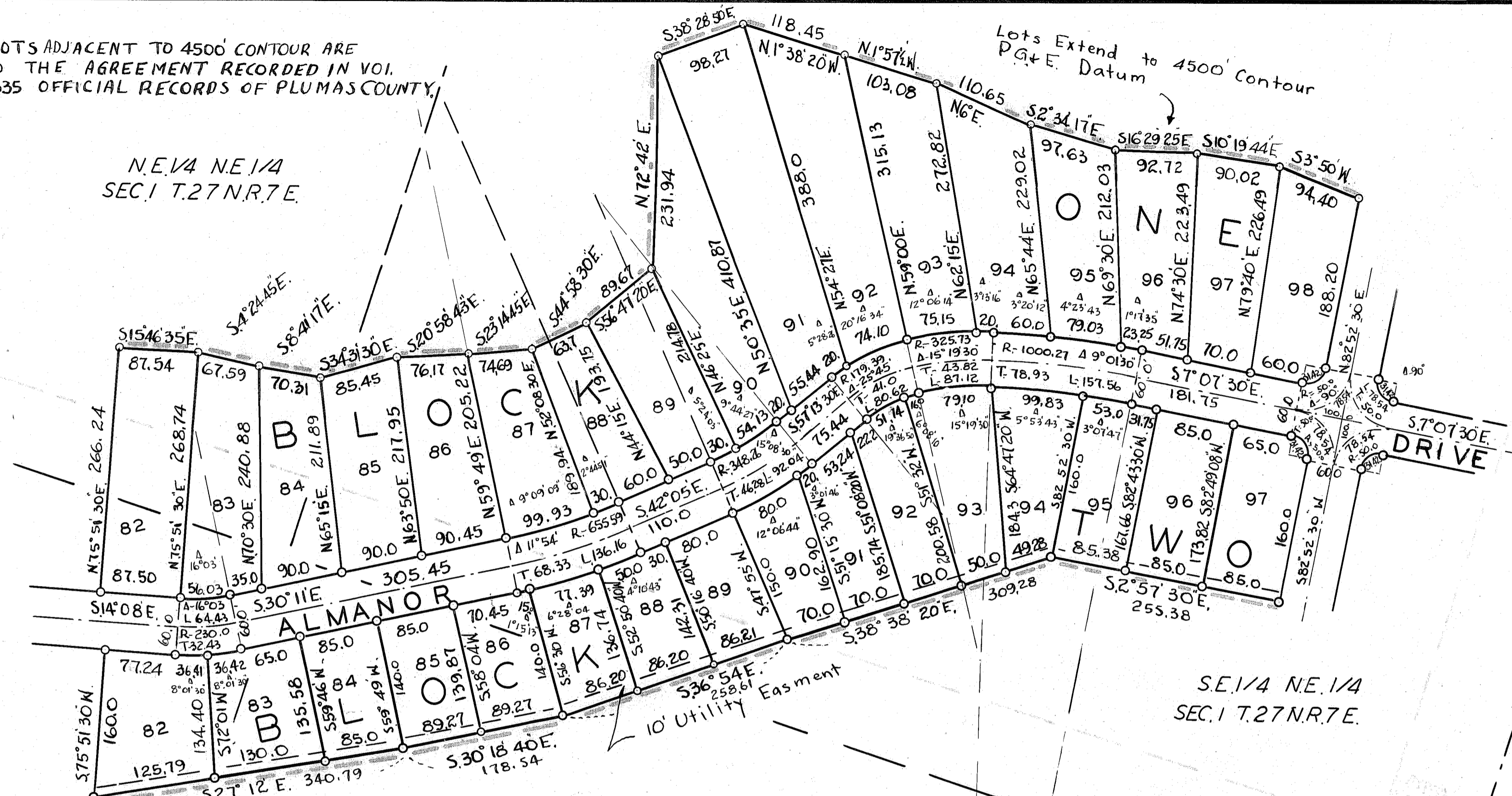


NOTE: LOTS ADJACENT TO 4500' CONTOUR ARE SUBJECT TO THE AGREEMENT RECORDED IN VOL. 108 PAGE 335 OFFICIAL RECORDS OF PLUMAS COUNTY.

N.E. 1/4 NE 1/4 SEC. 1 T. 27 N. R. 7 E.



S.E. 1/4 NE 1/4 SEC. 1 T. 27 N. R. 7 E.

S.W. 1/4 NE 1/4 SEC. 1.

Scale 1" = 100'

Bearings are from Country Club Unit 2  
Bearings from Solar Observation are  
0°25' Left of Bearings Shown

LAKE ALMANOR COUNTRY CLUB

UNIT NO. 4

EDWARD A. CLIFFORD OWNER & SUBDIVIDER

O. R. SMITH ENGINEER

LOREN J. SARGENT SURVEYOR