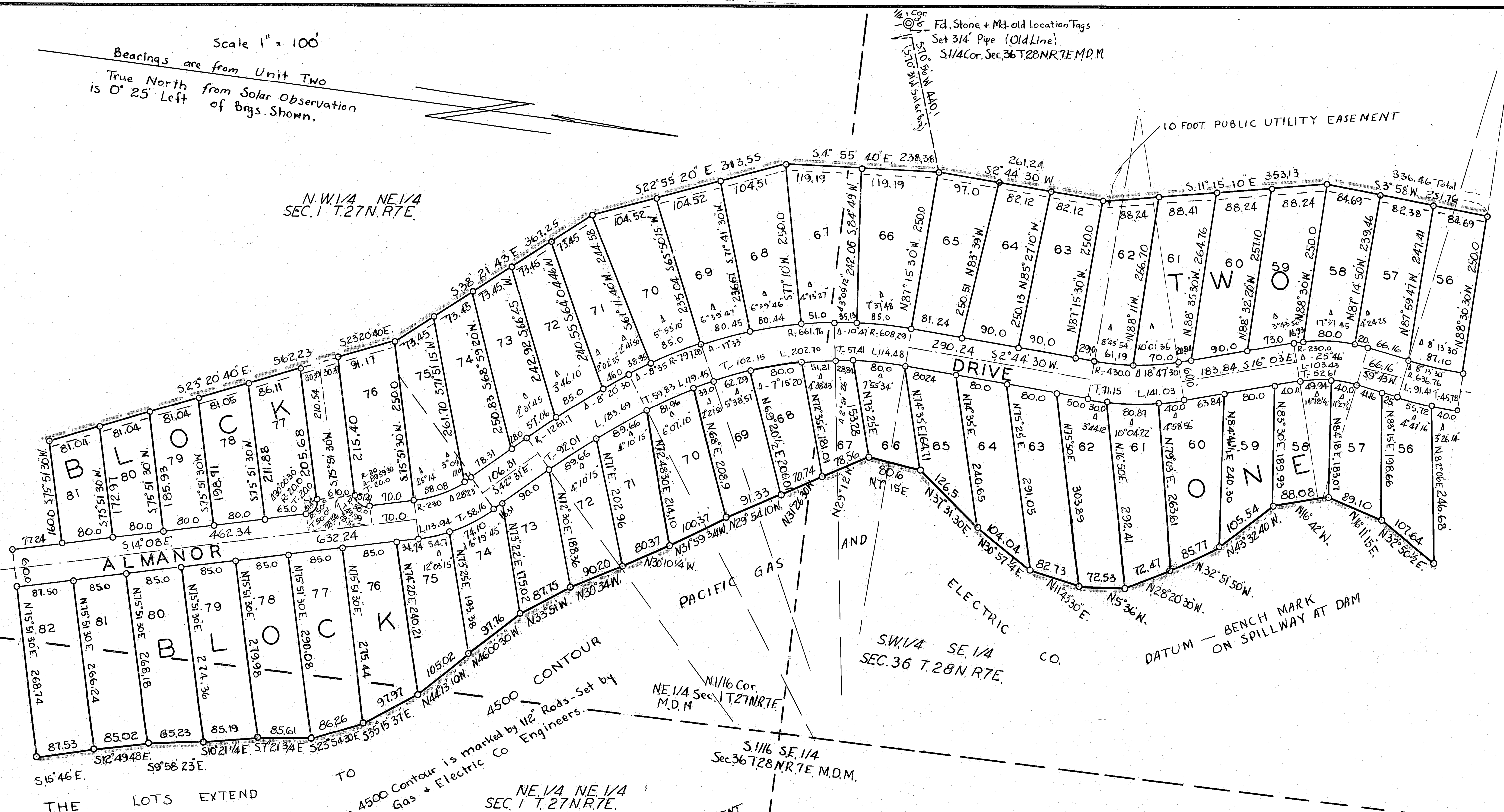


Scale 1" = 100'
Bearings are from Unit Two
True North from Solar Observation
is 0° 25' Left of Brgs. Shown.

N.W. 1/4 NE 1/4
SEC. 1 T. 27 N. R. 7 E.



THE LOTS EXTEND

TO
The 4500 Contour is marked by 1/2 Rods - Set by
Pacific Gas & Electric Co Engineers.

NE 1/4 NE 1/4
SEC. 1 T. 27 N. R. 7 E.

LOTS ADJACENT TO CONTOUR SUBJECT TO AGREEMENT
RECORDED IN VOL. 108 PAGE 335 O.R.

LAKE ALMANOR COUNTRY CLUB UNIT NO. 4

EDWARD A. CLIFFORD - OWNER & SUBDIVIDER

O. R. SMITH ENGINEER

LOREN J. SARGENT SURVEYOR