

27100  
4.0000

NOTES:

THE BASIS OF BEARING IS THE SOUTH LINE OF SECTION 16, T29N, R6E, M.D.B&M.

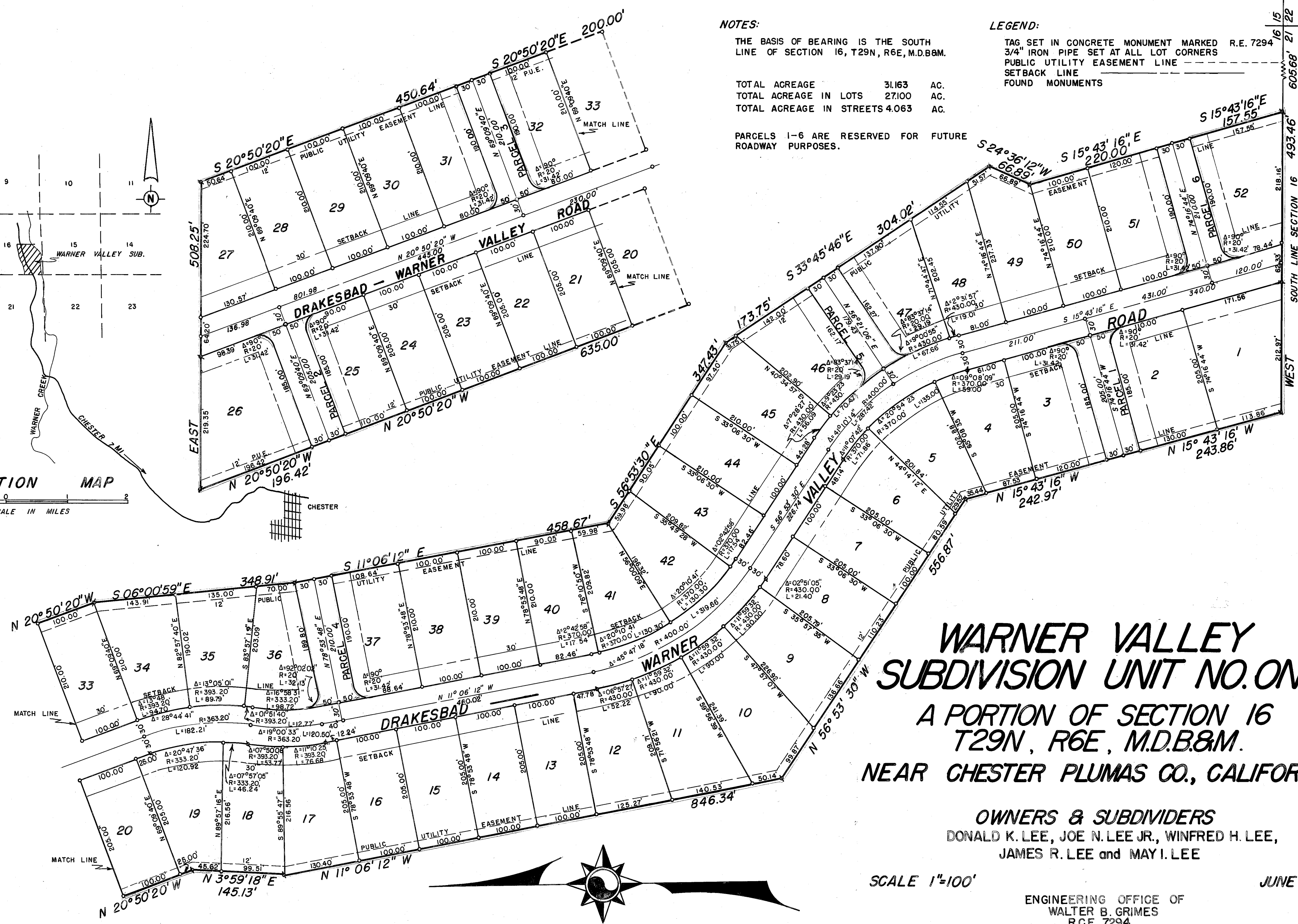
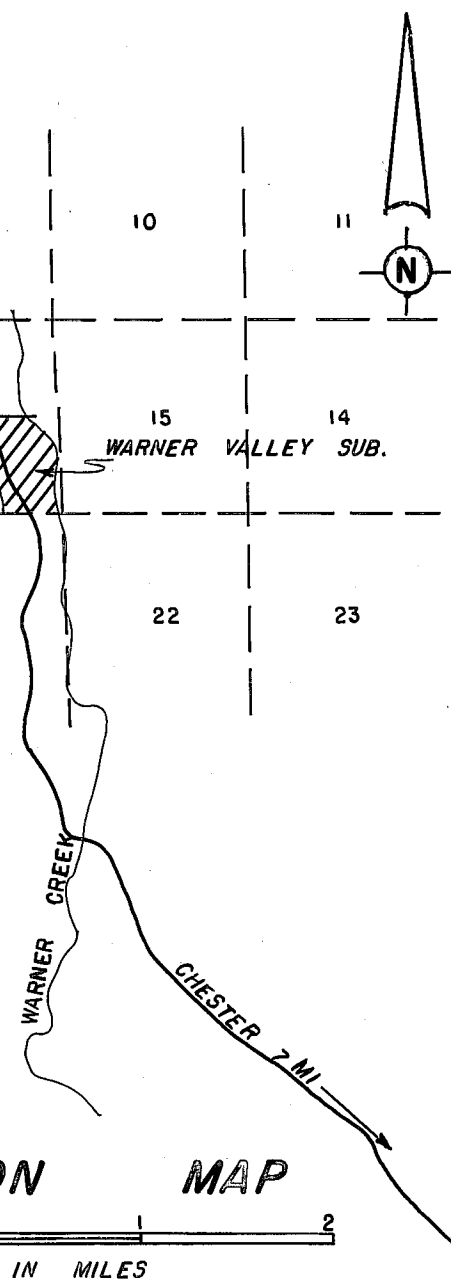
TOTAL ACREAGE 31.163 AC.  
TOTAL ACREAGE IN LOTS 27.100 AC.  
TOTAL ACREAGE IN STREETS 4.063 AC.

PARCELS 1-6 ARE RESERVED FOR FUTURE ROADWAY PURPOSES.

LEGEND:

TAG SET IN CONCRETE MONUMENT MARKED R.E. 7294  
3/4" IRON PIPE SET AT ALL LOT CORNERS  
PUBLIC UTILITY EASEMENT LINE  
SETBACK LINE  
FOUND MONUMENTS

LOCATION MAP  
SCALE IN MILES



# WARNER VALLEY SUBDIVISION UNIT NO. ONE

A PORTION OF SECTION 16  
T29N, R6E, M.D.B&M.  
NEAR CHESTER PLUMAS CO., CALIFORNIA

OWNERS & SUBDIVIDERS  
DONALD K. LEE, JOE N. LEE JR., WINFRED H. LEE,  
JAMES R. LEE and MAY I. LEE

SCALE 1"=100'

JUNE 1962

ENGINEERING OFFICE OF  
WALTER B. GRIMES  
R.C.E. 7294  
CHICO, CALIFORNIA