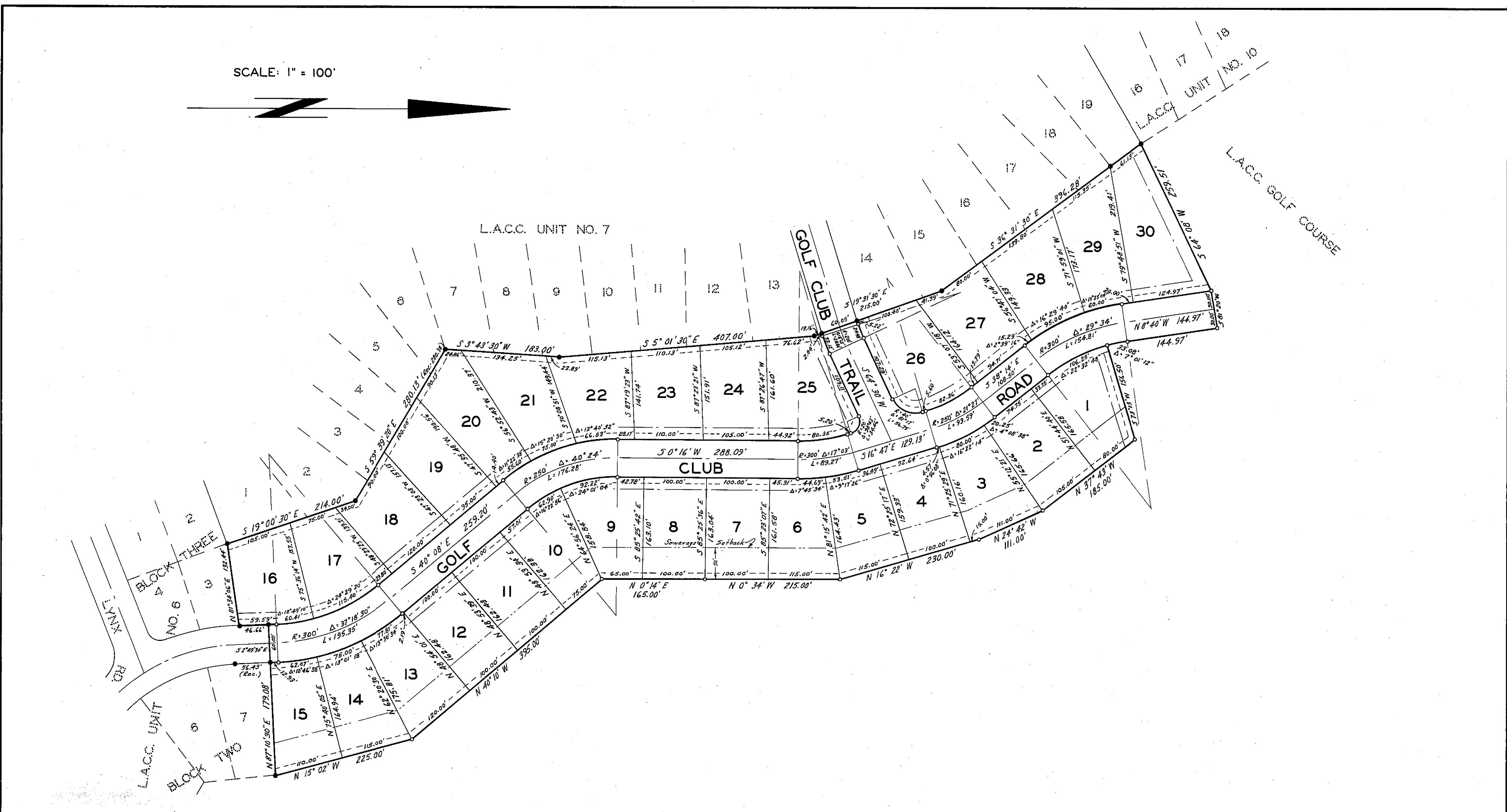
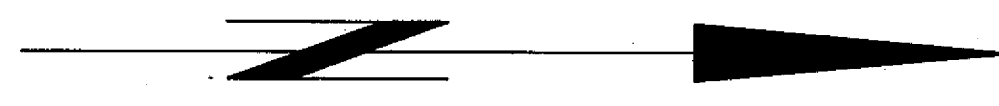


SCALE: 1" = 100'



LEGEND

- FOUND IRON PIPE MONUMENT ON SUBDIVISION BOUNDARIES OF UNITS 6 & 7
- SET 1" IRON PIPE TAGGED "L.S. 3202" FOR ANGLE AND CURVE POINTS
- SET 1/2" IRON PIPE TAGGED "L.S. 3202" FOR ALL LOT CORNERS
- 20' BUILDING SETBACK LINE
- 10' P.U.E. (PUBLIC UTILITIES EASEMENT)

LAKE ALMANOR COUNTRY CLUB UNIT NO. 15

IN SECTION 36, T28N, R7E, MDB & M
PLUMAS COUNTY, CALIFORNIA
SCALE: 1"=100'

OWNER & SUBDIVIDER: EDWARD A. CLIFFORD

VANDENBERG & SIMPSON, ENGINEERS & SURVEYORS
SUSANVILLE, CALIFORNIA

REC. IN BOOK 3 OF MAPS AT PAGE 79-80

SHEET 2 OF 2