

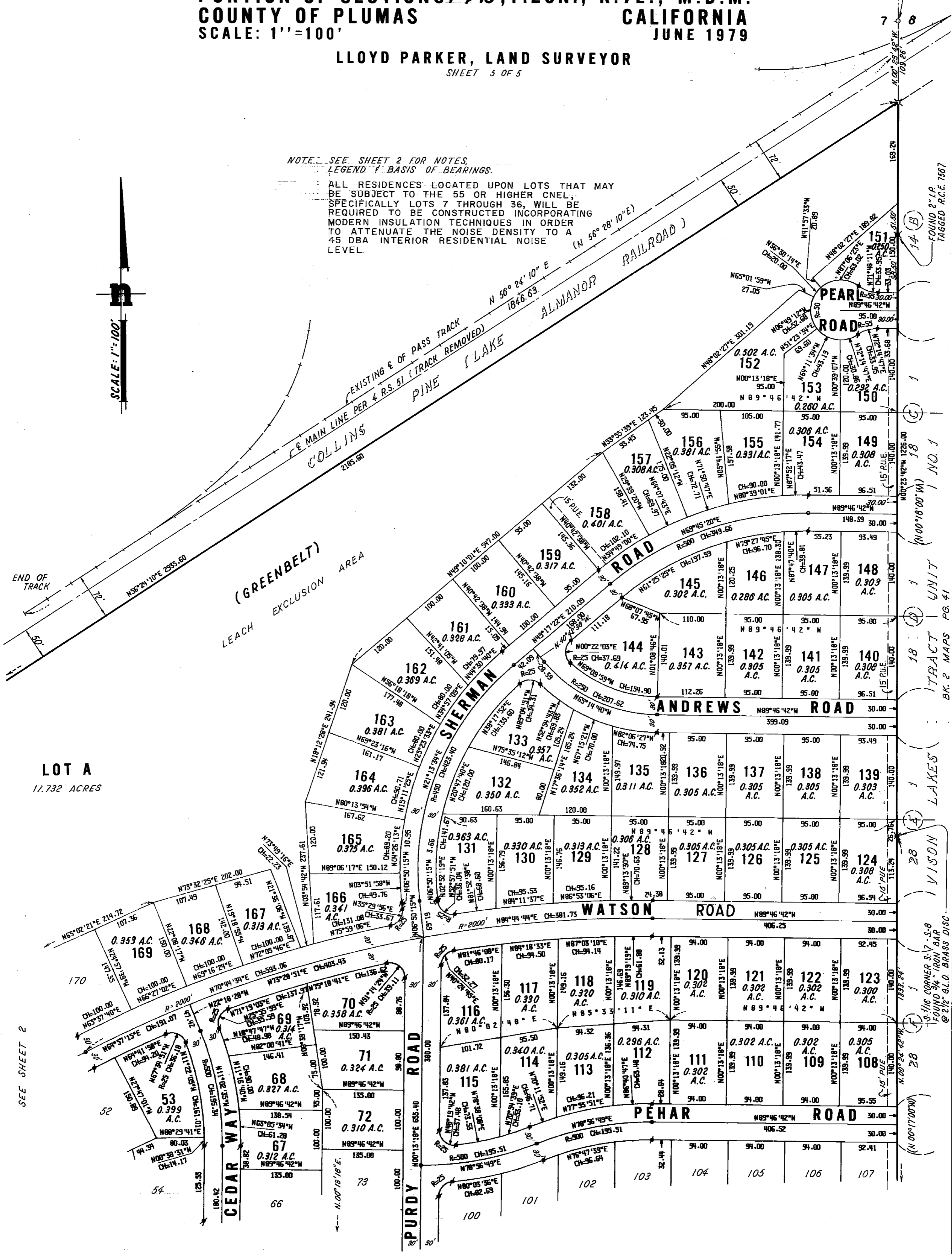
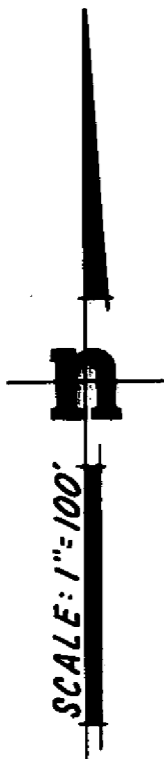
SUBDIVISION MAP OF  
**LAKE ALMADOR FOREST**  
 PORTION OF SECTIONS 7 & 18, T. 28N., R. 7E., M.D.M.  
 COUNTY OF PLUMAS  
 SCALE: 1"=100'

1/4 CORNER  
 COMPUTED POSITION PER  
 BK 2 MAPS, PG. 41 NOTHING  
 FOUND OR SET

LLOYD PARKER, LAND SURVEYOR  
 SHEET 5 OF 5

NOTE: SEE SHEET 2 FOR NOTES,  
 LEGEND & BASIS OF BEARINGS.

ALL RESIDENCES LOCATED UPON LOTS THAT MAY  
 BE SUBJECT TO THE 55 OR HIGHER CNEL,  
 SPECIFICALLY LOTS 7 THROUGH 36, WILL BE  
 REQUIRED TO BE CONSTRUCTED INCORPORATING  
 MODERN INSULATION TECHNIQUES IN ORDER  
 TO ATTENUATE THE NOISE DENSITY TO A  
 45 DBA INTERIOR RESIDENTIAL NOISE  
 LEVEL.



**LOT A**  
 17.732 ACRES

SEE SHEET 2

SEE SHEET 4

4M153

153

14 (B) FOUND 2" I.P. TAGGED P.C.E. 7667  
 18 (C) 18 (D) 18 (E) TRACK UNIT BK. 2 MAPS PG. 41  
 28 (F) LAKES VISON  
 28 (G) 3/16 CORNER S.V.-S.B. FOUND 3/4" IRON BAR @ 2 1/2" G.L.D. BRASS DISC